



APPENDICES MINUTES

Waikanae Community Board Meeting

Tuesday, 1 February 2022

Table of Contents

Appendix 1 Photographs distributed by Wendy Bence 4

Appendix 1 Photographs distributed by Glen Wiggs 10

Photos

From: Wendy Bence

To: Wendy Bence

Date: Mon, 31 Jan 2022, 1:53 PM



IMG_2277.jpg 4.4 MB

IMG_2281.jpg 4.7 MB

Get [Outlook for iOS](#)

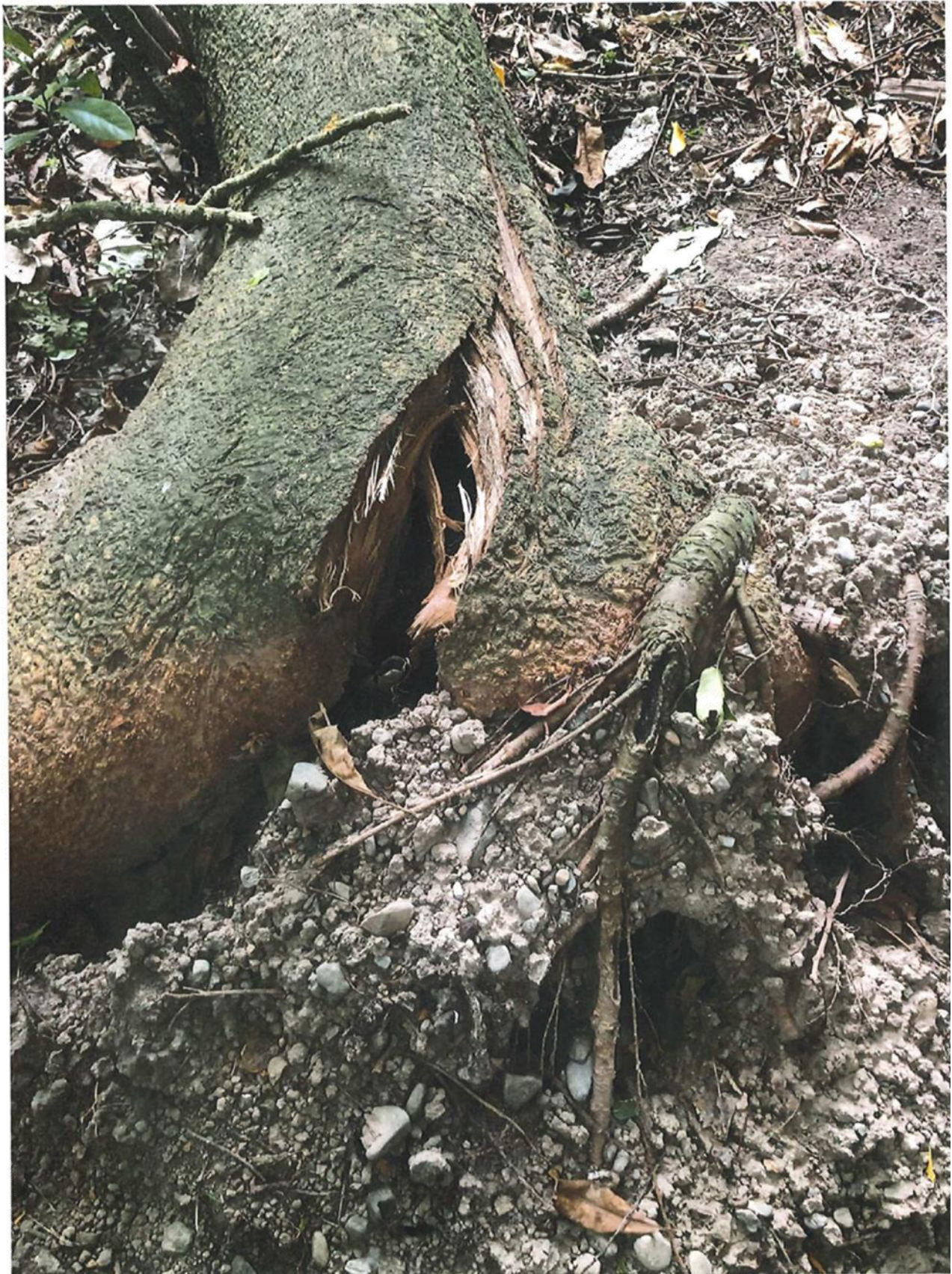




2 / 2



3 / 7



4 / 7





6 / 7

WCB 01/02/22

1

Rangihiroa Domain 2022

The problem of dangerous trees in the Rangihiroa Domain continues in 2022. The 6 pines and 35 gums regularly shed branches. With the current dry grass, the fire risk is increased. The domain is well used, and most users are unaware of the danger. With the 'risk on' policy of the Council it is only a matter of time before someone is injured or killed or there is a major fire which would endanger neighbouring properties and the MenzShed facilities.

The reason given by Council in response to my submission to Long Term Plan for removal of trees was *"This stand of trees is significant in the landscape and provide a habitat for birds."* There was no response on the danger the trees which was the basis of the submission.

Typical fallen branch



Photo taken 20 December

Large broken branch yet to fall. People walk beneath it



Photo taken 20 December

3

Same branch



- Photo taken 31 January

4

Recent fire – Quick thinking by neighbours used domestic hoses to tame fire pending arrival of fire brigade. This is the 4th fire in the Domain over the past 50 years.



Fire reached punga fence of neighbour



Photos taken 31 January

Gum with dead branches – most gums have dead branches

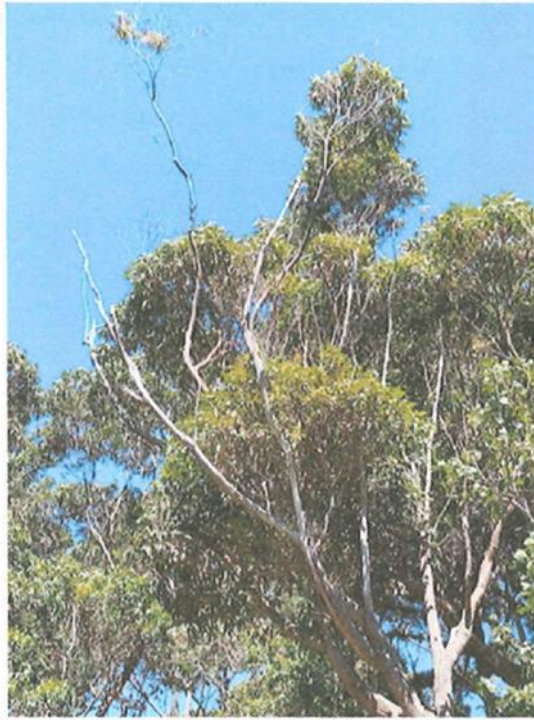


Photo taken 31 January

Gum next to MenzShed with dead branch

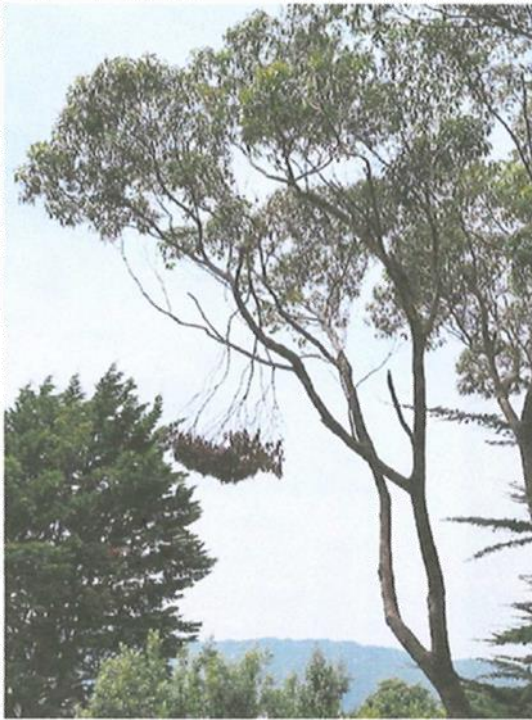


Photo taken 1 February