



RĀRANGI TAKE

AGENDA

Te Komiti Toitūtanga Pāpori | Social Sustainability Committee Meeting

I hereby give notice that a Meeting of the Te Komiti Toitūtanga Pāpori | Social Sustainability Committee will be held on:

Te Rā | Date: Tuesday, 25 March 2025

Te Wā | Time: 9.30am

**Te Wāhi | Location: Council Chamber
Ground Floor, 175 Rimu Road
Paraparaumu**

Brendan Owens
Group Manager Customer and Community

Kāpiti Coast District Council

Notice is hereby given that a meeting of the Te Komiti Toitūtanga Pāpori | Social Sustainability Committee will be held in the Council Chamber, Ground Floor, 175 Rimu Road, Paraparaumu, on Tuesday 25 March 2025, 9.30am.

Te Komiti Toitūtanga Pāpori | Social Sustainability Committee Members

Cr Martin Halliday	Chair
Cr Rob Kofoed	Deputy
Mayor Janet Holborow	Member
Deputy Mayor Lawrence Kirby	Member
Cr Kathy Spiers	Member
Cr Nigel Wilson	Member
Ms Kim Tahiwī	Member
Mr Huriwai Paki	Member
Ātiawa ki Whakarongotai Representative	Member
Mr Guy Burns	Member
Mr Jonny Best	Member
Mrs Jackie Elliott	Member
Ms Sorcha Ruth	Member
Mr Michael Moore	Member

Te Raupapa Take | Order Of Business

1	Nau Mai Welcome	5
2	Karakia a te Kaunihera Council Blessing.....	5
3	Whakapāha Apologies.....	5
4	Te Tauākī o Te Whaitake ki ngā Mea o te Rārangi Take Declarations of Interest Relating to Items on the Agenda	5
5	He Wā Kōrero ki te Marea mō ngā Mea e Hāngai ana ki te Rārangi Take Public Speaking Time for Items Relating to the Agenda	5
6	Ngā Teputeihana Deputations.....	6
6.1	Kāpiti Health Advisory Group	6
6.2	Kāpiti Disability Advisory Group	6
6.3	Kāpiti Coast Older Persons' Council.....	6
6.4	Zeal Youth Trust.....	6
7	Ngā Take a Ngā Mema Members' Business	7
8	He Kōrero Hou Updates.....	8
8.1	Allocation of Social Housing in Kāpiti	8
9	Te Whakaū i ngā Āmiki Confirmation of Minutes	22
9.1	Confirmation of Minutes	22
10	Karakia Whakamutunga Closing Karakia.....	28

1 NAU MAI | WELCOME**2 KARAKIA A TE KAUNIHERA | COUNCIL BLESSING**

I a mātou e whiriwhiri ana i ngā take kei mua i ō mātou aroaro *As we deliberate on the issues before us,*

E pono ana mātou ka kaha tonu ki te whakapau mahara huapai mō ngā hapori e mahi nei mātou. *We trust that we will reflect positively on the communities we serve.*

Me kaha hoki mātou katoa kia whaihua, kia tōtika tā mātou mahi, *Let us all seek to be effective and just,*

Ā, mā te māia, te tiro whakamua me te hihiri *So that with courage, vision and energy,*

Ka taea te arahi i roto i te kotahitanga me te aroha. *We provide positive leadership in a spirit of harmony and compassion.*

3 WHAKAPĀHA | APOLOGIES**4 TE TAUĀKĪ O TE WHAITAKE KI NGĀ MEA O TE RĀRANGI TAKE | DECLARATIONS OF INTEREST RELATING TO ITEMS ON THE AGENDA**

Notification from Elected Members of:

4.1 – any interests that may create a conflict with their role as an elected member relating to the items of business for this meeting, and

4.2 – any interests in items in which they have a direct or indirect pecuniary interest as provided for in the Local Authorities (Members' Interests) Act 1968

5 HE WĀ KŌRERO KI TE MAREA MŌ NGĀ MEA E HĀNGAI ANA KI TE RĀRANGI TAKE | PUBLIC SPEAKING TIME FOR ITEMS RELATING TO THE AGENDA

6 NGĀ TEPUTEIHANA | DEPUTATIONS

6.1 KĀPITI HEALTH ADVISORY GROUP

TE PŪTAKE | PURPOSE

- 1 Diana Ponsford, lead of the Kāpiti Health Advisory Group's transport workstream, will provide an update to the Social Sustainability Committee on the work in this space.

6.2 KĀPITI DISABILITY ADVISORY GROUP

TE PŪTAKE | PURPOSE

- 1 Joanne Dacombe, Chair of the Kāpiti Disability Advisory Group will share her thoughts with the Social Sustainability Committee on the changes being made to strengthen the Disability Advisory Group.

6.3 KĀPITI COAST OLDER PERSONS' COUNCIL

TE PŪTAKE | PURPOSE

- 1 Kevin Burrows, Chair of the Kāpiti Coast Older Persons' Council will share his thoughts with the Social Sustainability Committee on the changes being made to strengthen the Older Persons' Council.

6.4 ZEAL YOUTH TRUST

TE PŪTAKE | PURPOSE

- 1 Britney Jupp, National Manager and Laz Lemanutau, Zeal Kāpiti Project Manager from Zeal Youth Trust will provide an update on the Trust's contract achievements and ideas for the future for the Youth Development Centre.

7 NGĀ TAKE A NGĀ MEMA | MEMBERS' BUSINESS

- (a) Leave of Absence
- (b) Matters of an Urgent Nature (advice to be provided to the Chair prior to the commencement of the meeting)
- (c) Members' Items

8 HE KŌRERO HOU | UPDATES

8.1 ALLOCATION OF SOCIAL HOUSING IN KĀPITI

Kaituhi | Author: **Stephen Cross, Housing Programme Manager**

Kaiwhakamana | Authoriser: **Kris Pervan, Group Manager Strategy & Growth**

TE PŪTAKE | PURPOSE

- 1 This report provides information on the process for allocating social housing in the Kāpiti Coast, and the respective roles of central government housing agencies and the Ministry of Social Development. It also highlights concerns about recent changes to central government settings, which may have an unintended consequence of increasing homelessness in the Kāpiti Coast District.

TAUNAKITANGA | RECOMMENDATIONS

That the Social Sustainability Committee:

- A. **Note** the recent changes to central government roles and settings in relation to social housing provision which may tighten access to social and emergency housing, resulting in a risk of higher homelessness.
- B. **Note** the approach taken in Ōtaki to ensure members of the local community were prioritised for allocation of new Kāinga Ora housing, which we are advocating is now the standard process for allocating social housing in the Kāpiti Coast District.

TŪĀPAPA | BACKGROUND

- 2 As identified in the Housing Needs Assessment undertaken by Council in 2022:
 - 2.1 A striking feature of housing provision in the the Kāpiti Coast district is the low numbers of public housing stock, with a significant number of the existing Kāinga Ora stock dominated by older, larger properties, while the demand is for smaller sized units.
 - 2.2 The majority of the Kāinga Ora stock is not aligned with the household demographics of its current tenancies nor applicants to the Housing Register.
- 3 Following the completion of the Housing Needs Assessment and extensive lobbying by Council and the community there has been an increase in activity by Kāinga Ora and the Ministry of Housing and Urban Development in the district. Of note, Kāinga Ora has recently completed development of 21 new public housing units in Ōtaki, with a new 26 multi-unit development under construction at 112 Main Road South, Paraparaumu. The units which are currently being constructed are expected to be completed in late 2025. The development is comprised of 15, two-bedroom units and 11 three-bedroom homes.
- 4 However, even after the recent increase in activity by Kāinga Ora there are only 250 public housing units in the entire district. There are 11,289 public housing units in the Wellington region, Kāpiti has just 2.4% of public housing provision in the Wellington Region, but comprises 11% of the region's population.
- 5 In late 2022 Kāinga Ora purchased a 4-hectare parcel of land at 59-69 Raumati Road for \$10m and announced an intention to build 100 units on the site. In September 2024 it was reported that the project was one of a number of social housing developments that were "under assessment" with "a focus on best value for money and the areas of greatest social housing need." It has been reported that the Raumati Road development may not progress, and it is possible Kāinga Ora will divest the site.

HE TAKE | ISSUES

The allocation of social housing

- 6 The existing process for allocating Kāinga Ora housing involved a disparate process which involved several parties as follows:
 - 6.1 The Ministry for Social Development (MSD) maintains a list of priority candidates looking for accommodation in the location when social housing becomes available.
 - 6.2 Kāinga Ora uses the list provided by MSD, as well as their own process, to ensure that potential tenants are a match for the development and have support in the community. Important considerations include any accessibility requirements and number of occupants. Refer to appendix 1 for a more detailed overview of the different government agencies and the processes undertaken to allocate social housing.
- 7 In 2024, the community in Ōtaki, and in particular Ngā Hapū o Ōtaki, raised concerns about the allocation of public housing in Ōtaki, and a concern that new units being developed by Kāinga Ora were being allocated to applicants from outside the district, while there was significant existing need in the local community.
- 8 It was identified that local residents were not engaged with MSD or Kāinga Ora because the waiting list was long, and some feedback indicates they didn't believe support was available. In response to the concerns raised, Kāinga Ora and the MSD worked closely with Ngā Hapū o Ōtaki to support members of the Ōtaki community to apply to join the Housing Register, making them eligible to be allocated the new units. This approach was successful in ensuring that community members were allocated the majority of units in the developments recently completed in Ōtaki.
- 9 Council has approached the MSD to ensure that the learning from the successful approach to the allocation of Kāinga Ora housing used in Ōtaki is also used across the district, thus ensuring that local community members will be considered when the units at 112 Main Road South, Paraparaumu are completed and ready for allocation.
- 10 The Ministry has agreed to work in partnership with iwi and social service providers in Paraparaumu to ensure a similar approach to the allocation of public housing in Ōtaki is used elsewhere in the district.
- 11 The Council housing team will liaise with the MSD to support the implementation of the approach.

Changes to the role of Government Agencies

- 12 As noted above, central government has recently reviewed the role of Kāinga Ora. Government has also made changes to the provision of emergency housing by MSD. This includes changes to:
 - 12.1 "Tighten the emergency housing gateway" and moving to a more rules-based eligibility system.
 - 12.2 Require increased information requirements from applicants and clearer consequences for not meeting responsibilities such as a requirement to be in regular contact with MSD.
 - 12.3 Establish a new priority fast-track into public housing for families with children that have been in emergency housing for longer than 12 weeks.
- 13 MSD has acknowledged there is a risk that tightening the emergency housing gateway will result in increased levels of homelessness, rough sleeping and overcrowding. There is also an acknowledgement that there may be a core group of people (predominantly single people with complex needs) who will remain in emergency housing because of a lack of appropriate alternative accommodation options.
- 14 Council's Strategy and Growth Group (housing team) is monitoring the effects of these changes on housing need and demand in the Kāpiti Coast District. We note that our district

has a higher level of expenditure on Emergency Housing Special Needs Grants and fewer long term permanent public housing options than other comparable areas. See appendix 2 "Housing Data".

- 15 The housing team is meeting with MSD to discuss emerging issues and to see if there are alternative options that could be progressed and/or put in place to help meet housing need in the Kāpiti Coast District.

NGĀ KŌWHIRINGA | OPTIONS

- 16 There are no options to be considered within this report.

NGĀ MAHI PANUKU | NEXT STEPS

- 17 The housing team is:

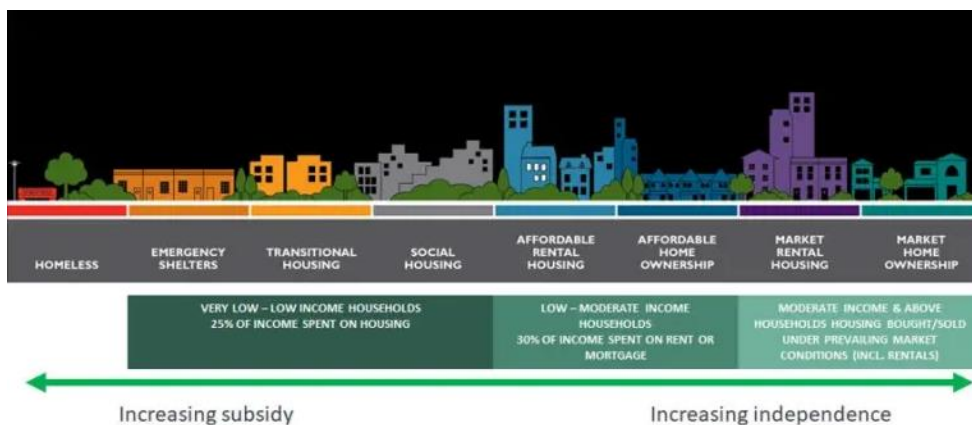
- 17.1 Monitoring the recent changes to the housing system, particularly access to Emergency Housing Special Needs Grants in the district and impact to local residents. The team will continue to provide updates to the Social Sustainability Committee to highlight changes in the provision of housing assistance and the observed effects of changes.
- 17.2 Liaising with MSD to support the implementation of the revised approach for allocating local people to available social housing in Kāpiti Coast, including increasing people listed on the Housing Register and discussing options for meeting emergency or transitional housing need in our district.

NGĀ ĀPITI HANGA | ATTACHMENTS

1. The role central government and the housing continuum [↓](#)
2. Comparative Housing Data [↓](#)




The role of central government and the housing continuum

The housing continuum diagram below shows the range of housing tenure models from emergency housing through to private home ownership and the different level of housing assistance required across the continuum.



Adapted from: Canada Mortgage & Housing Corporation and Community Housing Aotearoa

Central government agencies have roles associated with different parts of the continuum; the respective roles of government agencies are stated in the diagram below.

Kāinga Ora- Homes and Communities	The Ministry of Social Development	The Ministry of Housing and Urban Development
<ol style="list-style-type: none"> 1. Manage and maintain public houses 2. Place people from the Housing Register into their homes 	<ol style="list-style-type: none"> 1. Work with people who need support 2. Assess eligibility and manage the Public Housing Register 3. Calculate income related rents 4. Administers Emergency Housing Grants 	<ol style="list-style-type: none"> 1. Strategy, Policy, funding, monitoring and regulation of housing and urban development 2. Addressing homelessness 3. Monitoring community housing providers
		
<p>Tenancy Services</p> <p>Tenancy Services is part of the Ministry of Business, Innovation and Employment (MBIE)</p>		<ol style="list-style-type: none"> 1. Tenancy Services administers the Residential Tenancies Act 1986 providing services for resolving disputes, including mediation and coordinating the Tenancy Tribunal 2. The agency monitors and enforces compliance with the Residential Tenancies Act, Healthy Homes Guarantee Act, and associated regulations

Emergency Housing – Is Temporary accommodation for individuals and families who have an urgent need for accommodation because they have nowhere else to stay or are unable to remain in their usual place of residence. Eligibility and placements are determined solely by the Ministry of Social Development.

In July 2016, the Emergency Housing Special Needs Grant (“EH SNG”) was introduced. The purpose of the EH SNG is to help individuals and families with the cost of staying in short-term emergency accommodation (motels, hostels, campsites etc) if they are temporarily unable to access MSD’s contracted transitional housing places.

The EH SNG pays for short-term accommodation for up to seven days at a time, with the accommodation being provided by commercial and community providers who are not contracted by MSD to deliver accommodation services. Every applicant for an EH SNG must make reasonable efforts to find longer-term secure accommodation. For most applicants, this includes applying for transitional housing and public housing through the housing register.

The EH SNG payment normally does not need to be paid back, but where the household has contributed to their own housing need, the EH SNG may be made recoverable at 25% of the applicants’ weekly income.

Recently government has agreed to changes to “tighten the emergency housing gateway” moving to a more rules-based eligibility system, with increased information requirements from applicants and clearer consequences for not meeting responsibilities. They also established a new priority fast track into public housing for families with children that have been in emergency housing for longer than 12 weeks.

Government has acknowledged there is a risk that tightening the gateway will result in increased levels of homelessness, rough sleeping and overcrowding. There is an acknowledgement that there may be a core group of people (predominantly single people with complex needs) who will remain in emergency housing because of a lack of appropriate alternative accommodation options.

Transitional Housing – temporary accommodation and support for individuals or families who are in urgent need of housing. It provides warm, dry, short-term housing for people and families who have an urgent need for a place to stay. It is intended that families and individuals stay in transitional housing for an average of around 12 weeks. Families and individuals may also receive a further 12 weeks support once they’ve found a more permanent place to live.

People living in transitional housing pay rent of up to 25% of their income, the rest of the cost are paid by the Ministry of Housing and Urban Development. Transitional Housing is provided by approved social service providers who manage the housing and are responsible for making sure the properties are warm, dry and well maintained. Properties are sourced several ways, including buying and leasing properties from the private market, using service providers’ existing properties and building new properties. There are 19 Transitional Housing spaces contracted for use in Kāpiti district.

Public Housing – is subsidised rental housing receiving Income Related Rent Subsidy administered by the Ministry of Social Development with the tenancies managed by Kāinga Ora or registered Community Housing Providers.

The Social Housing Register. When New Zealanders are in need of public housing, their needs are recorded on the Social Housing Register, which is comprised of a Housing Register and a Transfer Register. The Housing Register is prioritised by need and consists

of applicants who have been assessed as being eligible for public housing. The Transfer Register is made up of people already in public housing, but who have requested and are eligible for a transfer to another property. MSD works with people who need housing and financial support and manages the Housing Register of applicants for public housing.

Accommodation Supplement (AS) is a weekly payment to assist people who are not in public housing, with their rent, board or the cost of owning a home. A person does not have to be receiving a benefit to qualify for AS. More than 250,000 households use the Accommodation Supplement to help pay rent or board in the private market. More than 33,000 homeowners use the Accommodation Supplement to help pay mortgages.

Comparative housing data including Emergency Housing Special Needs Grants, Transitional Housing Space, Number of Public Housing and Housing Register Numbers

Note: where “S” appears, data has been suppressed to ensure privacy is maintained

Kapiti Coast District Council	Quarter ending	Total Amount SNGEH Granted	Number of SNGEH Grants	Number of Households	Transitional Housing Spaces	Number of Public Houses	No Housing Register
No Additional Public Houses	Mar-22	\$ 619,667	216	39	20	235	216
14	Jun-22	\$ 610,568	207	39	20	232	195
	Sep-22	\$ 591,563	204	30	19	235	180
	Dec-22	\$ 470,115	174	30	20	233	165
	Mar-23	\$ 459,880	171	33	20	235	168
	Jun-23	\$ 632,764	225	39	20	233	171
	Sep-23	\$ 739,471	225	39	21	229	177
	Dec-23	\$ 899,279	252	42	20	228	168
	Mar-24	\$ 736,234	207	36	20	234	171
	Jun-24	\$ 931,387	246	39	20	248	158
	Sep-24	\$ 837,162	249	33	19	247	151
	Dec-24	\$ 681,729	189	27	19	249	148

Masterton District Council	Quarter ending	Total Amount SNGEH Granted	Number of SNGEH Grants	Number of Households	Transitional Housing Spaces	Number of Public Houses	No Housing Register
No Additional Public Houses	Mar-22	\$ 455,286	201	27	26	212	159
95	Jun-22	\$ 523,475	234	27	35	217	156
	Sep-22	\$ 522,195	231	21	35	240	138
	Dec-22	\$ 474,520	210	21	34	244	132
	Mar-23	\$ 253,048	129	18	36	253	123
	Jun-23	\$ 273,103	111	18	36	275	141
	Sep-23	\$ 286,766	129	21	39	278	141
	Dec-23	\$ 292,795	117	12	39	282	150
	Mar-24	\$ 208,638	105	9	35	280	150
	Jun-24	\$ 305,665	162	18	46	295	123
	Sep-24	\$ 201,375	99	5	46	292	133
	Dec-24	\$ 115,360	60	6	46	307	146

Horowhenua District Council	Quarter ending	Total Amount SNGEH Granted	Number of SNGEH Grants	Number of Households	Transitional Housing Spaces	Number of Public Houses	No Housing Register
	Mar-22	\$ 511,668	222	33	S	187	234
No Additional Public Houses	Jun-22	\$ 463,334	192	21	S	186	237
86	Sep-22	\$ 316,256	141	18	S	189	195
	Dec-22	\$ 168,125	87	S	S	189	186
	Mar-23	\$ 110,732	66	9	S	189	180
	Jun-23	\$ 104,880	60	9	S	190	186
	Sep-23	\$ 132,749	63	6	S	190	186
	Dec-23	\$ 93,345	45	9	S	195	174
	Mar-24	\$ 101,920	54	9	S	221	180
	Jun-24	\$ 105,415	57	9	S	244	174
	Sep-24	\$ 95,851	57	S	S	248	184
	Dec-24	\$ 19,475	15	S	S	273	178

Upper Hutt City Council	Quarter ending	Total Amount SNGEH Granted	Number of SNGEH Grants	Number of Households	Transitional Housing Spaces	Number of Public Houses	No Housing Register
	Mar-22	\$ 936,542	234	48	128	428	222
No Additional Public Houses	Jun-22	\$ 956,239	225	39	129	433	228
70	Sep-22	\$ 933,640	216	33	127	436	204
	Dec-22	\$ 921,886	204	33	127	437	192
	Mar-23	\$ 760,280	168	33	128	440	201
	Jun-23	\$ 726,024	153	33	128	444	204
	Sep-23	\$ 645,317	153	30	133	443	195
	Dec-23	\$ 798,417	186	30	129	452	198
	Mar-24	\$ 673,922	159	27	130	451	201
	Jun-24	\$ 509,079	129	24	128	478	177
	Sep-24	\$ 484,986	120	15	127	496	180
	Dec-24	\$ 287,753	69	S	127	498	175

Timaru District Council	Quarter ending	Total Amount SNGEH Granted	Number of SNGEH Grants	Number of Households	Transitional Housing Spaces	Number of Public Houses	No Housing Register
	Mar-22	\$ 196,564	180	15	S	418	114
No Additional Public Houses	Jun-22	\$ 135,096	117	6	S	418	105
8	Sep-22	\$ 91,392	75	6	S	418	93
	Dec-22	\$ 51,694	42	S	S	418	96
	Mar-23	\$ 61,252	57	S	S	418	105
	Jun-23	\$ 93,673	87	9	S	418	129
	Sep-23	\$ 93,446	81	12	S	418	129
	Dec-23	\$ 138,374	102	9	S	417	129
	Mar-24	\$ 137,825	117	9	S	417	141
	Jun-24	\$ 144,580	117	9	S	425	123
	Sep-24	\$ 92,010	60	S	S	425	108
	Dec-24	\$ 39,999	24	S	S	426	107

Invercargill City Council	Quarter ending	Total Amount SNGEH Granted	Number of SNGEH Grants	Number of Households	Transitional Housing Spaces	Number of Public Houses	No Housing Register
	Mar-22	\$ 110,600	90	9	31	363	186
No Additional Public Houses	Jun-22	\$ 146,108	102	S	46	371	183
75	Sep-22	\$ 74,274	54	S	53	374	177
	Dec-22	\$ 140,085	78	9	56	380	195
	Mar-23	\$ 108,715	66	6	56	383	201
	Jun-23	\$ 97,575	57	6	64	383	219
	Sep-23	\$ 134,015	78	9	62	397	222
	Dec-23	\$ 135,355	81	6	61	396	240
	Mar-24	\$ 159,084	81	6	58	406	240
	Jun-24	\$ 132,060	90	S	57	432	201
	Sep-24	\$ 70,528	45	S	61	435	203
	Dec-24	\$ 26,045	24	0	60	438	187

Taupo District Council	Quarter ending	Total Amount SNGEH Granted	Number of SNGEH Grants	Number of Households	Transitional Housing Spaces	Number of Public Houses	No Housing Register
	Mar-22	\$ 1,524,924	636	105	S	174	228
No Additional Public Houses	Jun-22	\$ 1,373,537	552	87	S	174	249
56	Sep-22	\$ 1,279,433	543	75	S	175	219
	Dec-22	\$ 1,034,670	450	75	S	175	204
	Mar-23	\$ 891,771	357	75	S	172	210
	Jun-23	\$ 865,819	384	57	9	177	207
	Sep-23	\$ 556,680	219	24	29	176	207
	Dec-23	\$ 333,872	105	15	29	185	216
	Mar-24	\$ 222,288	72	9	28	195	213
	Jun-24	\$ 46,036	21	0	31	216	198
N/A	Sep-24				33	219	186
	Dec-24	\$ 5,770	S	0	36	230	189

Tasman District Council	Quarter ending	Total Amount SNGEH Granted	Number of SNGEH Grants	Number of Households	Transitional Housing Spaces	Number of Public Houses	No Housing Register
	Mar-22	\$ 59,325	42	S	12	168	150
No Additional Public Houses	Jun-22	\$ 74,342	51	S	12	168	147
56	Sep-22	\$ 74,254	57	S	12	168	144
	Dec-22	\$ 39,976	39	S	12	168	147
	Mar-23	\$ 56,150	36	9	12	174	141
	Jun-23	\$ 68,576	48	9	12	175	141
	Sep-23	\$ 104,898	81	6	12	198	147
	Dec-23	\$ 77,261	48	S	12	200	150
	Mar-24	\$ 56,050	30	S	12	210	153
	Jun-24	\$ 24,309	21	0	12	218	147
	Sep-24	\$ 14,490	12	0	12	224	154
	Dec-24	\$ 2,485	S	0	12	224	153

9 TE WHAKAŪ I NGĀ ĀMIKI | CONFIRMATION OF MINUTES

9.1 CONFIRMATION OF MINUTES

Author: Jessica Mackman, Senior Advisor Governance

Authoriser: Brendan Owens, Group Manager Customer and Community

TAUNAKITANGA | RECOMMENDATIONS

That the minutes of the Social Sustainability Committee meeting of 11 February 2025 be accepted as a true and correct record.

NGĀ ĀPITIHINGA | ATTACHMENTS

1. Minutes of Social Sustainability Committee Meeting of 11 February 2025 [↓](#)

SOCIAL SUSTAINABILITY COMMITTEE MEETING MINUTES

11 FEBRUARY 2025

**MINUTES OF THE KĀPITI COAST DISTRICT COUNCIL
SOCIAL SUSTAINABILITY COMMITTEE MEETING
HELD IN THE COUNCIL CHAMBER, GROUND FLOOR, 175 RIMU ROAD, PARAPARAUMU
ON TUESDAY, 11 FEBRUARY 2025 AT 9.31AM**

PRESENT: Cr Martin Halliday (Chair), Cr Rob Kofoed, Cr Kathy Spiers, Deputy Mayor Lawrence Kirby, Ms Kim Tahiwī, Mr Guy Burns, Mr Jonny Best, Mrs Jackie Elliott, Ms Sorcha Ruth, Mr Michael Moore
Via Zoom: Mr Huriwai Paki

IN ATTENDANCE: Ms Morag Taimalietane, Ms Kris Pervan, Ms Oriwia Mason, Ms Anna Smith, Ms Kate Coutts, Ms Jessica Mackman, Mr Jason Holland, Mr Aabhas Moudgil, Ms Monique Engelen, Ms Gina Anderson-Lister
Via Zoom: Cr Sophie Handford

WHAKAPĀHA | APOLOGIES: Mayor Janet Holborow

LEAVE OF ABSENCE: There were none.

1 NAU MAI | WELCOME

The Chair, Cr Martin Halliday, welcomed everyone to the first Social Sustainability Committee meeting of the year.

Cr Nigel Wilson joined the meeting at 9.32am.

2 KARAKIA A TE KAUNIHERA | COUNCIL BLESSING

At the invitation of the Chair, Jonny Best read the Council blessing.

3 WHAKAPĀHA | APOLOGIES

APOLOGY

COMMITTEE RESOLUTION SSC2025/1

Moved: Cr Rob Kofoed
Seconder: Cr Kathy Spiers

That the apology received from Mayor Janet Holborow be accepted.

CARRIED

Morag Taimalietane, Principal Advisor Customer and Community, noted that due to the function of the Social Sustainability Committee, some of the matters raised during the meeting may be sensitive to some members or viewers.

SOCIAL SUSTAINABILITY COMMITTEE MEETING MINUTES

11 FEBRUARY 2025

4 TE TAUĀKĪ O TE WHAITAKE KI NGĀ MEA O TE RĀRANGI TAKE | DECLARATIONS OF INTEREST RELATING TO ITEMS ON THE AGENDA

There were no declarations of interest relating to items on the agenda.

5 HE WĀ KŌRERO KI TE MAREA MŌ NGĀ MEA E HĀNGAI ANA KI TE RĀRANGI TAKE | PUBLIC SPEAKING TIME FOR ITEMS RELATING TO THE AGENDA

There were no members of the public present who wished to speak.

6 NGĀ TEPUTEIHANA | DEPUTATIONS

6.1 KĀPITI HEALTH ADVISORY GROUP

Ian Powell of the Kāpiti Health Advisory Group provided an overview of the case for the expansion of health services in the district and spoke to the presentation appended at Appendix 1 to detail progress and next steps.

Mr Powell and Ms Kris Pervan, Group Manager Strategy & Growth, answered members' questions.

Don Hunn, Ron Tustin and Sandra Daly of the Kāpiti Health Advisory Group spoke to the document appended at Appendix 2 to provide an update on the work of the Population Health Working Group.

Mr Hunn, Mr Tustin and Ms Kris Pervan answered members' questions.

Michael Moore left the meeting at 9.43am and returned to the meeting at 9.43am.

Sorcha Ruth left the meeting at 9.43am and returned to the meeting at 9.43am.

Huriwai Paki left the meeting at 9.58am and returned to the meeting via Zoom at 10.03am.

Huriwai Paki left the meeting at 10.19am and returned to the meeting via Zoom at 10.20am.

Michael Moore left the meeting at 10.36am and returned at 10.37am.

Appendices

- 1 Compelling Case & Polyclinic Update (Ian Powell - Kāpiti Health Advisory Group)
- 2 Population Health Working Group (Don Hunn - Kāpiti Health Advisory Group)

The Chair noted that Item 7 *Members' Business* would be moved to later point in the meeting.

Sorcha Ruth left the meeting at 10.41am.

8 HE KŌRERO HOU | UPDATES

8.1 EXPLORING THE URBAN DESIGN PANEL CONCEPT

Ms Kris Pervan, Group Manager Strategy & Growth introduced the item and acknowledged the involvement of Cr Rob Kofoed.

Jason Holland, Manager District Planning and Aabhas Moudgil, Intermediate Policy Planner, took the report as read and together with Ms Pervan answered members' questions.

Sorcha Ruth returned to the meeting at 10.43am.

Jackie Elliott left the meeting at 10.43am and returned to the meeting at 10.47am.

SOCIAL SUSTAINABILITY COMMITTEE MEETING MINUTES

11 FEBRUARY 2025

Guy Burns left the meeting at 10.50am and returned to the meeting at 10.54am.

The meeting adjourned at 11.24am and reconvened at 11.41am.

Guy Burns did not return to the meeting following the adjournment.

Sorcha Ruth returned to the meeting at 11.43am.

COMMITTEE RESOLUTION SSC2025/2

Moved: Cr Rob Kofoed

Seconder: Cr Nigel Wilson

That the Social Sustainability Committee:

- A. Note the Urban Design Panel concept, which has a national protocol set by the Ministry for the Environment, which is already in use by several councils in New Zealand to support achieving good urban design outcomes.
- B. Endorse progressing work to establish an Urban Design Panel for the Kāpiti Coast district.
- C. Note that following this Committee's endorsement, approval will be sought from the Strategy, Operations and Finance Committee in April 2025 to progress next steps.

CARRIED

8.2 PROGRESS UPDATE ON MATTERS RAISED

Morag Taimalietane, Principal Advisor Customer and Community, introduced the item, took the report as read and noted that following the deputation from the Kāpiti Health Advisory Group at this meeting, a further matter regarding submissions would be added.

Members' discussed the matters raised.

9 TE WHAKAŪ I NGĀ ĀMIKI | CONFIRMATION OF MINUTES**9.1 CONFIRMATION OF MINUTES****COMMITTEE RESOLUTION SSC2025/3**

Moved: Deputy Mayor Lawrence Kirby

Seconder: Cr Nigel Wilson

That the minutes of the Social Sustainability Committee meeting of 5 November 2024 be accepted as a true and correct record.

CARRIED

Item 7 *Members' Business* had been moved from an earlier point in the meeting

7 NGĀ TAKE A NGĀ MEMA | MEMBERS' BUSINESS

- (a) There were no requests for a leave of absence.
- (b) There were no matters of an urgent nature notified to the Chair prior to the commencement of the meeting.

SOCIAL SUSTAINABILITY COMMITTEE MEETING MINUTES

11 FEBRUARY 2025

10 TE WHAKAŪNGA O NGĀ ĀMIKI KĀORE E WĀTEA KI TE MAREA | CONFIRMATION OF PUBLIC EXCLUDED MINUTES

11 PURONGO KĀORE E WĀTEA KI TE MAREA | PUBLIC EXCLUDED REPORTS

RESOLUTION TO EXCLUDE THE PUBLIC

COMMITTEE RESOLUTION SSC2025/4

Moved: Mrs Jackie Elliott
 Seconder: Deputy Mayor Lawrence Kirby

That, pursuant to Section 48 of the Local Government Official Information and Meetings Act 1987, the public now be excluded from the meeting for the reasons given below, while the following matters are considered.

The general subject matter of each matter to be considered while the public is excluded, the reason for passing this resolution in relation to each matter, and the specific grounds under section 48(1) of the Local Government Official Information and Meetings Act 1987 for the passing of this resolution are as follows:

General subject of each matter to be considered	Reason for passing this resolution in relation to each matter	Ground(s) under section 48 for the passing of this resolution
10.1 - Confirmation of Minutes	Section 7(2)(b)(ii) - the withholding of the information is necessary to protect information where the making available of the information would be likely unreasonably to prejudice the commercial position of the person who supplied or who is the subject of the information	Section 48(1)(a)(i) - the public conduct of the relevant part of the proceedings of the meeting would be likely to result in the disclosure of information for which good reason for withholding would exist under section 6 or section 7

CARRIED

The Te Komiti Toitūtanga Pāpori | Social Sustainability Committee meeting went into public excluded session at 12.01pm.

MOVE OUT OF PUBLIC EXCLUDE BUSINESS

COMMITTEE RESOLUTION SSC2025/6

Moved: Cr Nigel Wilson
 Seconder: Mrs Jackie Elliott

That the Social Sustainability Committee meeting moves out of public excluded business.

CARRIED

The Te Komiti Toitūtanga Pāpori | Social Sustainability Committee came out of public excluded session at 12.02pm.

SOCIAL SUSTAINABILITY COMMITTEE MEETING MINUTES

11 FEBRUARY 2025

12 KARAKIA WHAKAMUTUNGA | CLOSING KARAKIA

The Chair, Cr Martin Halliday closed the meeting with karakia.

The Te Komiti Toitūtanga Pāpori | Social Sustainability Committee meeting closed at 12.03pm.

.....
HEAMANA | CHAIRPERSON

Unconfirmed

10 KARAKIA WHAKAMUTUNGA | CLOSING KARAKIA

Kia tau ngā manaakitanga ki runga i a tātou katoa,	<i>May blessings be upon us all,</i>
Kia hua ai te mākihikihi, e kī ana	<i>And our business be successful.</i>
Kia toi te kupu	<i>So that our words endure,</i>
Kia toi te reo	<i>And our language endures,</i>
Kia toi te wairua	<i>May the spirit be strong,</i>
Kia tau te mauri	<i>May mauri be settled and in balance,</i>
Ki roto i a mātou mahi katoa i tēnei rā	<i>Among the activities we will do today</i>
Haumi e! Hui e! Taiki e!	<i>Join, gather, and unite! Forward together!</i>