



RĀRANGI TAKE AGENDA

Te Komiti Āhuarangi me te Taiao | Climate and Environment Committee Meeting

I hereby give notice that a Meeting of the Te Komiti Āhuarangi me te Taiao | Climate and Environment Committee will be held on:

Te Rā | Date: Thursday, 7 November 2024

Te Wā | Time: 9.30am

**Te Wāhi | Location: Council Chamber
Ground Floor, 175 Rimu Road
Paraparaumu**

**Rach Wells
Group Manager People and Capability**

Kāpiti Coast District Council

Notice is hereby given that a meeting of the Te Komiti Āhuarangi me te Taiao | Climate and Environment Committee will be held in the Council Chamber, Ground Floor, 175 Rimu Road, Paraparaumu, on Thursday 7 November 2024, 9.30am.

Te Komiti Āhuarangi me te Taiao | Climate and Environment Committee Members

Cr Jocelyn Prvanov	Chair
Cr Sophie Handford	Deputy
Mayor Janet Holborow	Member
Cr Glen Cooper	Member
Cr Liz Koh	Member
Cr Shelly Warwick	Member
Mr Huriwai Paki	Member
Ātiawa ki Whakarongotai Representative	Member
Ms Kim Tahiwī	Member
Mr Christian Judge	Member
Mr Michael Moore	Member
Mr Glen Olsen	Member
Mr Tim Sutton	Member
Mr Simon Black	Member

Te Raupapa Take | Order Of Business

1	Nau Mai Welcome	5
2	Karakia a te Kaunihera Council Blessing	5
3	Whakapāha Apologies	5
4	Te Tauākī o Te Whaitake ki ngā Mea o te Rārangi Take Declarations of Interest Relating to Items on the Agenda	5
5	He Wā Kōrero ki te Marea mō ngā Mea e Hāngai ana ki te Rārangi Take Public Speaking Time for Items Relating to the Agenda	5
6	Ngā Teputeihana Deputations	5
	Nil	
7	Ngā Take a Ngā Mema Members' Business	5
8	He Kōrero Hou Updates	6
8.1	Update on Waikanae Ki Uta Ki Tai	6
8.2	Waste Updates: Litter Intelligence & the Otaihanga Zero Waste Hub.....	10
8.3	Estimated GHG emissions from staff commuting and working from home.....	27
8.4	Sustainable September Programme Report	39
8.5	2025 Kāpiti Climate Change Education & Outreach Overview.....	40
8.6	2023 Climate Action Grants: Impact and Accountability Reporting	42
8.7	Update on the Kāpiti Coast Trails Trust	47
9	Te Whakaū i ngā Āmiki Confirmation of Minutes	58
9.1	Confirmation of Minutes	58
10	Karakia Whakamutunga Closing Karakia	63

1 NAU MAI | WELCOME**2 KARAKIA A TE KAUNIHERA | COUNCIL BLESSING**

I a mātou e whiriwhiri ana i ngā take kei mua i ō mātou aroaro *As we deliberate on the issues before us,*

E pono ana mātou ka kaha tonu ki te whakapau mahara huapai mō ngā hapori e mahi nei mātou. *We trust that we will reflect positively on the communities we serve.*

Me kaha hoki mātou katoa kia whaihua, kia tōtika tā mātou mahi, *Let us all seek to be effective and just,*

Ā, mā te māia, te tiro whakamua me te hihiri *So that with courage, vision and energy,*

Ka taea te arahi i roto i te kotahitanga me te aroha. *We provide positive leadership in a spirit of harmony and compassion.*

3 WHAKAPĀHA | APOLOGIES**4 TE TAUĀKĪ O TE WHAITAKE KI NGĀ MEA O TE RĀRANGI TAKE | DECLARATIONS OF INTEREST RELATING TO ITEMS ON THE AGENDA**

Notification from Elected Members of:

4.1 – any interests that may create a conflict with their role as an elected member relating to the items of business for this meeting, and

4.2 – any interests in items in which they have a direct or indirect pecuniary interest as provided for in the Local Authorities (Members' Interests) Act 1968

5 HE WĀ KŌRERO KI TE MAREA MŌ NGĀ MEA E HĀNGAI ANA KI TE RĀRANGI TAKE | PUBLIC SPEAKING TIME FOR ITEMS RELATING TO THE AGENDA**6 NGĀ TEPUTEIHANA | DEPUTATIONS**

Nil

7 NGĀ TAKE A NGĀ MEMA | MEMBERS' BUSINESS

(a) Leave of Absence

(b) Matters of an Urgent Nature (advice to be provided to the Chair prior to the commencement of the meeting)

8 HE KŌRERO HOU | UPDATES

8.1 UPDATE ON WAIKANAE KI UTA KI TAI

Kaituhi | Author: **Andy McKay, Team Leader, Environment & Ecological Services**

Kaiwhakamana | Authoriser: **Brendan Owens, Group Manager Customer and Community**

TE PŪTAKE | PURPOSE

- 1 This brief report is to update the Climate and Environment Committee on Waikanae Ki Uta Ki Tai (WKUKT).

TAUNAKITANGA | RECOMMENDATIONS

- A. That the Climate and Environment Committee note the update provided.

TŪĀPAPA | BACKGROUND

- 2 Waikanae Ki Uta Ki Tai was established in 2019 and is a unique Treaty house partnership to identify common values for the Waikanae Awa. The project works in a “Treaty House Partnership” with Ātiawa ki Whakarongotai as the ‘Iwi house’ and with Department of Conservation (DOC), Greater Wellington Regional Council (GWRC) and Kāpiti Coast District Council (KCDC) aligning their roles as the ‘kawanatanga (government) house’.
- 3 A governance group with the above partners was established to collectively oversee Waikanae Ki Uta Ki Tai and Waikanae Jobs for Nature. With Waikanae Jobs for Nature funding ending in December 2024, much of the discussion over the past 12 months has been around transitioning Ātiawa ki Whakarongotai towards a nursery/ecological restoration business as a long term outcome of Waikanae Jobs for Nature.
- 4 Sixteen Waikanae Ki Uta Ki Tai workstreams have been developed that fall under seven priority areas.

Priority Area	Number	Workstream
Ngā tai kōrero	1	Te Pātaka Kōrero Awa Stories
	2	Ko te kai a te Rangatira, he korero Community korero and connection
He Mana tō te awa A Tiriti partnership approach to work at the awa	3	He Mana tō te awa A Tiriti partnership approach to work at the awa
	4	He Ara Whanaunga Connecting the Awa, Mountains to Sea through access and pathways
	5	Tūraru o Te Parawhenua Partnered approach to flood and erosion risk management
	6	Para ki Wai reduce sedimentation impacts on the Awa and its tributaries
	7	Aromātaki ki te Wai Coordinated catchment monitoring
	8	Te Huru huri o Nuku Native Planting and other required intervention to revitalise habitat and natural patterns throughout the Awa
	9	Te Taiao Tāmoremore Coordinated pest animal and weed control

He Huinga Waiora Ki uta ki Tai Living Map	10	He Huinga Waiora Ki uta ki Tai Living Map
Te Waiora Rongoā Intergenerational Healing and Restoration	11	Te Waiora Rongoā Intergenerational Healing and Restoration
Kura Taiao Learning from and within Te Taio	12	Te Puna Taiao Iwi Taiao education pathway
	13	Te Kura Hourua Partnerships with local education providers
Mahinga Kai Mahinga Kai Revitalisation	14	Mahinga Kai
Te Waitaputaputa Action Plan Management and Communication	15	Te Mahi Whakahaere Action Plan resourcing, coordination and support
	16	Te Ngutu Kūkū Waikanae ki Uta ki Tai Communications

- 5 The above workstreams are intended to be delivered in a phased approach, dependent on available funding. Each agency also has Business as Usual in the Waikanae catchment and will continue on with this work, but will incorporate this under the WKUKT banner where possible.
- 6 A lease was signed by Ātiawa ki Whakarongotai for the nursery and training buildings at Otaraua Park in February 2024. The lease expires 30 September 2025.
- 7 Under the Te Mahi Whakahaere workstream, a two-year Deed of Grant of Funds between the partners was signed in October 2024 that will provide Ātiawa ki Whakarongotai with \$106,000 per annum to employ two part-time staff to help implement the Waikanae Ki Uta Ki Tai Action Plan. Councils contribution to this is \$33,000 per annum.
- 8 Other recent work under the banner of Waikanae Ki Uta Ki Tai has been identifying and remediating fish passage barriers by Greater Wellington, blackberry and gorse clearance and restoration planning on the Kotuku land in Waikanae Estuary Scientific Reserve by Department of Conservation, and clearing exotic grasses and willows to plant whitebait spawning habitat species adjacent to Weggery Drive by Kāpiti Coast District Council. This work falls under the Te Huruheru o Nuku, Te Taiao Tāmōremore and Mahinga Kai workstreams.
- 9 Additionally in 2023 the Rongoā of the ĀRT Confederation secured significant funding. Part of this funding will benefit the Waikanae awa and will progress work under the Te Waiora Rongoā workstream.

HE TAKE | ISSUES

- 10 No issues are being presented as part of this update.

NGĀ KŌWHIRINGA | OPTIONS

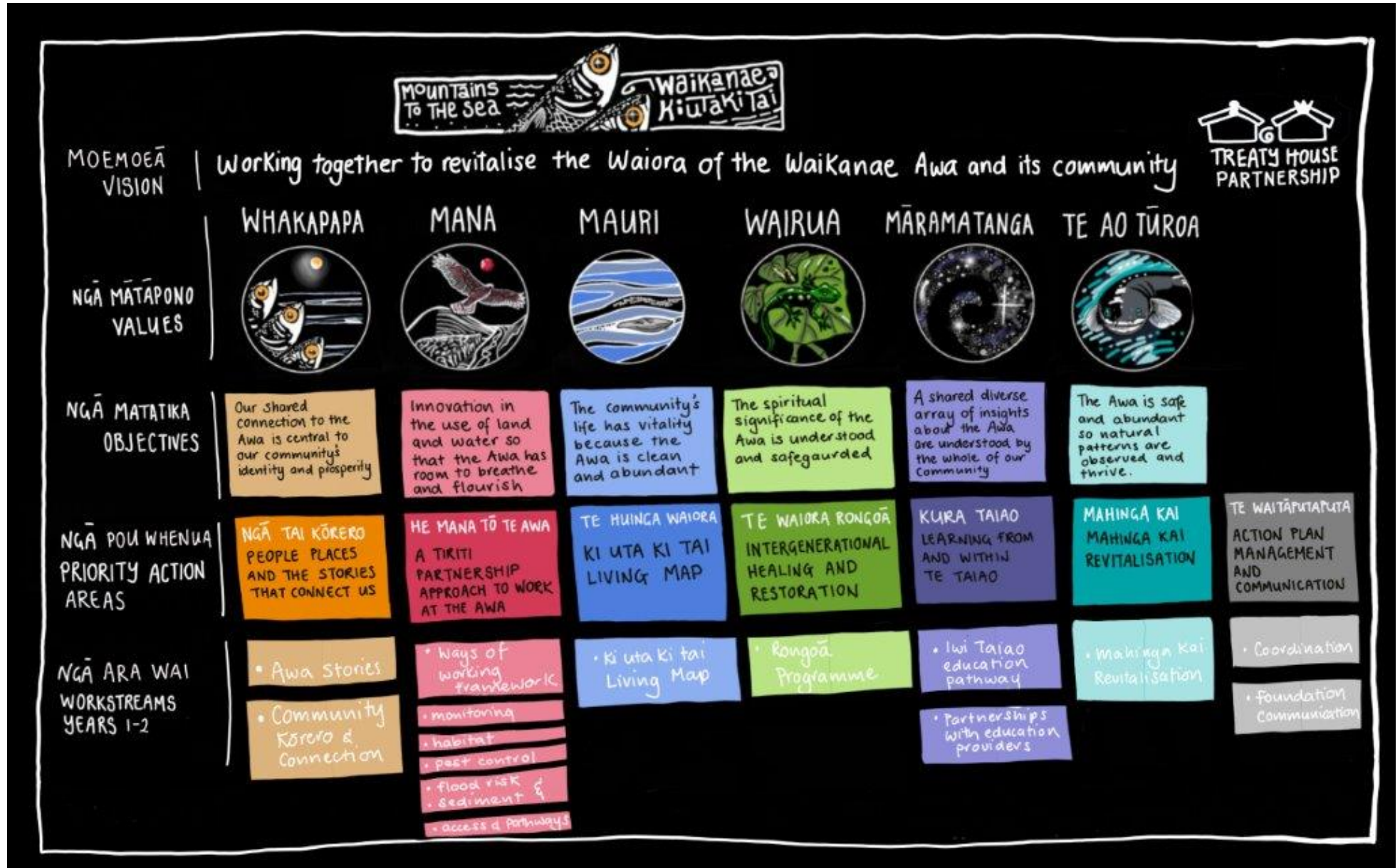
- 11 No options are presented in this paper.

NGĀ MAHI PANUKU | NEXT STEPS

12 There are no next steps for the Committee.

NGĀ ĀPITIHANGA | ATTACHMENTS

1. WKUKT Action Plan visual summary [↓](#)



8.2 WASTE UPDATES: LITTER INTELLIGENCE & THE OTAIHANGA ZERO WASTE HUB

Kaituhi | Author: **Robbie Stillwell, Waste Projects Manager**

Kaiwhakamana | Authoriser: **Sean Mallon, Group Manager Infrastructure and Asset Management**

TE PŪTAKE | PURPOSE

- 1 This presentation provides the Climate and Environment Committee with an update on the Litter Intelligence programme currently being delivered in Kāpiti, and an update on the Otaihanga Zero Waste hub operations.

TAUNAKITANGA | RECOMMENDATIONS

- A. **Note** the update provided.

TŪĀPAPA | BACKGROUND

- 2 **Litter Intelligence:** The regional Waste Management & Minimisation Plan (WMMP 2023-2029), adopted by Kāpiti in December 2023, includes the following action:
#R8: Monitor litter across the region to understand the extent of the issue and implement further actions to prevent harm to our natural environment.
- 3 Kāpiti Coast District Council has contracted Sustainable Coastlines to engage the local community, schools, mana whenua and other stakeholders in the Litter Intelligence programme in order to provide the Council, and regional work program with scientifically robust data from seven coastal sites and one wadable stream site.
- 4 Litter Intelligence is a pre-existing program being utilised around the region to achieve this target. Led by New Zealand charity Sustainable Coastlines, the programme works in close collaboration with the Ministry for the Environment, Department of Conservation and Statistics New Zealand.
- 5 The program has demonstrated success in various regions, providing real-time data and insights that have informed local and national policies on marine litter. Its track record of reliable data collection, combined with the active involvement of community volunteers, provides tangible evidence of the program's effectiveness and reliability.
- 6 We have contracted Sustainable Coastlines for 32 litter survey events conducted at quarterly intervals across seven coastal and one stream site as detailed in each quarterly report, with data uploaded to the public national dashboard.
- 7 Sustainable Coastlines offers training workshops for groups who would like to take part in ongoing litter data collection on their local coastline. Workshops are free for community groups, schools and iwi/hāpu groups. The workshop passes on skills in surveying, data collection, and Health & Safety that will allow our community to play an important role in this important long-term program.
- 8 **Otaihanga Zero Waste Hub:** officially opened on September 4th 2024, after a soft launch in June.
- 9 Around 40 tonnes of reusable or recyclable material has been received on site in this time.
- 10 New kiosks are being constructed on site out of materials sourced from the deconstruction of the Waikanae Library & Te Newhanga.
- 11 The website (otaihangezowaste.com) & [Facebook](#) page are now live.

- 12 The site opening hours have been expanded, and is now open Thursday & Friday 9.30-2.30, and Saturday 9.30-4.
- 13 Two new subleases are now in place on site; Organic Wealth & Anomaly. Organic Wealth have created a community compost corner, where “people can come to interact with nature & view models of home composting solutions,” and drop off food scraps to be composted. Anomaly has set up a workshop to recycle or repair sewing machines
- 14 Meeting rooms or workshop spaces are now available for hire.

HE TAKE | ISSUES

- 15 No issues are being presented as part of this update.

NGĀ KŌWHIRINGA | OPTIONS

- 16 No options are being presented as part of this update.

NGĀ MAHI PANUKU | NEXT STEPS

17. Register interest for groups that may be interested in conducting a litter survey by emailing the waste team at wasteminimisation.kapiti@kapiticoast.govt.nz

NGĀ ĀPITI HANGA | ATTACHMENTS

1. Waste Updates: Litter Intelligence & the Otaihanga Zero Waste Hub Powerpoint Slides [↓](#)

WASTE UPDATES: LITTER INTELLIGENCE & THE OTAIHANGA ZERO WASTE HUB

Climate and Environment Subcommittee
Thursday November 7th 2024.



Litter intelligence



Litter Intelligence.
Data. Insights. Action.

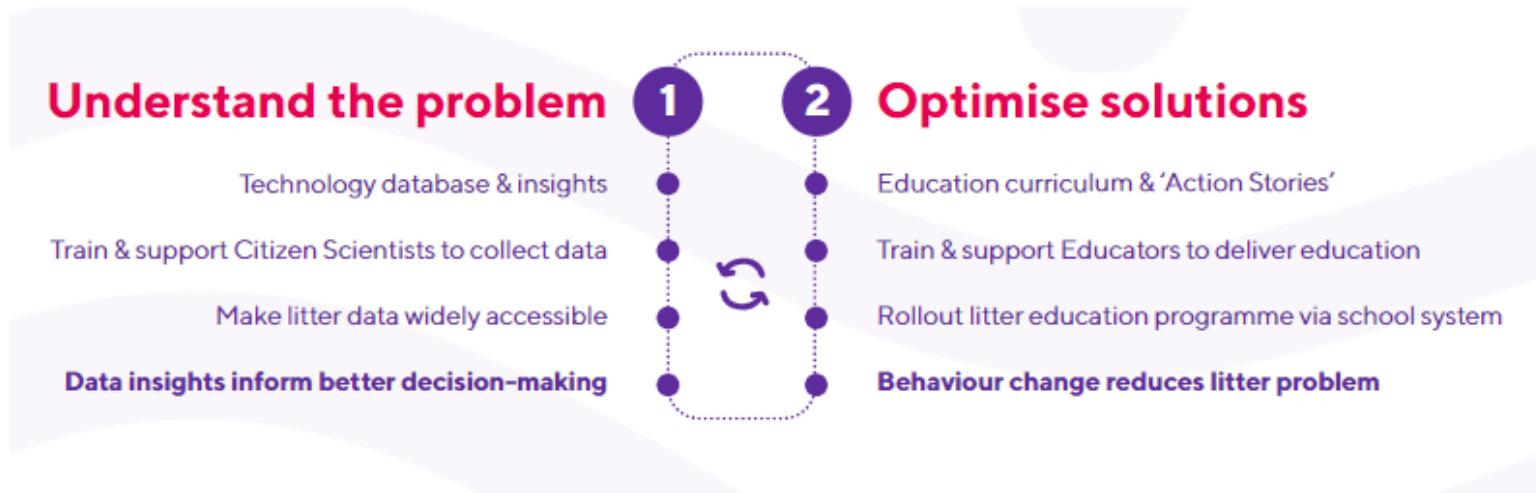
THE PROBLEM

Litter impacts our health, culture, environment and economy, especially when it enters our marine ecosystems.

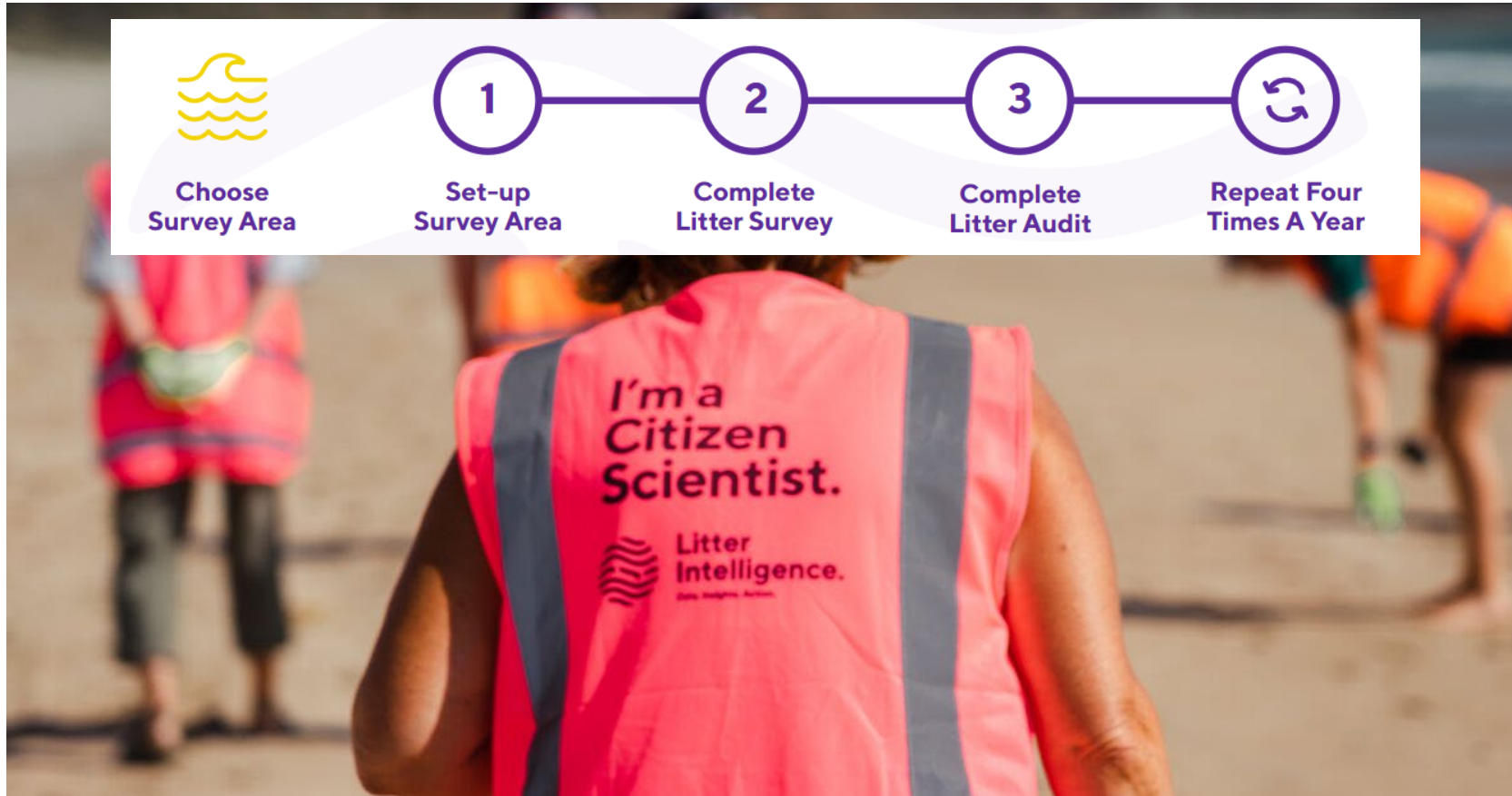
Often, communities affected by litter aren't able to take part in decision-making for solutions.

“We cannot improve what we do not measure. We need accurate litter data to understand the problem so we can optimise solutions, and inspire action for a litter-free Aotearoa”

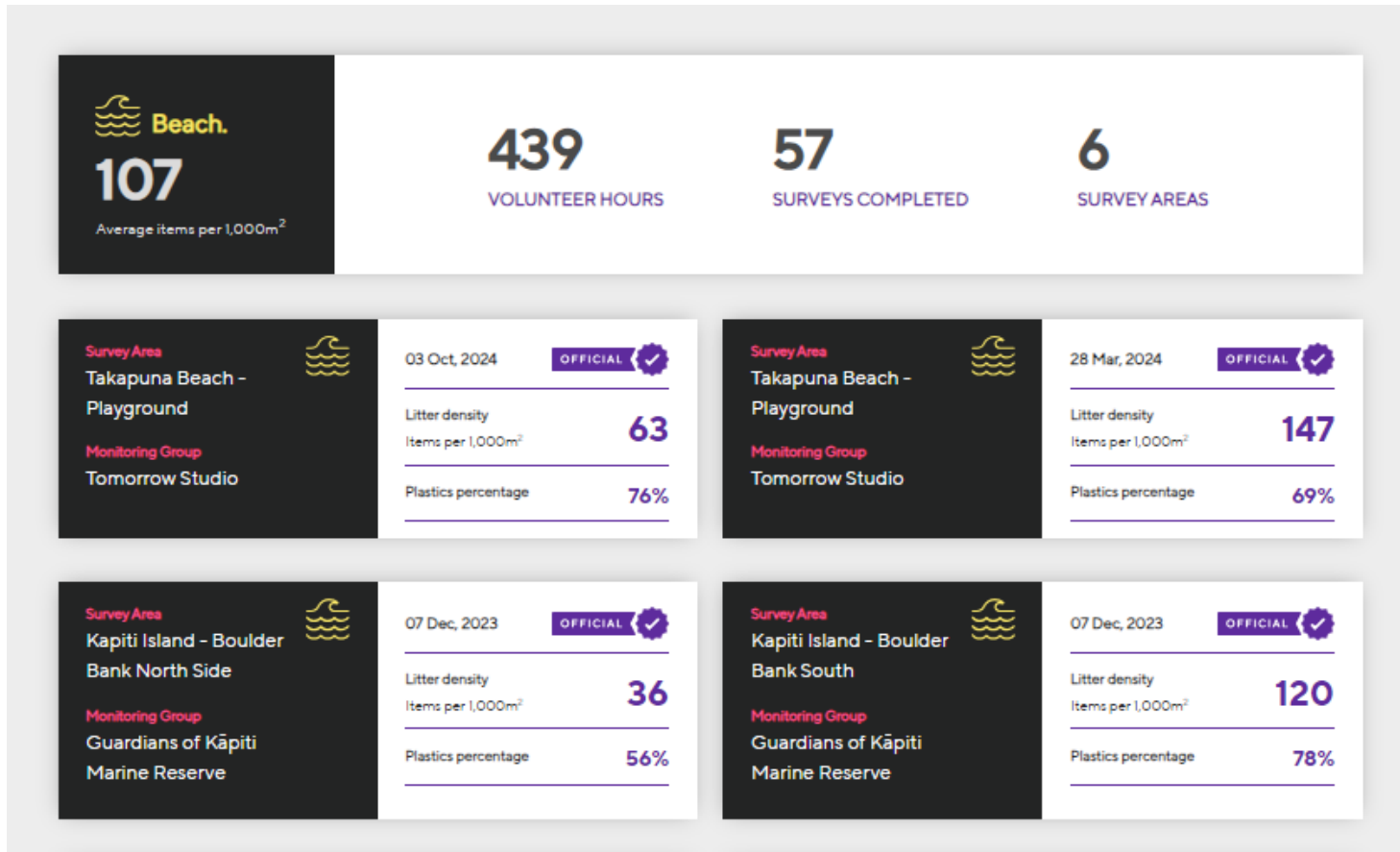
Litter intelligence



Litter intelligence



Litter intelligence



Litter Survey

Survey Area
Kapiti Island - Boulder Bank South

Monitoring Group
Guardians of Kāpiti Marine Reserve

Survey Date
7 December 2023

Lead Citizen Scientist
Joy Knight

Overview

OFFICIAL

Visual Assessment Grade **B**

Citizen Scientists **9**

Survey Hours **5.6**

Audit Hours **0.8**

Survey Area **100m x 10m**

Surface **Rock Rubble**

Litter density **120**
Items per 1,000m²

Products

120 items

16499 weight (g)

Type	Count	Weight (g)
Plastic	94	1660
Resin pellets	A	N/A
Straws	2	1
Food wrappers	9	13
Unidentifiable soft plastic fragments	15	18
Bottles <= 2 L	3	122
Bottle caps & lids	9	41
Safety & construction related	1	18
Fishing line	1	3
Mesh bags	1	3
Gardening & farming related	4	182
Unidentifiable hard plastic fragments	26	188

Materials

BY ITEMS | BY WEIGHT (g)

Would you like to analyse the data yourself? [DOWNLOAD THE DATA](#)

Or share if you think this data would be interesting to others. [SHARE THIS SURVEY](#)

If you would like to learn how this data was collected. [OUR METHODOLOGY](#)

What you can do

- Getting involved is easy. Sustainable Coastlines offers training workshops for groups who would like to take part in ongoing litter data collection on their local coastline.
- Workshops are free for community groups, schools and iwi/hāpu groups, and we have a sponsorship package available for corporates who would like to get involved
- The workshop passes on skills in surveying, data collection, and Health & Safety that will allow you to play an important role in this important long-term program

Otaihanga Zero Waste Hub





Official opening

“think of this place as a wetland that slows down the flow of materials [for disposal]”

Expanded hours

OPENING HOURS

Rāpare – Thursday 9:30-2:30

Rāmere – Friday 9:30-2:30

Rāhoroi – Saturday 9:30-4:00

YOUR NEW GO-TO TRADE SHOP AND WASTE PARTNER ON THE KĀPITI COAST

At Otaihanga Zero Waste we're here to work with the community to revalue, reuse and repurpose construction and demolition waste.

Website & Facebook launched



What can you do?

What can I do at the site?

- Drop off materials for reuse and recycling
- Purchase secondhand materials for reuse
- Hire a meeting room / workshop space

What else can I do there?

- Get in touch with the team if you are looking for:
- Advice on how to reduce construction waste
- A source of materials
- A material collection partner
- Space for your business

Materials accepted

What material can I drop off there?

- Reusable timber
- Building materials: doors and metal window frames; insulation; tools
- Metal: all metal items, hardware, car batteries
- PVC
- Plate window glass
- Food and beverage cartons (aka TetraPak cartons)
- Plastic and metal lids

Compost Composting Corner

Our friends [Organic Wealth](#) are now on-site and have created a Community Composting Corner where people can come to interact with nature and view live models of home composting solutions. People also have the option of dropping off their food waste scraps which will be composted on-site. Organic Wealth is working towards establishing a composting hub at the site and community composting workshops.



Otaihanga Zero Waste
9h · 🌐

Did you know we share our site with like-minded businesses. Drop in and see David and the team from Anomaly New Zealand when you need your sewing machine repaired or to have recycled when it's reached the end of its life.
[#reuse](#) [#repurpose](#) [#revalue](#) [#repair](#)



Anomaly New Zealand
17 October at 12:54 · 🌐

🔥 Exciting News! 🔥

I'm happy to let you all know that I'll now be available at the Otaihanga Zero Waste Hub every Thursday and Friday, from 09:30 to 15:00! 🌱

You can find me at 200 Otaihanga Road, Paraparaumu, where you can drop off your sewing machines for service or recycling. Whether your machine needs a tune-up or you're looking to recycle an old one, I've got you covered. ♻️

Let's work together to reduce waste and give these machines a second chance! Pop by for a chat or drop off your machine and help support a sustainable future. ❤️

See you there! ✨

[#ZeroWaste](#) [#Sustainability](#) [#Recycling](#) [#SewingMachineRescue](#) [#SupportLocal](#) [#OtaihangaZeroWasteHub](#) [#CommunityFocused](#)

👍❤️ 11

2 comments 1 share



8.3 ESTIMATED GHG EMISSIONS FROM STAFF COMMUTING AND WORKING FROM HOME

Kaituhi | Author: **Matthew Nabney, Advisor Sustainability**

Kaiwhakamana | Authoriser: **Brendan Owens, Group Manager Customer and Community**

TE PŪTAKE | PURPOSE

- 1 The purpose of this report is to provide you with the results from a recent staff commuting and working from home survey (the survey) that the Climate Action and Connected Communities team undertook in June 2024.
- 2 The survey is used to help Council estimate the greenhouse gas (GHG) emissions produced by staff commuting and working from home habits.

TAUNAKITANGA | RECOMMENDATIONS

- A. **Note** that the Climate Action and Connected Communities Team undertook a staff commuting and working from home survey in June 2024.
- B. **Note** that the results from the survey are used to estimate the GHG emissions produced by staff commuting and working from home habits.
- C. **Note** that the estimated GHG emissions produced by staff commuting and working from home are 375tCO₂-e which is 10% of Council's current GHG emissions footprint.
- D. **Note** that Council will be required to set a target for these emissions by the end of 2025.

TŪĀPAPA | BACKGROUND

- 3 Council is required under the Toitū carbonreduce programme to expand monitoring and reporting its category 3-6 emissions. The former Sustainability and Resilience Team undertook a similar survey at the end of 2023.
- 4 The survey format is an effective tool to estimate the GHG emissions produced by staff commuting and working from home. This data supports Council to expand its category 3-6 emissions monitoring and reporting to enable target setting for these emissions by the end of 2025.
- 5 For the 23/24FY, the estimated GHG emissions produced from staff commuting and working from home (if applied across all 410.5 FTEs), are estimated at 375tCO₂-e, which is similar to the total emissions produced by the sludge processed at the Paraparaumu and Ōtaki wastewater treatment plants.

HE TAKE | ISSUES

- 6 These emissions do not currently fit within Council's mandatory reporting boundary (used to determine progress against Council's current targets) but by the end of 2025, Council will be required to report these emissions. And when they are included, they will increase Council's GHG footprint by ~10% (based on our current footprint).

NGĀ KŌWHIRINGA | OPTIONS

- 7 There are no options for you to consider in this short report.

NGĀ MAHI PANUKU | NEXT STEPS

- 8 Going forward, the Climate Action and Connected Communities Team (the Team) intend to run this survey at least once per year but ideally twice per year, to account for the impacts of seasonal variability on commuting habits (as recommended by Toitū).

- 9 The Team will use this data to consider options to support staff to use alternative forms of commuting transport and will continue to develop its work programme to set a target for these emissions by the end of 2025.
- 10 Any options considered will developed with input from the Council 'Green Team' (the intra-council group of officers whose work directly or indirectly relates to environmental sustainability), and approval from SLT, before implementation.
- 11 We will also provide you with the results from Council's GHG inventory audit in early 2025 following verification in November 2024.

NGĀ ĀPITI HANGA | ATTACHMENTS

1. 2024 Staff working from home results for CES [↓](#)

Results from 2024 staff commuting and working from home survey

Matt Nabney
Advisor Sustainability



Background

- Used to capture Category 3-6 emissions
- Good response rate with 191 respondents
- Capturing this data meets requirements under the Toitū carbonreduce programme

Help us collect transport information and WIN

We're collecting information about how our staff commute to and from work.



This important information helps us to:

- Make decisions about ways to reduce our transport emissions.
- Support schemes like discounted e-bike purchases.
- Maintain our Toitū Envirocare verification that helps us to receive lower interest rates on Climate Action Loans.

Complete the quick survey today!



WIN Be the fastest team with the highest proportion of participation and win a very very special prize!

For more info contact Sustainability Advisor Matt Nabney:
Matthew.Nabney@KapitiCoast.govt.nz

Kāpiti Coast
DISTRICT COUNCIL

Kāpiti Coast
DISTRICT COUNCIL
Me Huri Whakamuri, Ka Tiro Whakamua

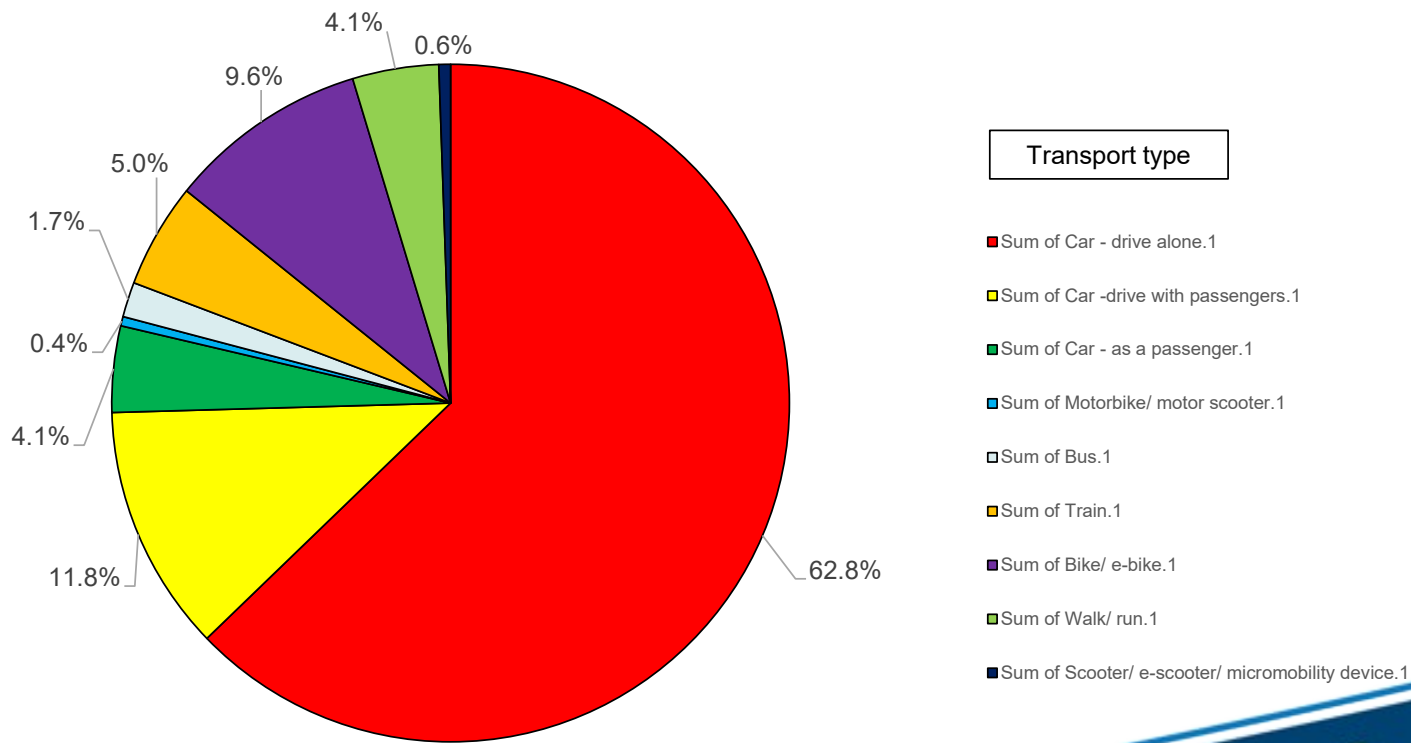
Summary of key results

- Estimated staff commuting and working from home emissions per year are 375tCO₂-e, per year*
- This is equivalent to the emissions from the sludge produced by the Ōtaki and Paraparaumu WWTPs
- 97% of commuting based emissions are produced by car travel

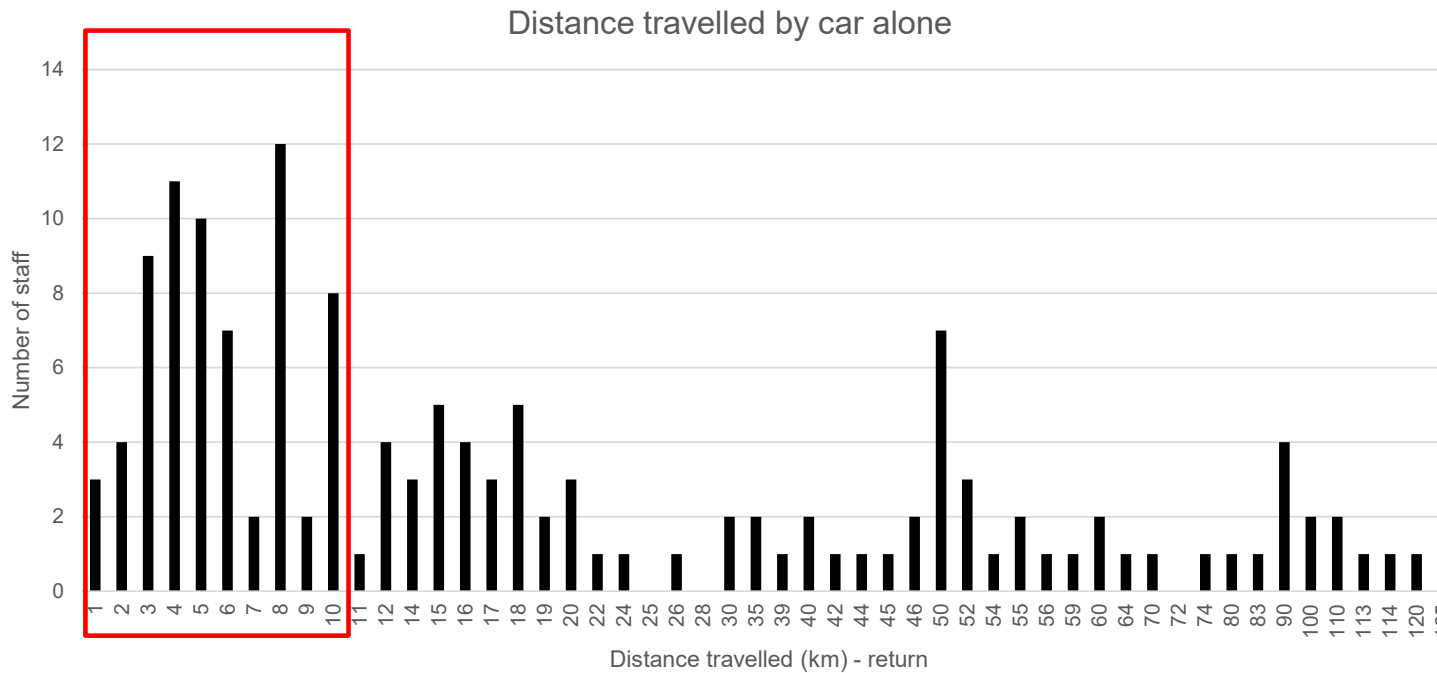
**If applied across all 410.5 FTEs.*

Commuting transport type

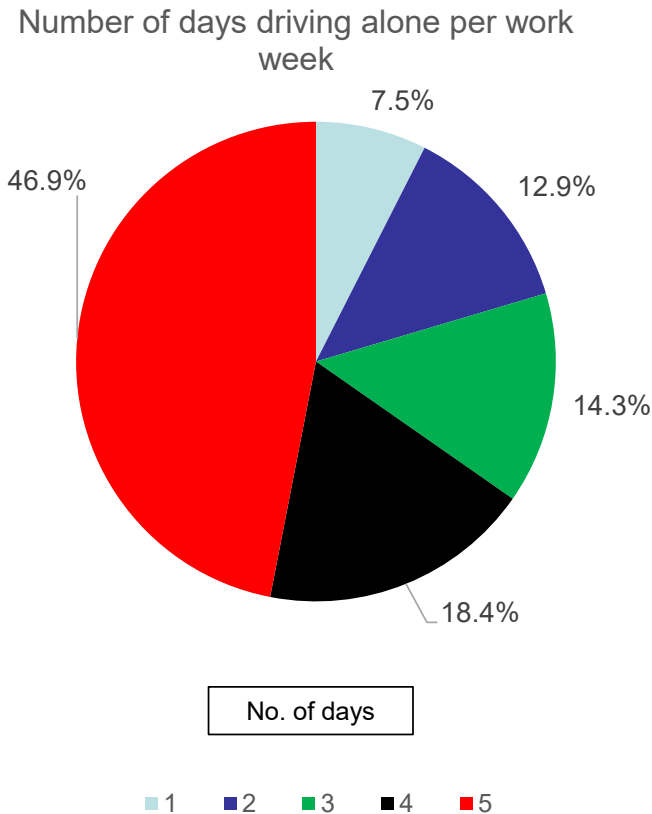
Total days commuting by transport type (per work week)



Distance between work and home – driving alone

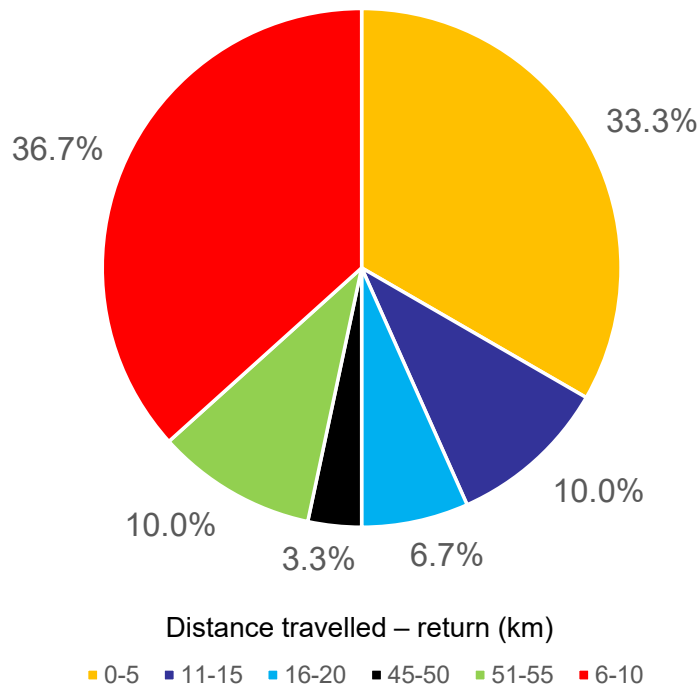


Number of days driving alone



- 47% of respondents drive alone 5 days per week
- 7.5% drive alone at least 1 day per week
- 46% drive alone 2+ days per week

Distance travelled by bike



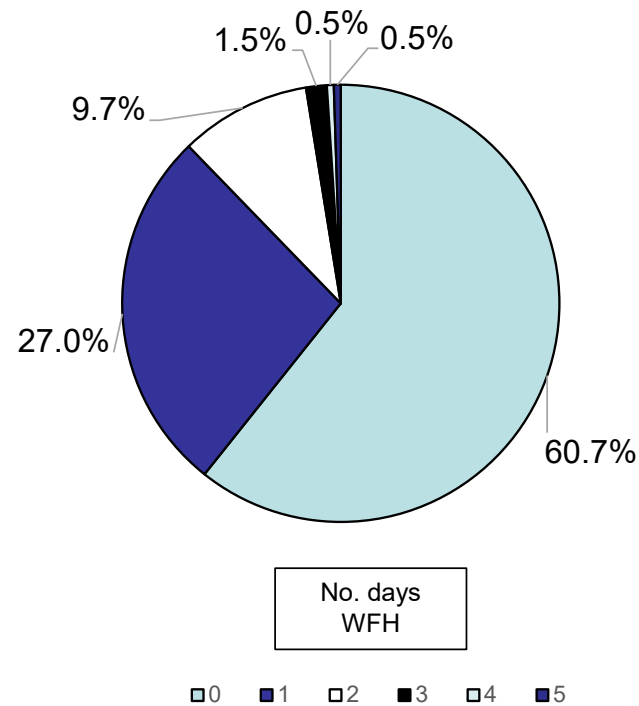
- 33% of respondents travel up to 5kms (return)
- 37% of respondents travel between 6-10km (return)

Working from home

- 61% of respondents do not work at home
- 27% work from home 1 day per week
- 13% work 2+ days per week

**Survey results may differ compared to the Accommodation Survey due to the framing of WFH questions*

How many days a week do you work from home?



Next steps

- We will continue to develop the category 3-6 emissions work programme.
- We will use this data to develop initiatives to reduce emissions from staff commuting
- We will provide you with the results of the carbon inventory audit at the beginning of 2025.

Suggestions or pātai?



8.4 SUSTAINABLE SEPTEMBER PROGRAMME REPORT

Kaituhi | Author: **Rob Dunn, Sustainability Advisor Communities**

Kaiwhakamana | Authoriser: **Brendan Owens, Group Manager Customer and Community**

TE PŪTAKE | PURPOSE

- 1 The purpose of this report is to report back to the Climate and Environment Committee on the 2024 Sustainable September programme and to seek input into the development of the 2025 programme.

TAUNAKITANGA | RECOMMENDATIONS

- A. That the Climate and Environment Committee note this report.
- B. That the Climate and Environment Committee provide direction towards the 2025 programme as appropriate.

TŪĀPAPA | BACKGROUND

- 2 In 2024 Council piloted a “Sustainable September” programme to Kāpiti communities, a month-long celebration of sustainability, climate action and community connection with free and affordable workshops and activities across Kāpiti. The programme picked up and built on Council’s former “No.8 Wire” programme.
- 3 Over 30 events and workshops were offered through the 2024 Sustainable September programme, with over 850 participants.
- 4 Sustainable September was a collaboration with our community partners, with most workshops and events led by community organisations, and some by Council. Workshop topics included waste minimisation and clothing/household item repair; gardening, composting and biochar; cycling courses; sustainable art; conservation; and climate action for local businesses.
- 5 Further details regarding the 2024 programme will be provided via powerpoint presentation.
- 6 We will also seek sponsorship for the 2025 programme from our local business community.

HE TAKE | ISSUES

- 7 The Sustainable September programme was put together and promoted within a tight time frame. This limited participation numbers at some events.
- 8 September was a busy month for Council with a number of other programmes and events on. This put pressure on communication channels and may also have limited participation.

NGĀ KŌWHIRINGA | OPTIONS

- 9 For 2025, we propose re-branding the programme as “Sustainable Spring”. This would relax the programme schedule across September to November, make organisation and communication simpler, and provide more opportunity for community engagement.

NGĀ MAHI PANUKU | NEXT STEPS

- 10 Council officers will incorporate any feedback from the Climate and Environment Committee into further development of the 2025 Sustainable Spring programme. A progress update can be provided to the Climate and Environment Committee in mid-2025.

NGĀ ĀPITI HANGA | ATTACHMENTS

Nil

8.5 2025 KĀPITI CLIMATE CHANGE EDUCATION & OUTREACH OVERVIEW

Kaituhi | Author: **Rob Dunn, Sustainability Advisor Communities**

Kaiwhakamana | Authoriser: **Brendan Owens, Group Manager Customer and Community**

TE PŪTAKE | PURPOSE

- 1 The purpose of this report is to provide the Climate and Environment Committee with an overview of proposed climate change education and outreach programmes for both Council staff and Kāpiti communities in 2025.

TAUNAKITANGA | RECOMMENDATIONS

- A. That the Climate and Environment Committee note this report.
- B. That the Climate and Environment Committee provide direction towards the development and delivery of these proposed programmes as appropriate.

TŪĀPAPA | BACKGROUND

- 2 Council has made significant reduction of its' corporate carbon emissions over the last 10+ years and this work continues across both its' operations and broader supply chains.
- 3 Community engagement and education is another important consideration within Councils' overall climate response. With the Climate Action and Connected Communities (CACC) team now fully staffed, there is opportunity to build on the work of 2023 and 2024 and bring a range of education programmes to our communities.
- 4 The CACC team proposes to offer climate related education and engagement opportunities through:
 - The Aotearoa Bike Challenge (TBC for 2025)
 - Over The Fence Cuppas
 - Greener Neighbourhoods programme
 - A Lecture Series with guest speakers
 - Sustainable Spring programme
 - Workshop series for local businesses in collaboration with Economic Development team and Sustainable Business Network
- 5 Specific education and engagement opportunities through these programmes include:
 - "Climate 101" education workshops (in person)
 - Climate education resources and initiatives (offered both online and as hardcopy)
 - WREMO education sessions
 - Possibilities around waste audits, gardening/ compost workshops, street play TBC
- 6 Further details of these programmes will be provided via powerpoint presentation.
- 7 We are also further developing internal staff climate education resources with a view to engaging all staff with:
 - In person workshops
 - Online education resources
 - Online/ in person workshops on specific topics
- 8 If useful, the CACC team can also offer climate education to elected members as part of induction post the 2025 election. This would be designed to complement the existing LGNZ

climate change education resource for elected members and provide more context specific to this Council.

HE TAKE | ISSUES

- 9 Climate change remains a challenging topic with some members of our communities. Consideration has been given to how to provide positive education and engagement opportunities in a way that caters for different audiences while minimising risks.

NGĀ KŌWHIRINGA | OPTIONS

- 10 The Climate and Environment Committee may have advice regarding the proposals outlined above.
- 11 In particular, the Climate and Environment Committee may have advice over point 8, the potential provision of climate education for Elected Members as part of induction.

NGĀ MAHI PANUKU | NEXT STEPS

- 12 Council officers will incorporate any feedback from the Climate and Environment Committee into further development of these education programmes. A progress update can be provided to the Climate and Environment Committee in early 2025.

NGĀ ĀPITI HANGA | ATTACHMENTS

Nil

8.6 2023 CLIMATE ACTION GRANTS: IMPACT AND ACCOUNTABILITY REPORTING

Kaituhi | Author: **Rob Dunn, Sustainability Advisor Communities**

Kaiwhakamana | Authoriser: **Brendan Owens, Group Manager Customer and Community**

TE PŪTAKE | PURPOSE

- 1 The purpose of this report is to provide the Climate and Environment Committee with a progress update on the 2023/2024 Climate Action Grant projects.

TAUNAKITANGA | RECOMMENDATIONS

- A. That the Climate and Environment Committee note this report.
- B. That the Climate and Environment Committee continue to explore any funding opportunities that may enable the Climate Action Grants to be offered in the future.

TŪĀPAPA | BACKGROUND

- 2 The Climate Action Grants were funded through Central Government's Better off Funding programme. Funding of \$200,000 was confirmed by the Department of Internal Affairs (DIA) in February 2023, which was allocated over two financial years, \$100,000 in 2023/2024 and \$100,000 in 2024/2025.
- 3 The 2023/2024 funding round was awarded to 11 applicants across a wide range of projects, including initiatives in food waste reduction and composting, nature restoration, circular economy, building sector, education, biochar, and active transport for primary school students.
- 4 There are two forms of accountability for these projects:
 - An interim project catchup, consisting of a site visit from Council staff part way through the project. This provides an opportunity for staff to review progress to date, build positive relationships with funding recipients, and identify any ways in which Council might be able to offer further support or help resolve challenges.
 - A final report on project completion. This is a written report on project outcomes in relation to original objectives, overall impact of funding, and how funds have been spent.
- 5 As funding for these projects was allocated through September-October 2023, and most final project reporting has been completed, now is an appropriate time to report back to the Climate and Environment Committee on project outcomes and impact.
- 6 Key project information and outcomes are summarised in Appendix One. Further details will be provided via powerpoint presentation.

HE TAKE | ISSUES

- 7 There is no further funding available for Climate Action Grants now that all Better Off funding has been allocated.
- 8 Detailed project reporting is still to come from some funding recipients.

NGĀ KŌWHIRINGA | OPTIONS

- 9 No options are presented in this paper.

NGĀ MAHI PANUKU | NEXT STEPS

- 10 Council staff will continue to support projects from the 2023/2024 funding round that are ongoing, and work with recipients to complete reporting requirements.
- 11 Projects from the 2024/2025 funding round are getting underway. Council staff will work with funding recipients to support successful outcomes.

Appendix One: Climate Action Grant 2023/2024 funding recipients and outcome summary

Applicant	Project	Project status	Funding received	Funding spent on	Impact/ Outcomes	Comments
1. Organic Wealth	Kāpiti Community Compost project	Complete	\$3,773.15	Composting bins, work farm bins, bin labels, trailer sign.	Expansion of food waste collection; 36 tonnes diverted in 2023, on track for 52 tonnes diverted in 2024.	Original plan included establishment of composting bins at Otaihanga Zero Waste project. Technicalities have slowed this aspect of the project.
2. Morepork Reserve Care Group (now Manu Park Restoration Group)	Native bush restoration	Complete	\$850	Purchase of 30 predator traps and bait.	Successful trapping programme established. 100 new plants added to the reserve, significant weeding work carried out. Formation of community group to carry out restoration work, leading to increased community connection and cohesion.	
3. Kakariki Earth Ltd	Biochar Building Products	Complete	\$8,555	Biochar production, development and testing of biochar products for use within building envelope, district biomass feasibility assessment.	Development of building products which has generated significant industry interest, collaboration with local landowners, collaboration with other local biochar projects, 5 tonnes of CO2 sequestration.	Staff from Climate Action & Connected Communities and Economic Development teams supported the development of this project.
4. The Shed Project Kapiti	Establishing food waste collection, composting	Ongoing	\$15,700	Composting equipment. Establishing food collection services.	Establishment/ expansion of food waste collection, composting services in Paraparaumu and Otaki, currently collecting 200L per	Original plan included an E-bike to use as part of composting collection services. This aspect of the project was put on hold

Applicant	Project	Project status	Funding received	Funding spent on	Impact/ Outcomes	Comments
	and education services			Establishing education initiatives.	week from households, cafes, retail outlets. Collaboration with other local organisations on education initiatives. Establishment of Eco Buddy Project (ecobuddyproject.co.nz)	due to staff changes and safety considerations.
5. MenzShed Kāpiti	Replacing air compressor	Complete	\$12,430	Replacing air compressor.	Supporting MenzShed work: Building and repairing items for a wide range of organisations across Kāpiti communities; diverting waste from landfill, reducing overall consumption, and helping to promote circular economy principles.	
6. Kāpiti Coast Biodiversity Project	Re-establishing lowland podocarp forests across Kāpiti	Ongoing	\$14,000	Seed collection, growing seedlings in nurseries, planting and maintenance work.	Ongoing seed collection, growing of seedlings, planting and releasing work. Community collaboration over various aspects of this work.	This project runs over 3 years to approx September 2026.
7. Raumati Technology Centre	Food forest and plant nursery; stream, forest and dune restoration work.	Complete	\$10,500	Building of greenhouse, nursery and irrigation systems; collection and growing of seedlings; prep of planting areas and planting; permaculture area design; range of education resources and initiatives.	Wide range of education and engagement opportunities for 1000+ year 7/8 students every year; and for community members through community workshops.	

Applicant	Project	Project status	Funding received	Funding spent on	Impact/ Outcomes	Comments
8. Paekākāriki Orchard and Gardens	Portable community biochar	Complete	\$9,698.85	Biochar kiln and associated equipment, community biochar workshops, project coordination.	Establishment of community biochar project. Delivery of approx 6 biochar workshops throughout the district. Collaboration with other funding recipients and wider community.	
9. Natural Build Otaki	Sustainable building education	Complete	\$4,818	Affordable sustainable building methods workshop delivered locally.	Delivery of 3 day workshop with approx. 10 local participants; collaboration with wider community.	Annual Earth Building Association of NZ conference being hosted in Ōtaki in 2025 (hundreds of participants).
10. Kāpiti Cycle Action	Raumati Bike Bus	Complete	\$16,475	Development and piloting of local Bike Bus project.	Establishment of 2 bike bus routes to Raumati Beach and Raumati South primary schools. Over 100 escorted student rides to date.	
11. Waikanae Estuary Care Group	Upgrading workbenches in nursery	Complete	\$3,200	Replacing wooden workbenches in nursery shade house with aluminium ones.	Enabling ongoing restoration, education and community engagement work in the Waikanae Estuary.	

8.7 UPDATE ON THE KĀPITI COAST TRAILS TRUST

Kaituhi | Author: **Cat Wylde, Advisor Recreational Tracks and Trails**
Janice Hill (External speaker)

Kaiwhakamana | Authoriser: **Brendan Owens, Group Manager Customer and Community**

TE PŪTAKE | PURPOSE

- 1 This report and presentation aim to provide the Climate and Environment Committee with a brief update on the establishment of the Kāpiti Coast Trails Trust and the proposed Paekākāriki to Pāuatahanui trail.

TAUNAKITANGA | RECOMMENDATIONS

- A. That the Climate and Environment Committee notes this report.
- B. That the Climate and Environment Committee notes that a Governance structure for the independent Trails Trust has been set up and has had their first meeting.
- C. That the Climate and Environment Committee receives the verbal update from the Trust representative Janice Hill on the Trust establishment and the progress to date on the Paekākāriki to Pāuatahanui trail.

TŪĀPAPA | BACKGROUND

- 2 The Kāpiti Coast is home to more than 40km of recreational tracks and trails, much of which is on land not managed or controlled by Council.
- 3 In November 2023, the Tracks and Trails Asset Management Plan (AMP) was approved by the Strategy and Finance Committee as the overarching principal document underpinning planning for recreational tracks and trails.
- 4 The AMP recognised that a Trust may be a more appropriate vehicle for delivering its outcomes than a Council business unit.
- 5 This is in part due to the complex nature of land ownership across which current and proposed new tracks and trails meander and that track development could be funded through external sources not available to Council i.e being able to access key Grants etc.

HE TAKE | ISSUES

- 6 Council resources are limited, meaning Council involvement in the establishment of the Trust has been largely supportive by nature.
- 7 New Tracks and Trails are currently not funded in the LTP but can be created when new subdivisions take place in areas where recreational linkages are required. These are then funded by the Financial Contributions payable by the developer. At present this remains Council's only funding means to establish new tracks and trails.
- 8 Although the Trust has a Governance structure in place and is progressing well, it is yet to be in a position to apply for grants and set up programs to support AMP outcomes.

NGĀ KŌWHIRINGA | OPTIONS

- 9 No options are required to be considered here.

NGĀ MAHI PANUKU | NEXT STEPS

10 Janice Hill will provide further details during her presentation.

NGĀ ĀPITIHANGA | ATTACHMENTS

1. P2P Trail - Wgtn Regional Trails - Sep24 [↓](#)





	35km trail from Pauatahanui to Paekakariki, via Mt Wainui		Traverses wetlands, dunes, hilltop ridges, sub-alpine, streams and valleys		Connecting MTB parks, regional parks, Kapiti, Porirua, Wellington, Hutt Valley		Around 1000m total elevation, trail high point 560m (Mt Wainui summit 722m) – max grade 7%
	Purpose-built shared trail for MTB (grade 3), pedestrians. Some sections for horse-riders		100% off-road trail, separated from motorised users		Built on public land – regional parks, road reserve, wildlife and recreation reserve		17km is existing trails, 18km is new trail, plus carpark, toilets, signage and other amenities
	Pest animal traps, bait stations to be managed along the full length of trail		Connected by public transport and roads to Wellington		Sunny, west-facing aspect – year-round trail		Two campsites en route, potential hut option, shelters and toilets

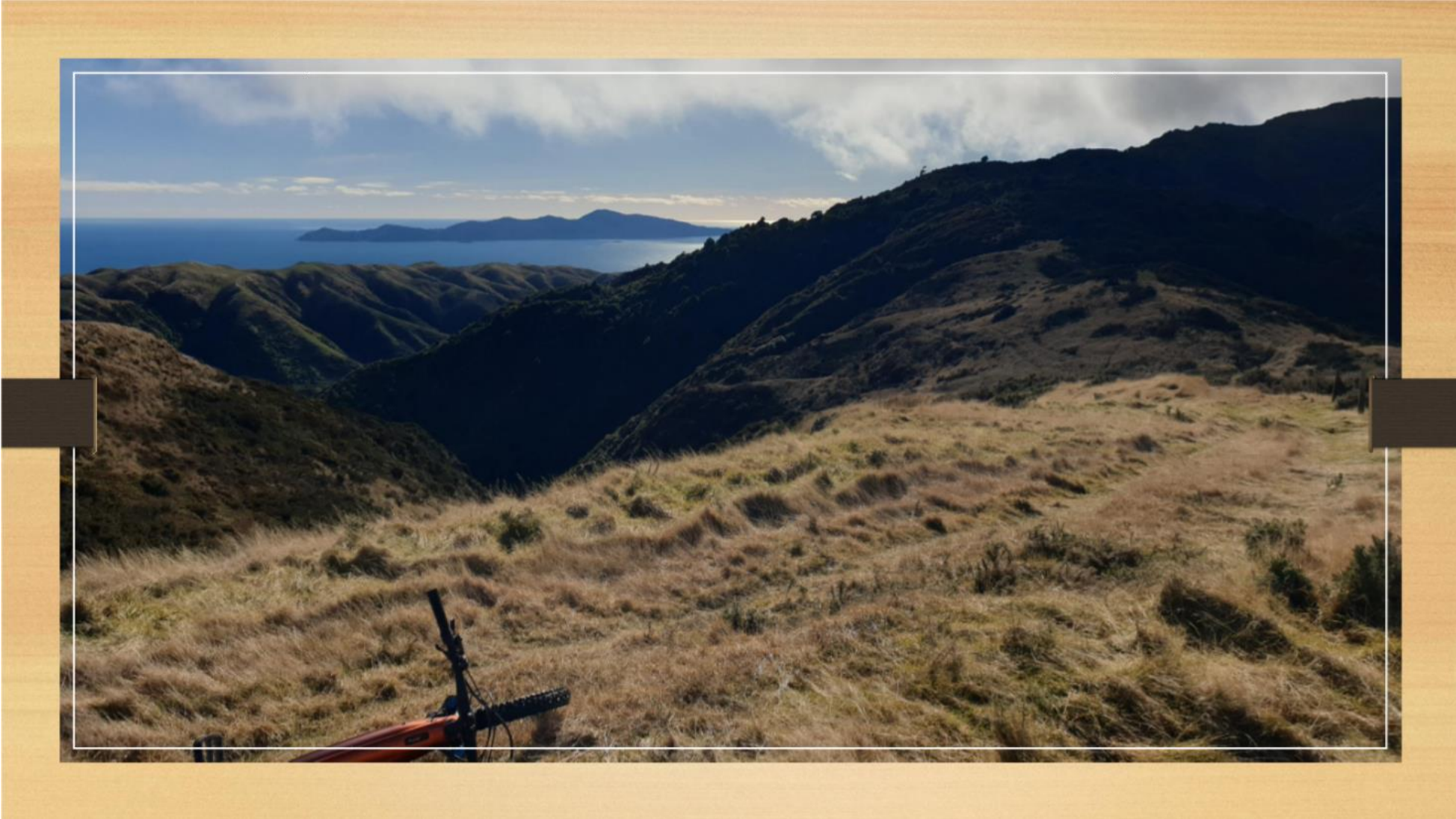


Benefits of the P2P trail

- New recreation opportunity (long trail) for the Wellington region (pedestrian, MTB, horse)
- Enhance reputation of Wellington as a trail destination with stunning scenery
- Economic benefits generated by increased visitation to an iconic trail (estimated 45-75,000 users pa)
- Biodiversity enhancement from improved pest animal management
- Significant opportunities for cultural and historic storytelling on the trail
- Improved safety for vulnerable users via an off-road path between Battle Hill and Pāuatahanui
- Additional car-parking capacity for Pāuatahanui
- Robust, sustainable trail, built largely on (and with) rock (no major bridges)

Regional Trails Network gap





Ambitions

The P2P to attract community support for nature-based trail visitors

P2P to become part of the Great Ride network

P2P to be recognised as a Regional 'Signature' Trail

Flourishing populations of native birds in the forests

Enhanced health and wellbeing of the Wellington community

P2P becomes part of a longer ride

Next Steps

- Obtain formal landowner permissions
- Secure foundation funding
- Establish governance structure (e.g. Trust)
- Obtain any necessary consents
- Develop implementation plan

9 TE WHAKAŪ I NGĀ ĀMIKI | CONFIRMATION OF MINUTES

9.1 CONFIRMATION OF MINUTES

Author: Maria Cameron, Advisor Governance

Authoriser: Mark de Haast, Group Manager Corporate Services

Taunakitanga | Recommendations

That the minutes of the Climate and Environment Subcommittee meeting of 20 August 2024 be accepted as a true and correct record.

NGĀ ĀPITI HANGA | ATTACHMENTS

1. Unconfirmed Minutes Climate & Environment Subcommittee meeting on 20 August 2024 [↓](#)

CLIMATE AND ENVIRONMENT SUBCOMMITTEE MEETING MINUTES

20 AUGUST 2024

**MINUTES OF THE KĀPITI COAST DISTRICT COUNCIL
CLIMATE AND ENVIRONMENT SUBCOMMITTEE MEETING
HELD IN THE COUNCIL CHAMBERS, GROUND FLOOR, 175 RIMU ROAD, PARAPARAUMU
ON TUESDAY, 20 AUGUST 2024 AT 9.34AM**

PRESENT: Cr Jocelyn Prvanov, Cr Sophie Handford, Cr Shelly Warwick, Cr Glen Cooper, Cr Liz Koh, Mr Christian Judge, Mr Simon Black
Via Zoom: Mayor Janet Holborow, Ms Kim Tahiwī, Mr Tim Sutton

IN ATTENDANCE: Mr Sean Mallon, Ms Kris Pervan, Mr Brendan Owens, Ms Kate Coutts, Ms Anna Smith, Ms Maria Cameron

WHAKAPĀHA | APOLOGIES: Mr Glen Olsen, Mr Michael Moore

LEAVE OF ABSENCE: Nil

1 NAU MAI | WELCOME

The Chair welcomed everyone to the meeting.

2 KARAKIA A TE KAUNIHERA | COUNCIL BLESSING

Cr Sophie Handford read the Council blessing.

3 WHAKAPĀHA | APOLOGIES

APOLOGY

COMMITTEE RESOLUTION CAES2024/17

Moved: Cr Liz Koh
Seconder: Cr Sophie Handford

That the apologies received from Mr Glen Olsen and Mr Michael Moore be accepted.

CARRIED

Nil

**4 TE TAUĀKĪ O TE WHAITAKE KI NGĀ MEA O TE RĀRANGI TAKE |
DECLARATIONS OF INTEREST RELATING TO ITEMS ON THE AGENDA**

No declarations were made in relation to items on the agenda.

**5 HE WĀ KŌRERO KI TE MAREA MŌ NGĀ MEA E HĀNGAI ANA KI TE
RĀRANGI TAKE | PUBLIC SPEAKING TIME FOR ITEMS RELATING TO THE
AGENDA**

No members of the public were present who wished to speak.

CLIMATE AND ENVIRONMENT SUBCOMMITTEE MEETING MINUTES**20 AUGUST 2024****6 NGĀ TEPUTEIHANA | DEPUTATIONS**

No deputations were received.

7 NGĀ TAKE A NGĀ MEMA | MEMBERS' BUSINESS

- (a) No leaves of absence were requested.
- (b) The Chair had not been advised of any matters of an urgent nature prior to the commencement of the meeting.

8 HE KŌRERO HOU | UPDATES**8.1 WASTE MINIMISATION EDUCATION PROGRAMMES AND WASTE LEVY GRANTS UPDATES**

Emma Evans, Waste Minimisation Advisor, introduced the report, asked that it be taken as read and answered members' questions.

COMMITTEE RESOLUTION CAES2024/18

Moved: Cr Liz Koh
 Seconder: Cr Shelly Warwick

That the Climate and Environment Subcommittee note the update provided in this report.

CARRIED

Cr Glen Cooper left the meeting at 9.51 am and returned to the meeting at 9.52 am.

Cr Glen Cooper left the meeting at 10.00 am and returned to the meeting at 10.04 am.

Cr Glen Cooper left the meeting at 10.20 am and returned to the meeting at 10.27am.

8.2 ACCESS AND TRANSPORT ASSET MANAGEMENT PLAN AND ASSOCIATED FUNDING

Sean Mallon, Group Manager Infrastructure and Asset Management, Mark Martin, Team Leader Rooding Asset Management Access & Transport and Ruchir Gaur, Manager Access & Transport introduced the report, asked that it be taken as read and answered members' questions.

COMMITTEE RESOLUTION CAES2024/19

Moved: Cr Jocelyn Prvanov
 Seconder: Cr Liz Koh

That the Climate and Environment Subcommittee **note** the Access and Transport Activity Management Plan 2024- 2027.

CARRIED

Appendices

- 1 KCDC 2024-33 Access and Transport Management Plan

Cr Glen Cooper left the meeting at 10.34 am and returned to the meeting at 10.35 am.

Cr Glen Cooper left the meeting at 10.57 am and returned to the meeting at 11.00 am.

CLIMATE AND ENVIRONMENT SUBCOMMITTEE MEETING MINUTES**20 AUGUST 2024**

Cr Glen Cooper left the meeting at 11.18 am and returned to the meeting at 11.19 am.

Cr Glen Cooper left the meeting at 11.19 am and did not return to the meeting.

8.3 SUSTAINABLE SEPTEMBER

Monique Engelen, Manager Climate Action and Connected Communities, and Rob Dunn, Sustainability Advisor Communities, introduced the report, asked that it be taken as read and answered members' questions.

COMMITTEE RESOLUTION CAES2024/20

Moved: Mr Simon Black
 Seconder: Cr Sophie Handford

That the Climate and Environment Subcommittee **receive** the update.

CARRIED**Appendices**

1 Sustainable September Presentation

9 PŪRONGO | REPORTS**9.1 UPDATE ON CLIMATE CHANGE AND RESILIENCE COMMUNITY THINK TANK.**

Kris Pervan Group Manager Strategy & Growth and Gina Anderson-Lister, Manager Strategy, introduced the report, asked that it be taken as read and answered members' questions.

COMMITTEE RESOLUTION CAES2024/21

Moved: Mr Christian Judge
 Seconder: Cr Liz Koh

That the Climate and Environment Subcommittee:

- A. **Acknowledge** and **thank** the valuable advice and efforts of the Climate Change and Resilience Community Think Tank (CRCTT) over the last 12 months, and completion of the CRCTT's terms (as set by the Terms of Reference)
- B. **Endorse** the need for ongoing independent advice (such as that provided by the CRCTT to date) and action on climate change and environmental protection through establishment of a new advisory group, in a manner consistent with other Council advisory groups.
- C. **Note** that work will progress in September to identify an interim Chair for the new advisory group, and the working group, who will develop a work programme, focus area groups, and a draft Terms of Reference for CES consideration.
- D. **Advise** whether you would like us to consider expanding the focus of the group to include broader environmental topics as part of this next phase of work, or retain the current scope, focused on climate change.

CARRIED

CLIMATE AND ENVIRONMENT SUBCOMMITTEE MEETING MINUTES**20 AUGUST 2024****10 TE WHAKAŪ I NGĀ ĀMIKI | CONFIRMATION OF MINUTES****10.1 CONFIRMATION OF MINUTES****COMMITTEE RESOLUTION CAES2024/22**

Moved: Cr Liz Koh
Seconder: Mr Simon Black

That the minutes of the Climate and Environment Subcommittee meeting of 2 July 2024 be accepted as a true and correct record.

CARRIED**11 KARAKIA WHAKAMUTUNGA | CLOSING KARAKIA**

The Chair closed the meeting with karakia.

The Te Komiti Whāiti Āhuarangi me te Taiao | Climate and Environment Subcommittee meeting closed at 12.36pm

.....
HEAMANA | CHAIRPERSON

10 KARAKIA WHAKAMUTUNGA | CLOSING KARAKIA

Kia tau ngā manaakitanga ki runga i a
tātou katoa,

May blessings be upon us all,

Kia hua ai te mākihikihi, e kī ana

And our business be successful.

Kia toi te kupu

So that our words endure,

Kia toi te reo

And our language endures,

Kia toi te wairua

May the spirit be strong,

Kia tau te mauri

May mauri be settled and in balance,

Ki roto i a mātou mahi katoa i tēnei rā

Among the activities we will do today

Haumi e! Hui e! Taiki e!

Join, gather, and unite! Forward together!