



# **RĀRANGI TAKE AGENDA**

## **Te Komiti Whāiti Toitūtanga Pāpori | Social Sustainability Subcommittee Meeting**

**I hereby give notice that a Meeting of the Te Komiti Whāiti Toitūtanga Pāpori | Social Sustainability Subcommittee will be held on:**

**Te Rā | Date: Thursday, 2 November 2023**

**Te Wā | Time: 9.30am**

**Te Wāhi | Location: Council Chamber  
Ground Floor, 175 Rimu Road  
Paraparaumu**

**Mike Mendonça  
Acting Group Manager Place and Space**

**Kāpiti Coast District Council**

**Notice is hereby given that a meeting of the Te Komiti Whāiti Toitūtanga Pāpori | Social Sustainability Subcommittee will be held in the Council Chamber, Ground Floor, 175 Rimu Road, Paraparaumu, on Thursday 2 November 2023, 9.30am.**

**Te Komiti Whāiti Toitūtanga Pāpori | Social Sustainability Subcommittee Members**

Cr Martin Halliday	Chair
Cr Rob Kofoed	Deputy
Mayor Janet Holborow	Member
Deputy Mayor Lawrence Kirby	Member
Cr Kathy Spiers	Member
Cr Nigel Wilson	Member
Ātiawa ki Whakarongotai (André Baker or Janine Huxford)	Member
Mr Huriwai Paki	Member
Ms Kim Tahiwī	Member
Mr Guy Burns	Member
Mr Jonny Best	Member
Mrs Jackie Elliott	Member
Ms SORCHA RUTH	Member
Mr Michael Moore	Member

## Te Raupapa Take | Order Of Business

1	Nau Mai   Welcome .....	5
2	Karakia a te Kaunihera   Council Blessing.....	5
3	Whakapāha   Apologies.....	5
4	Te Tauākī o Te Whaitake ki ngā Mea o te Rārangi Take   Declarations of Interest Relating to Items on the Agenda .....	5
5	He Wā Kōrero ki te Marea mō ngā Mea e Hāngai ana ki te Rārangi Take   Public Speaking Time for Items Relating to the Agenda .....	5
6	Ngā Take a Ngā Mema   Members' Business .....	5
7	He Kōrero Hou   Updates.....	6
7.1	Kāpiti Health Advisory Group .....	6
7.2	Reactive Maintenance – Community Facilities .....	7
8	Pūrongo   Reports.....	8
8.1	Health Strategy Direction of Travel - Council's role and proposed areas of focus .....	8
9	Te Whakaū i ngā Āmiki   Confirmation of Minutes .....	21
9.1	Confirmation of Minutes .....	21
10	Closing Karakia.....	25



**1 NAU MAI | WELCOME****2 KARAKIA A TE KAUNIHERA | COUNCIL BLESSING**

I a mātou e whiriwhiri ana i ngā take kei mua i ō mātou aroaro, e pono ana mātou ka kaha tonu ki te whakapau mahara huapai mō ngā hapori e mahi nei mātou. Me kaha hoki mātou katoa kia whaihua, kia tōtika tā mātou mahi, ā, mā te māia, te tiro whakamua me te hihiri ka taea te arahi i roto i te kotahitanga me te aroha.

“As we deliberate on the issues before us, we trust that we will reflect positively on the communities we serve. Let us all seek to be effective and just, so that with courage, vision and energy, we provide positive leadership in a spirit of harmony and compassion.”

**3 WHAKAPĀHA | APOLOGIES****4 TE TAUĀKĪ O TE WHAITAKE KI NGĀ MEA O TE RĀRANGI TAKE | DECLARATIONS OF INTEREST RELATING TO ITEMS ON THE AGENDA**

Notification from Elected Members of:

4.1 – any interests that may create a conflict with their role as an elected member relating to the items of business for this meeting, and

4.2 – any interests in items in which they have a direct or indirect pecuniary interest as provided for in the Local Authorities (Members' Interests) Act 1968

**5 HE WĀ KŌRERO KI TE MAREA MŌ NGĀ MEA E HĀNGAI ANA KI TE RĀRANGI TAKE | PUBLIC SPEAKING TIME FOR ITEMS RELATING TO THE AGENDA****6 NGĀ TAKE A NGĀ MEMA | MEMBERS' BUSINESS**

(a) Leave of Absence

(b) Matters of an Urgent Nature (advice to be provided to the Chair prior to the commencement of the meeting)

(c) Members' Items

**7 HE KŌRERO HOU | UPDATES****7.1 KĀPITI HEALTH ADVISORY GROUP**

**Author:** Anna Smith, Senior Democracy Services Advisor

**Authoriser:** Mike Mendonça, Acting Group Manager Place and Space

**TE PŪTAKE | PURPOSE**

An update from Kāpiti Health Advisory Group.

**NGĀ ĀPITI HANGA | ATTACHMENTS**

Nil

## 7.2 REACTIVE MAINTENANCE – COMMUNITY FACILITIES

Kaituhi | Author: **Kelvin Irvine, Property and Facilities Maintenance Manager**

Kaiwhakamana | Authoriser: **Mike Mendonça, Acting Group Manager Place and Space**

### TE PŪTAKE | PURPOSE

- 1 To update the Social Sustainability Subcommittee on reactive maintenance currently being undertaken on Council community facilities, and the proposed approach in the medium term.

### TAUNAKITANGA | RECOMMENDATIONS

- A. That the Social Sustainability Subcommittee notes the update.

### TŪĀPAPA | BACKGROUND

- 2 Council assets are currently experiencing a surge in reactive maintenance caused in the main by graffiti, vandalism. This happens from time to time, however there is currently a sustained spate that shows no sign of abating.

### HE TAKE | ISSUES

- 3 Graffiti and vandalism can cause residents to feel unsafe and give the impression that no-one cares about public amenities and infrastructure. In the past this has been a minor nuisance in Kāpiti, however the current level of activity is unusually high for the district. Generally, the damage is neither intelligent nor political in nature.
- 4 Response. The Council can only respond to graffiti on assets it owns. While our response is generally adequate, not all owners (public or private) are responsive. Officers continue to request all owners to deal with graffiti and tagging as quickly as possible, as this vandalism does attract other vandalism.
- 5 Officer advice is not to make public images of damage in order to minimise the notoriety of taggers.
- 6 The cost of the damage is significant.
- 7 Prevention. The root causes of vandalism, tagging and graffiti are complex in nature, and generally beyond the remit of the Council. However, we do work with Police and others in the community safety area and intend to make incremental effort in this area. Several initiatives are underway for public art and murals for hotspots.
- 8 CCTV is also under consideration for key areas.

### NGĀ MAHI PANUKU | NEXT STEPS

- 9 Subject to the Subcommittee's endorsement, Council officers propose to proceed as above.

### NGĀ ĀPITI HANGA | ATTACHMENTS

Nil

## 8 PŪRONGO | REPORTS

### 8.1 HEALTH STRATEGY DIRECTION OF TRAVEL - COUNCIL'S ROLE AND PROPOSED AREAS OF FOCUS

Kaituhi | Author: **Gina Anderson-Lister, Strategy Manager**

Kaiwhakamana | Authoriser: **Kris Pervan, Group Manager Strategy & Growth**

#### TE PŪTAKE | PURPOSE

- 1 This paper provides information on intended content for the Health Strategy on Council's role in Health and proposed areas of focus. We seek the Social Sustainability Subcommittee's feedback on the content for consideration as we draft a direction of travel document to use in public consultation.

#### HE WHAKARĀPOPOTO | EXECUTIVE SUMMARY

- 2 An executive summary is not required.

#### TE TUKU HAE PAPA | DELEGATION

- 3 The Social Sustainability Subcommittee has delegated authority to consider this under section C.1. of the 2022-2025 Triennium Governance Structure and Delegations.

#### TAUNAKITANGA | RECOMMENDATIONS

We recommend that the Social Sustainability Subcommittee:

- A. **Note** the feedback provided by Council on this content at an interactive briefing on 24 October 2023.
- B. **Provide feedback** on any additional considerations for inclusion in the 'direction of travel' document that will go to the 7 December 2023 Strategy Operations and Finance Committee for approval to engage.
- C. **Note** Council officers will engage with key stakeholders to inform the direction of travel documentation, with wider consultation to occur as part of the engagement process in early 2024.

#### TŪĀPAPA | BACKGROUND

- 4 On 9 March 2023, the Council adopted the doughnut economic model to inform its approach to assessing the needs of the people in our district. This has informed the Councillors' Priorities for 2023/24 and for the development of the 2024-25 Long-term Plan.
- 5 Health is a key aspect of this model, and the identified community need that has been incorporated into the Strategic Priorities is 'improving our overall health through access to affordable health services in our community'. The 2023/24 action notes that Council will develop a health strategy.
- 6 Council is not a direct provider of primary, secondary or specialist health services, but has a role in improving the health of the community as set by legislation. A list of relevant roles is outlined in Appendix 1 including the:
  - 6.1 Health Act 1956
  - 6.2 Local Government Act 2002
  - 6.3 Pae Ora Act 2022
  - 6.4 Water Services Act 2021



- 6.5 Building Act 2004
  - 6.6 Food Act 2014
  - 6.7 Gambling Act 2003
  - 6.8 Sale and Supply of Alcohol Act 2012
  - 6.9 Burial and Cremation Act 1964
  - 6.10 Hazardous Substances and New Organisms Act 1996
  - 6.11 Litter Act 1979
  - 6.12 Local Legislation Act 1964.
- 7 Overall, local government has a role in affecting direction set by the Director-General of Health, and ensuring there are appropriate bylaws and policies in place to support community and environmental health outcomes. Part of our role is also in facilitating collaboration of local health-related efforts, advocacy, and delivery of targeted services and regulatory actions. For example, since 2017, Kāpiti Coast District Council has been working with its community to support improvements to health service access through the advice provided by the Kāpiti Health Advisory Group (KHAG). This intention was reconfirmed by the Social Sustainability Subcommittee in September 2023, with the agreement of a refreshed terms of reference for this Group.

## HE KŌRERORERO | DISCUSSION

- 8 In a time of significant change in the health system, a local view of, and support for our community's health needs is critical to ensure our community's wellbeing, as well as to make the most of the once in a generation opportunity provided by the reforms. Through Vision Kāpiti we are receiving feedback that notes how important good access to health care and healthy environments are to our community.
- 9 Development of the Health Strategy is now well underway, noting Council's existing activity across public health areas, and formalising new activity to support better health access. As part of the development of this strategy, a 'direction of travel' document will outline the key aspects of the health strategy to support community and stakeholder engagement on the overall direction and key activities proposed. This will be completed by the end of 2023. Of note:
- 9.1 On 14 September 2023, the Social Sustainability Subcommittee received an update on the scope and direction of the Health Strategy, which will inform the development of the 'direction of travel' document.
  - 9.2 On 31 October 2023 Te Whakameninga o Kāpiti provided advice on iwi involvement in the Strategy's development. Due to the timing of reports, Council officers were not able to incorporate this feedback into this paper but it will be reflected in the process going forward.
- 10 Council officers have begun to engage with key partners, including KHAG, and to identify the various efforts and needs across our local health system: health prevention and promotion activity, primary care, hospital and specialist and community services. As a result of this work, five areas of focus are proposed:
- 10.1 Building a collective understanding of health service need, including on health status and service use
  - 10.2 Increasing focus on public health and prevention activity, which has traditionally been the key focus for Council's health related activity. Broadly, this includes:
    - 10.2.1 Water and waste management and regulatory services
    - 10.2.2 Provision and maintenance of open spaces
    - 10.2.3 Supporting community connections

- 10.2.4 Supporting environmental health
- 10.2.5 Supporting health related business in our district and providing an environment that provides good income and employment opportunities for our people
- 10.2.6 Planning for growth in our district, including in health service coverage
- 10.2.7 Ensuring housing is available that supports people's health and wellbeing
- 10.2.8 Promoting healthy activities and behaviours
- 10.3 Advocating for availability of locally provided primary and community health services.
- 10.4 Advocating for local, integrated and easy to access publicly funded hospital and specialist services.
- 10.5 Advocating for and enabling local 24/7 emergency care.
- 11 We are seeking your feedback on these areas, levers for change, and options for pathways of activity to support this; further detail is set out in Appendix 1. Councillor feedback on initial scoping from an interactive briefing with Councillors on 24 October is also documented.

### He take | Issues

- 12 One of the proposed questions to be included in the direction of travel document for engagement with stakeholders and the community relates to their view of priority across the proposed focus areas.
- 13 Final proposals will ensure Council has the ability to either implement proposed activity or advocate for an activity to occur. Views on prioritisation will support this process to inform the final document.

### Ngā kōwhiringa | Options

- 14 This paper does not propose any options for consideration.

### Mana whenua

- 15 On 31 October 2023 Te Whakameninga o Kāpiti provided advice on iwi involvement in the Strategy's development. Council officers will incorporate this into the process going forward.
- 16 We recognise the importance of iwi activity already under way within the health system's reform. This includes locally focused work in localities, which are being informed by the leadership of Iwi-Māori Partnership Boards.

### Panonitanga Āhuarangi me te Taiao | Climate change and Environment

- 17 While this paper does not have immediate consequences for Climate Change or the Environment, we acknowledge that Climate Change and Resilience and Environmental protection activity are important in:
  - 17.1 supporting the health of the environment, which underpins human health
  - 17.2 limiting the impact of climate change on human health
  - 17.3 supporting health and wellbeing in recovery from severe weather events
- 18 Transport also has an impact on people's access to health services. Better public transport will reduce the need for using private vehicles to attend critical health care services, which aligns with Council's climate-related aims.

### Ahumoni me ngā rawa | Financial and resourcing

- 19 There are no direct financial or resourcing implications from this paper. The Long-Term Plan proposals currently have provision for the delivery of the Health Strategy. Implementation planning will be important to ensure there is resource to deliver on the Strategy.

**Tūraru ā-Ture me te Whakahaere | Legal and Organisational Risk**

- 20 There are no significant legal or organisational risks to raise from this paper. The implications of health reform for our district are part of Organisational Risk 6 in Council's top 10 organisational risk. Delivering and implementing the strategy will support the mitigation of this risk.

**Ngā pānga ki ngā kaupapa here | Policy impact**

- 21 Once adopted, the Health Strategy will be part of a suite of 5 operating strategies for Council. These represent pathways and the direction of key activity to address thematic issues that will help us achieve our collective future aspirations. This means that they will be used to inform other work across Council, including in the policy space.

**TE WHAKAWHITI KŌRERO ME TE TŪHONO | COMMUNICATIONS & ENGAGEMENT****Te mahere tūhono | Engagement planning**

- 22 As part of Vision Kāpiti engagement with the community starting in August 2023, we have been seeking people's views on what they are concerned about regarding health services, and what can be done to help our people lead healthy lives. This engagement continues until June 2024, and will deliver a view of the aspirations of our community that will deliver a changed Kāpiti by 2060.
- 23 Council officers have also talked to some key stakeholders about the Health Strategy development, including how it will be informed by the feedback received through Vision Kāpiti. We will discuss key focus areas with key stakeholders prior to the finalisation of the direction of travel documentation in December 2023.
- 24 The intention is to engage with a greater range of stakeholders and the community in early 2024 on the direction of the Health Strategy using the direction of travel document. This will inform the shape of the Strategy, which will be adopted by the end of June 2024.

**Whakatairanga | Publicity**

- 25 Publicity will be across the range of channels currently being used as part of the Vision Kāpiti work programme.

**NGĀ ĀPITI HANGA | ATTACHMENTS**

1. Overview of Council's Role, Areas of focus and questions for engagement [↓](#)

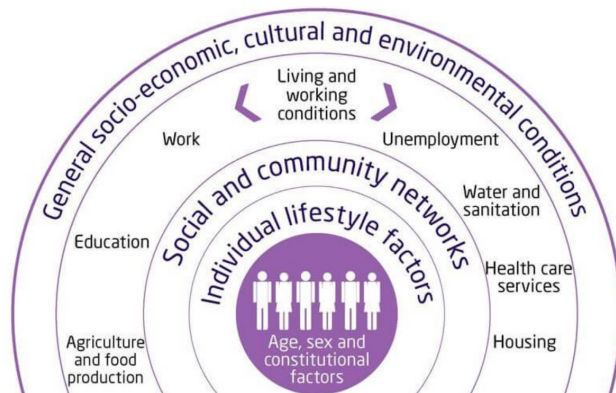
# Health Strategy Direction of Travel

Council's Role, Areas of Focus and  
questions for consultation

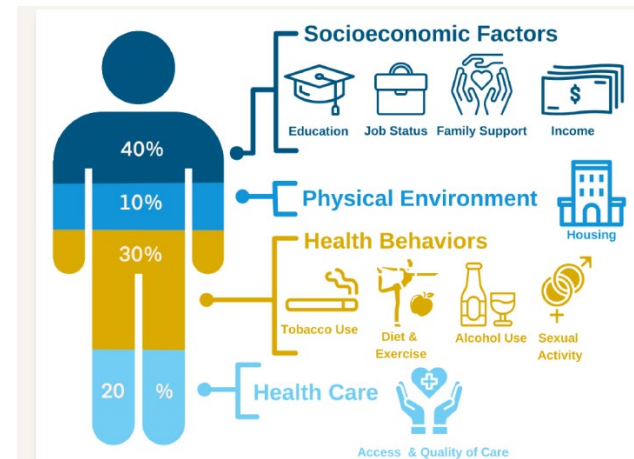


# What is Council's role in Health?

- The Local Government Act 2002's purpose is broad, and determines that local authorities should maintain a role in understanding the general wellbeing of their communities across the 4 specified domains; cultural, social, economic and environmental.
- This also aligns with holistic frameworks of health and wellbeing, that note that a person is not truly healthy, without wellbeing across many domains of life and 'social determinants of health'. These are the conditions that influence health outcomes overall.



Source: Dahlgren, G. and Whitehead, M. (1993) Tackling inequalities in health: what can we learn from what has been tried?



## What is Council's role in Health?

- Legislation mandates Council's Role in public health related services, many of which influence the social determinants of health
- The Health Strategy Direction of Travel Document will outline Council's existing activity in this space.

Legislation	Role
Local Government Act 2002 [Sections 145, 147(2)]	Promoting social, economic, environmental, and cultural wellbeing. Allows for power to make bylaws to protect, promote and maintain public health and safety.
Health Act 1956 [Sections 23, 25, 81, 86]	Provide sanitary works; waste disposal, water and sewage, public toilets and related facilities, pools, dressing sheds, cemeteries and crematoria, collection and disposal of refuse and offensive matter, regulation of housing (healthy), and disinfecting and cleansing premises where directed by the Director General of Health.
Pae Ora Act 2022 [Section 55]	Locality planning.
Water Services Act 2021 [Section 21 and 22]	Fulfil responsibilities as drinking water supplier to maintain drinking water to national standard and provide sanitary, wastewater and stormwater services to good quality.
Building Act 2004 [Section 222]	Provide for public safety in relation to building consents and inspections including in relation to dangerous or unsanitary buildings
Food Act 2014 [Section 4, and 176]	Regulatory activities relating to food safety
Burial and cremation Act 1964 [Section 4]	Burial services, and maintenance of cemeteries.
Litter Act 1979 [Sections 10 and 11]	Litter control including grants, schemes, and campaigns.
Hazardous Substances and New Organisms Act 1996	Regulatory and enforcement activity relating to hazardous substances
Sale and Supply of Alcohol Act 2012 [Sections 75, 99, 186, and 196]	Ability to make Local Alcohol Policy of the supply of alcohol and appointment of district licensing committees and licensing inspectors
Gambling Act 2003 [Section 102]	Ability to make local policy on class 4 gambling venues





## What is Council's role in Health?

- Since at least 2017, Kāpiti Coast District Council has also recognised its responsibility to work with health providers in our district to influence the how and where health care is provided in our district, to affect the estimated 20% of outcomes influenced by these factors.
- The Health Strategy Direction of Travel Document will formalise Council's choices regarding its role in this space.
- At an interactive briefing with Council on 24 October, we asked for feedback on the areas of focus on this in particular, to incorporate into our direction of travel.



## Areas of Focus

Focus Area	Activity	Impacts	Outcome shifts
Building understanding	Partner for data and info	Kapiti health ecosystem working effectively together	Comprehensive understanding community needs
	Community Survey		
Public health and prevention	Social needs assessment	Social needs assessment informs health focus	Social determinants of health and public health issues are managed
	Ensure continued activity across the public health and prevention services provided by council (further detail on next page)	Preventable health issues are mitigated	
Support increased availability of locally provided primary and community health services	Economic development focuses on attracting health businesses	More health businesses start up in Kapiti	Increased local provision of services Increased availability of services locally
	Advocate for services to be contracted to be delivered locally	Te whatu ora allocated service and resource increases	
Advocate for locally provided, integrated secondary health services, and easy access to these services where people need to travel.	Work with Te Whatu Ora on service provision	Barriers to accessing secondary services are reduced	Accessible and integrated hospital services that meet future need
Advocate for and enable locally based after hours, urgent and emergency services available 24/7.	Work with Te Whatu Ora and after-hours and emergency providers	Barriers to accessing emergency and after-hours services are reduced	24/7 urgent and emergency care services in our community



## Areas of focus – existing public health activity

Activity area	Activity focus	Desired outcomes
Water and waste management services and regulatory services	Manage drinking water and waste, or affordable waters transition	Ensure continued protection from hazards
Open Spaces	Provide and maintain open spaces	Support active lives and connection
Connected communities	Support community connection activities especially for youth and older people	Support social interaction and support
Environment/Climate and Resilience	<ul style="list-style-type: none"> <li>• Deliver against environmental protection activities</li> <li>• Deliver action to mitigate and adapt to climate change</li> <li>• Ensure resilience and recovery planning following emergency response situations</li> </ul>	<ul style="list-style-type: none"> <li>• Support health of the environment underpinning human health</li> <li>• Limit impact of climate change on human health</li> <li>• Support health and wellbeing in recovery</li> </ul>
Transport	<ul style="list-style-type: none"> <li>• Ensure transport enables access to health services</li> <li>• Support active transport options</li> </ul>	<ul style="list-style-type: none"> <li>• Ensure people are able to access the services they need within and outside of the district</li> <li>• Promote healthy lifestyles</li> </ul>
ED/Income and employment	<ul style="list-style-type: none"> <li>• Take action to support fulfilling employment options and good incomes in the district</li> </ul>	<ul style="list-style-type: none"> <li>• Enable wellbeing and ability to make healthy choices</li> </ul>
Growth	<ul style="list-style-type: none"> <li>• Support good growth and planning for future health service need in the district</li> </ul>	<ul style="list-style-type: none"> <li>• Ensure provision of adequate health service over time</li> </ul>
Housing	<ul style="list-style-type: none"> <li>• Ensure availability of range of affordable housing types</li> <li>• Ensure housing is good quality</li> </ul>	<ul style="list-style-type: none"> <li>• Ensure people have homes that provide healthy environments and wellbeing</li> </ul>
Healthy activities	<ul style="list-style-type: none"> <li>• Education and promotion of healthy lifestyles with National Public health Service</li> <li>• Ensure local alcohol, gambling and smoke/vapefree policies and other bylaws support and promote healthy choices</li> </ul>	<ul style="list-style-type: none"> <li>• Enable people to make choices that support healthy lives and wellbeing</li> </ul>

## What we heard from Councillors at the interactive briefing on 24 Sept

- Good support for what is there already
- More detail on prevention and existing activities and focus on wellbeing more holistically
- More emphasis on good future planning, including looking inter-district and regionally
- Describe our advocacy role well – how will we ensure this is effective. Targeted, relationship based, supported with data and information, giving good oversight
- Working with our partners in the process is important – engage with iwi, utilise those with knowledge well (including KHAG, and Ōtaki partners such as OHWAG and social services on addressing border issues)
- Include more detail on some specific topics within focus areas - eg mental health for young people, rehabilitation facilities/step down beds, follow up on hospital petition activity
- Include consideration of facilities we might be able to provide to enable services in our area



# Questions to ask in our Direction of Travel consultation

We will ask the community and stakeholders:

- Have we reflected the key issues faced by and aspirations of our community well? Is there anything missing?
- Are the areas of focus the right ones to resolve issues and meet our community's aspirations?
- What actions or areas of focus do you think are the highest priority?



## Final question

- Is there anything else you would like to see reflected in this material?
- Are there any other questions you would like us to ask the community in the direction of travel consultation process?



**9 TE WHAKAŪ I NGĀ ĀMIKI | CONFIRMATION OF MINUTES****9.1 CONFIRMATION OF MINUTES**

**Author:** Anna Smith, Senior Democracy Services Advisor

**Authoriser:** Mike Mendonça, Acting Group Manager Place and Space

**Taunakitanga | Recommendations**

That the minutes of the Social Sustainability Subcommittee meeting of 12 October 2023 be accepted as a true and correct record.

**NGĀ ĀPITI HANGA | ATTACHMENTS**

1. Social Sustainability Subcommittee minutes - 12 October 2023 [↓](#)

**SOCIAL SUSTAINABILITY SUBCOMMITTEE MEETING MINUTES****12 OCTOBER 2023**

**MINUTES OF THE KĀPITI COAST DISTRICT COUNCIL  
SOCIAL SUSTAINABILITY SUBCOMMITTEE MEETING  
HELD IN THE COUNCIL CHAMBER, GROUND FLOOR, 175 RIMU ROAD, PARAPARAUMU  
ON THURSDAY, 12 OCTOBER 2023 AT 9.31AM**

**PRESENT:** Cr Martin Halliday (Chair), Cr Rob Kofoed, Cr Kathy Spiers, Mayor Janet Holborow (via Zoom), Deputy Mayor Lawrence Kirby, Cr Nigel Wilson, Guy Burns, Jonny Best, Kim Tahiwai (via Zoom), Jackie Elliott, Huriwai Paki (via Zoom)

**IN ATTENDANCE:** Mike Mendonça, Hara Adams, Kris Pervan, Sarah Wattie (via Zoom), Claire Winter, Donna Creary, Gareth Eloff, Darryn Grant, Steven Cross, Morag Taimalietane, Trevor Jackson, Lynne McMillan, Jennifer McKenzie, Anna Smith, Jessica Mackman, Evan Dubisky

**WHAKAPĀHA | APOLOGIES:** Michael Moore, Sorcha Ruth

**LEAVE OF ABSENCE:** Nil

**1 NAU MAI | WELCOME**

The Chair welcomed everyone to the meeting.

**2 KARAKIA A TE KAUNIHERA | COUNCIL BLESSING**

The Chair invited Deputy Mayor Lawrence Kirby to read the Council blessing.

Cr Nigel Wilson entered the meeting at 9:33am

**3 WHAKAPĀHA | APOLOGIES**

**APOLOGY**

**COMMITTEE RESOLUTION SSS2023/25**

Moved: Cr Nigel Wilson

Seconder: Deputy Mayor Lawrence Kirby

That the apologies received from Michael Moore and Sorcha Ruth be accepted.

**CARRIED**

**4 TE TAUĀKĪ O TE WHAITAKE KI NGĀ MEA O TE RĀRANGI TAKE |  
DECLARATIONS OF INTEREST RELATING TO ITEMS ON THE AGENDA**

## SOCIAL SUSTAINABILITY SUBCOMMITTEE MEETING MINUTES

12 OCTOBER 2023

**5 HE WĀ KŌRERO KI TE MAREA MŌ NGĀ MEA E HĀNGAI ANA KI TE RĀRANGI TAKE | PUBLIC SPEAKING TIME FOR ITEMS RELATING TO THE AGENDA****6 NGĀ TAKE A NGĀ MEMA | MEMBERS' BUSINESS**

- (a) There were no Leaves of Absence requested.
- (b) There were no Matters of an Urgent Nature raised with the Chair prior to the commencement of the meeting.
- (c) Members' Items was postponed to the end of the meeting

**7 HE KŌRERO HOU | UPDATES****7.1 OLDER PERSONS' HOUSING - ASSET MANAGEMENT PLAN**

Mike Mendonça, Acting Group Manager Place & Space, Claire Winter, Contractor, and Donna Creary, Acting Property & Facilities Manager, presented an update and along with other members of the Property Team answered questions from members.

Jackie Elliott entered the meeting at 9:48am.

Huriwai Paki joined the meeting via Zoom at 9:51am.

**COMMITTEE RESOLUTION SSS2023/26**

Moved: Cr Kathy Spiers

Seconder: Cr Rob Kofoed

That the Subcommittee note the update.

That the Subcommittee note that a formal asset management plan will be presented for approval to the October Strategy, Operations and Finance Committee.

**CARRIED**

**7.2 CEMETERIES - ASSET MANAGEMENT PLAN**

Mike Mendonça, Acting Group Manager Place & Space, Claire Winter, Contractor, and Trevor Jackson, Team Leader Parks & Outdoor Recreation, presented an update and answered questions from members.

Huriwai Paki left the meeting at 11:00am.

Cr Rob Kofoed left the meeting at 11:07 am.

Cr Rob Kofoed returned to the meeting at 11:09 am.

**COMMITTEE RESOLUTION SSS2023/27**

Moved: Cr Nigel Wilson

Seconder: Cr Kathy Spiers

That the Subcommittee note the update.

That the Subcommittee note that a formal asset management plan will be presented for approval to the November Strategy, Operations and Finance Committee.

**CARRIED**

**SOCIAL SUSTAINABILITY SUBCOMMITTEE MEETING MINUTES****12 OCTOBER 2023**

The meeting adjourned at 11:10 am and resumed at 11:20 am.

Guy Burns left the meeting at 11:20am.

**8 TE WHAKAŪ I NGĀ ĀMIKI | CONFIRMATION OF MINUTES****8.1 CONFIRMATION OF MINUTES FROM 14 SEPTEMBER 2023****COMMITTEE RESOLUTION SSS2023/28**

Moved: Cr Nigel Wilson

Seconder: Cr Kathy Spiers

That the minutes of the Social Sustainability Subcommittee meeting of 14 September 2023 be accepted as a true and correct record.

**CARRIED**

**6 NGĀ TAKE A NGĀ MEMA | MEMBERS' BUSINESS**

(c) Members' Business:

- The Chair advised that he wants to line up councillors with different areas of interest to the subcommittee and invited Deputy Mayor Lawrence Kirby to speak on any updates in the social and community sector.
- Deputy Mayor Kirby provided an update and declared a conflict of interest in the space. Deputy Mayor Kirby and Morag Taimalietane, Principal Advisor, People and Partnerships, answered members' questions. Members discussed funding for community groups.

Mrs Jackie Elliott left the meeting at 11:37 am.

Mrs Jackie Elliott returned to the meeting at 11:39 am.

Mayor Janet Holborow left the meeting at 11:48 am.

- Jackie Elliott discussed how elected members are involved in community groups, the lack of funding given the level of involvement, and a meeting with the Remuneration Authority to look at funding and participation.
- Jonny Best advised that Kāinga Ora is developing a community liaison group with Raumati, and the potential for community board involvement.

**9 CLOSING KARAKIA**

The Chair closed the meeting with karakia.

**The Te Komiti Whāiti Toitūtanga Pāpori | Social Sustainability Subcommittee meeting closed at 12:00.**

.....  
**HEAMANA | CHAIRPERSON**



**10 CLOSING KARAKIA**