



RĀRANGI TAKE AGENDA

Te Komiti Whāiti Āhuarangi me te Taiao | Climate and Environment Subcommittee Meeting

**I hereby give notice that a Meeting of the Te Komiti Whāiti Āhuarangi
me te Taiao | Climate and Environment Subcommittee will be held on:**

Te Rā | Date: Tuesday, 19 September 2023

Te Wā | Time: 9.30am

**Te Wāhi | Location: Council Chamber
Ground Floor, 175 Rimu Road
Paraparaumu**

**James Jefferson
Group Manager Regulatory Services**

Kāpiti Coast District Council

Notice is hereby given that a meeting of the Te Komiti Whāiti Āhuarangi me te Taiao | Climate and Environment Subcommittee will be held in the Council Chamber, Ground Floor, 175 Rimu Road, Paraparaumu, on Tuesday 19 September 2023, 9.30am.

Te Komiti Whāiti Āhuarangi me te Taiao | Climate and Environment Subcommittee Members

Cr Jocelyn Prvanov	Chair
Cr Sophie Handford	Deputy
Mayor Janet Holborow	Member
Cr Glen Cooper	Member
Cr Liz Koh	Member
Cr Shelly Warwick	Member
Mr Huriwai Paki	Member
Ātiawa ki Whakarongotai (André Baker or Janine Huxford)	Member
Mr Christian Judge	Member
Mr Michael Moore	Member
Mr Glen Olsen	Member
Mr Tim Sutton	Member
Mr Simon Black	Member
Ms Janine Huxford	Member
Ms Kim Tahiwī	Member

Te Raupapa Take | Order Of Business

1	Nau Mai Welcome	5
2	Karakia a te Kaunihera Council Blessing.....	5
3	Whakapāha Apologies.....	5
4	Te Tauākī o Te Whaitake ki ngā Mea o te Rārangī Take Declarations of Interest Relating to Items on the Agenda	5
5	He Wā Kōrero ki te Marea mō ngā Mea e Hāngai ana ki te Rārangī Take Public Speaking Time for Items Relating to the Agenda	5
6	Ngā Take a Ngā Mema Members' Business	5
7	He Kōrero Hou Updates.....	6
7.1	Update - Climate Change and Resilience Strategy, and Environment Strategy.....	6
7.2	Update on Legislation - new RMA legislation	30
7.3	Waste Management and Minimisation Plan (2023-2029) - Consultation Summary.....	31
7.4	Implementation of Plan Change 2	32
7.5	Destination Parks - Asset Management Plan	33
8	Te Whakaū i ngā Āmiki Confirmation of Minutes	35
8.1	Confirmation of Minutes	35
9	Closing Karakia.....	40

1 NAU MAI | WELCOME

2 KARAKIA A TE KAUNIHERA | COUNCIL BLESSING

I a mātou e whiriwhiri ana i ngā take kei mua i ō mātou aroaro, e pono ana mātou ka kaha tonu ki te whakapau mahara huapai mō ngā hapori e mahi nei mātou. Me kaha hoki mātou katoa kia whaihua, kia tōtika tā mātou mahi, ā, mā te māia, te tiro whakamua me te hihiri ka taea te arahi i roto i te kotahitanga me te aroha.

“As we deliberate on the issues before us, we trust that we will reflect positively on the communities we serve. Let us all seek to be effective and just, so that with courage, vision and energy, we provide positive leadership in a spirit of harmony and compassion.”

3 WHAKAPĀHA | APOLOGIES

**4 TE TAUĀKĪ O TE WHAITAKE KI NGĀ MEA O TE RĀRANGI TAKE |
DECLARATIONS OF INTEREST RELATING TO ITEMS ON THE AGENDA**

Notification from Elected Members of:

4.1 – any interests that may create a conflict with their role as an elected member relating to the items of business for this meeting, and

4.2 – any interests in items in which they have a direct or indirect pecuniary interest as provided for in the Local Authorities (Members' Interests) Act 1968

**5 HE WĀ KŌRERO KI TE MAREA MŌ NGĀ MEA E HĀNGAI ANA KI TE RĀRANGI
TAKE | PUBLIC SPEAKING TIME FOR ITEMS RELATING TO THE AGENDA**

6 NGĀ TAKE A NGĀ MEMA | MEMBERS' BUSINESS

(a) Leave of Absence

(b) Matters of an Urgent Nature (advice to be provided to the Chair prior to the commencement of the meeting)

7 HE KŌRERO HOU | UPDATES

7.1 UPDATE - CLIMATE CHANGE AND RESILIENCE STRATEGY, AND ENVIRONMENT STRATEGY

Kaituhi | Author: **Doug Simpson, Principal Advisor, Strategy**

Kaiwhakamana | Authoriser: **Kris Pervan, Group Manager Strategy & Growth**

TE PŪTAKE | PURPOSE

- 1 This report seeks the Climate and Environment Subcommittee's (CES) feedback and endorsement of the proposed scope, principles, and priorities for the Climate Change and Resilience Strategy, and the Environment Strategy; and attaches a presentation which will be discussed at the CES meeting.

TAUNAKITANGA | RECOMMENDATIONS

That the Climate and Environment Subcommittee:

- A. **Note** the contents of this update report.
- B. **Provide feedback** and **endorse** in principle the scope, principles and priorities for the Climate Change and Resilience Strategy.
- C. **Provide feedback** and **endorse** in principle the scope, principles and priorities for the Environment Strategy.
- D. **Recommend** that Council officers attend Te Whakaminenga o Kāpiti at the end of October 2023 to ensure collaboration with our iwi partners, in their role as Kaitiaki of the environment, on the proposed scope, principles and priorities for the respective strategies.
- E. **Recommend** that following incorporation of feedback from this Committee and mana whenua, that the Strategy Operations and Finance Committee adopt the scope, principles and priorities for the Climate Change and Resilience Strategy, and Environment Strategy.
- F. **Note** the high-level time for work set out in Appendix One including engagement with the Climate Change and Resilience Community Think Tank that is anticipated to be stood up.

TŪĀPAPA | BACKGROUND

- 2 In May 2019 the Kāpiti Coast District declared a climate emergency and in July 2021 adopted a climate emergency framework to set out a response to this declaration.
- 3 In March 2023, in a briefing on developing a Climate Change and Resilience Strategy, Councillors agreed that it would be useful to establish a Climate Change and Resilience Community 'Think Tank' - a local citizen and community advisory group, interested and engaged in climate matters to support the development of this work. Work is progressing to stand up the Think Tank, with the first meeting anticipated to be held in October.
- 4 On 13 July the Strategy, Operations, and Finance Committee endorsed changes to the Policy Work Programme to include the development of two new strategies: the Climate Change and Resilience Strategy, and the Environment Strategy. Work on these strategies will be progressed through to December 2023, following which we anticipate seeking community feedback through the Kāpiti Vision Engagement Hub in February 2024 before both strategies are finalised in May 2024. Officers will be discussing the scope, principles and priorities for each strategy with CES between September to November 2023,
- 5 On 18 July Council Interactive Briefing session, officers ran a workshop with Council to scope out the purpose, role, and membership for the Climate Change and Resilience Community Think Tank. Officers are now reporting back to CES 19 September meeting on how the outcomes of these conversations have informed the scope, principles, and priorities for each strategy. The intention is to get CES's feedback and agreement to progress both

strategies. This will enable officers to draft and present a Direction of Travel document for both strategies for consideration at CES 7 November, and for Strategy, Operations, and Finance Committee in December to approve for public consultation. Both strategies will be supported by a separate action plan.

HE TAKE | ISSUES

6 No issues to report

NGĀ KŌWHIRINGA | OPTIONS

Kōwhiringa Options	Hua Benefits	Tūraru Risks
Option A (being taken forward) <ul style="list-style-type: none"> Develop high level strategies with separate action plans 	<p>Provides a flexibility to remain current and relevant. The Strategy documents provide a strategic direction with a clear vision, objectives, and pathways to success over the medium to long-term (10+ years).</p> <p>The action plans will be short punchy documents setting out specific priority activities for each triennium. They will be updated every 1-2 years.</p>	<p>Potential for disconnect between strategy and action.</p> <p>Risk mitigation – Separate climate action plan already exists to align with Climate and Resilience Strategy.</p>
Option B <ul style="list-style-type: none"> Develop fully integrated strategy and action plan 	<p>Everything all in one consolidated document</p>	<p>Council is potentially locked into a static document that doesn't reflect current trends or approaches to effectively respond to a changing climate and improve our environment.</p> <p>Higher cost approach requiring more upfront work, rather than phased engagement and implementation.</p>

NGĀ MAHI PANUKU | NEXT STEPS

- Officers will incorporate CES feedback into the development of the draft strategy Direction of Travel documents and will report back to CES in November.
- Council officers will engage our iwi partners - Ātiawa ki Whakarongotai Charitable Trust, Ngā Hapū o Ōtaki and Te Rūnanga o Ngāti Toa Rangatira - on the proposed scope, principles and priorities for the Climate Change and Resilience Strategy, and Environment Strategy through Te Whakaminenga o Kāpiti at the end of October 2023.

NGĀ ĀPITI HANGA | ATTACHMENTS

- Appendix 1 - Strategies update [↓](#)

Strategy development:

- **Climate Change and Resilience**
- **Environment Strategy**

Climate and Environment
Sub-Committee
19 September 2023



What we're doing today

- Setting out our approach for developing the Climate and Resilience Strategy, and for the Environment Strategy.
- Outlining how we've translated Council engagement to date into developing both strategies - scope, priorities, principles.
- Seeking your endorsement to progress the development of a Direction of Travel document, which will be used to engage the community on the core substance of the Climate and Resilience Strategy, and for the Environment Strategy.in February 2024.

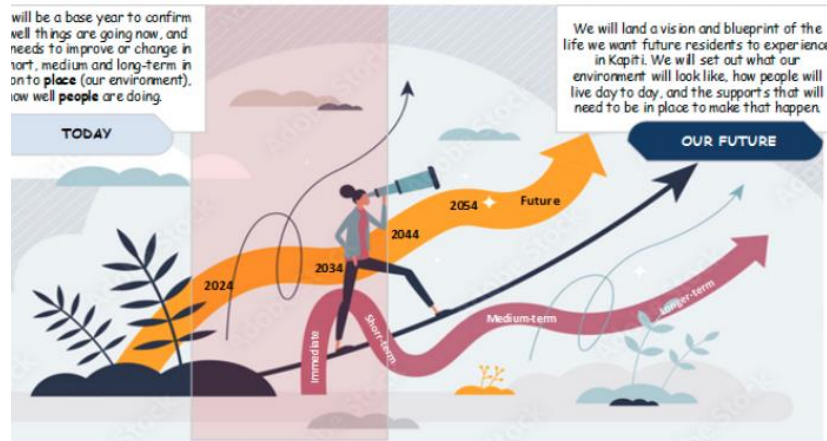
Note:

We plan to separately and directly engage with mana whenua through Te Whakaminenga o Kāpiti at the end of October 2023. This is to ensure a collaborative approach is taken to co-design these strategies, and to acknowledge the role of our iwi partners as kaitiaki of the environment.

Recap – our mandate

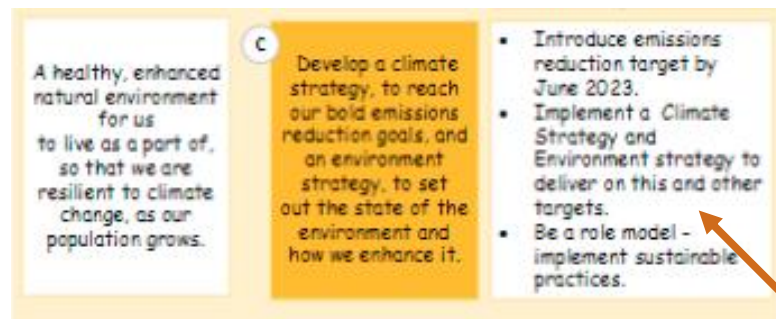


CHARTING A SUSTAINABLE AND AFFORDABLE COURSE FOR THE FUTURE TOGETHER



The vision at the heart of our Climate Emergency Action Framework is a thriving, vibrant and strong Kapiti that has reduced its carbon footprint significantly, transitioned to a low-carbon future, and prepared for challenges and opportunities that come from responding to the climate crisis.

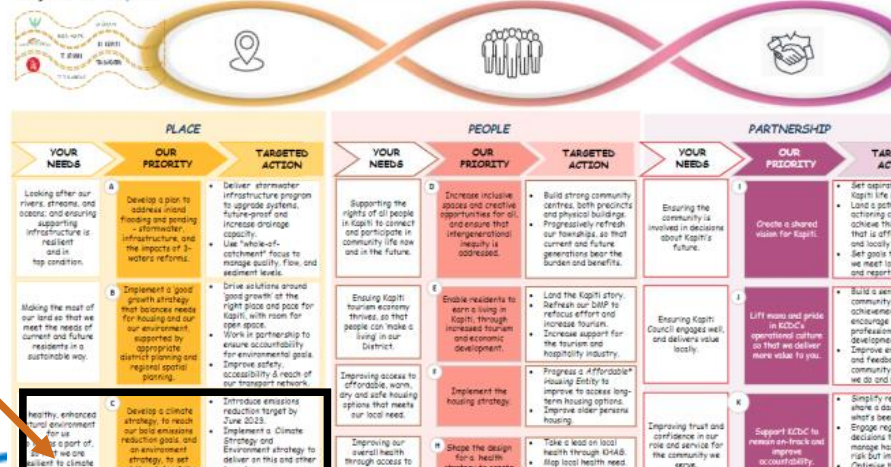
Outcomes framework



DRIVING AFFORDABLE, FOCUSED STRATEGIC CHANGE: KAPITI COUNCIL'S 'TOP 10' FOR 2023/24

As your elected representatives, we will take action on the things that matter most to you. As we head Annual Plan for 2023/24, we will tighten our belt due to the tough economic times. We are committed delivering the 'top 10' things that matter to you, annually to get the job done. But we want to make sure the mark for you - feedback is welcomed on whether we have this list right. Ultimately, we want our support you, our businesses, community and environment to thrive no matter what comes our way.

Working with our mana whenua partners:



What Council told us to July Interactive Brief.

Climate & Resilience Strategy

Key themes – adaptation (especially resilient infrastructure), mitigation, transition, and recovery (managing for the impact of climate change, such as severe weather events).

Key areas to focus on	Role of Council (and others)
<ul style="list-style-type: none"> • Resilient infrastructure (ie. stormwater, roads, accessways, community assets, business continuity) • Recovery with resilient emergency response hubs and effective business and community support post severe weather events (that's recovery) • Mātauranga Māori • Knowing what's coming so that we can prepare (ie. flood risk modelling, growth protections) • Land use planning driving effective climate action, an area specific approach. Carefully managed retreat in high-risk areas (this is preparedness) • Need to also reduce carbon footprint • Enabling people to live locally, if they want to (walking neighbourhoods) • Active transport and optimising Cycleways, Walkways, and Bridle Way assets • Waste and consumption – transition to low carbon circular economy 	<ul style="list-style-type: none"> • Ensuring effective climate emergency response (and recovery) capability and capacity • Acquiring land to support managed retreat (if we can afford it) • Facilitator role for education and training • Communicating to our community where we are at and what's needed (now and if something happens – recovery) • Leading by example to reduce corporate emissions • Advocacy to government for sufficient resourcing and funding • Food security and self-sufficiency • Supporting community climate action • GWRC role- improved rail and bus infrastructure • Keeping people safe, effective emergency response • Planning how our District is spatially set out through our policy settings including District Plan rules and bylaws to manage for climate

What Council told us: Environment Strategy

Key themes – protect, maintain, restore our natural environment and prepare for managing the impact of natural disasters. Balance with pop’n growth.

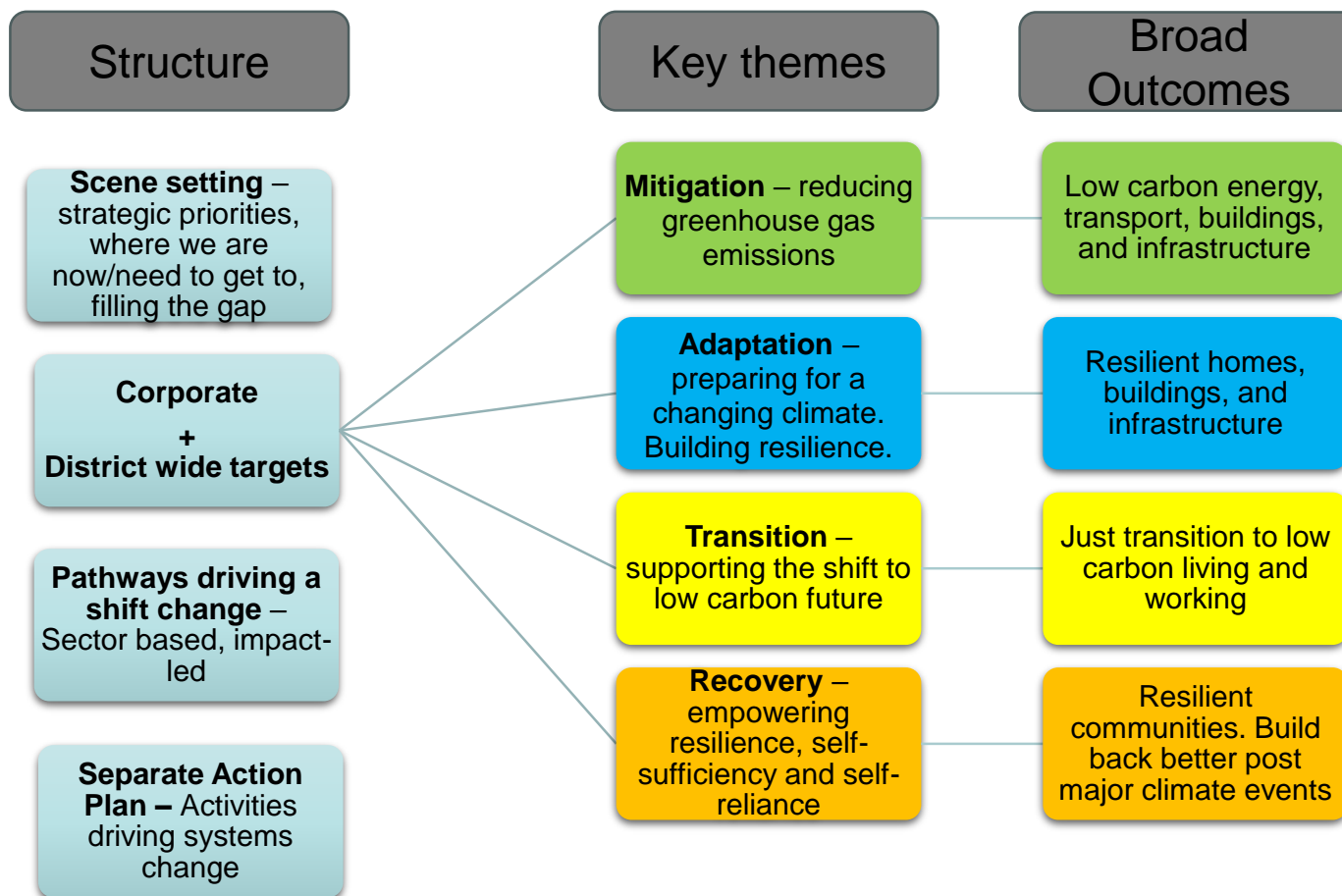
Key areas to focus on	Role of Council (and others)
<ul style="list-style-type: none"> • Scope is from mountains to the sea (including wetlands, forests, soil health, Cycleways, Walkways and Bridle Ways network, coastline, rivers, lakes, aquifers) • Mana Whenua views • Consider impact and response to growth, litter, and pollution • Identify links to other strategies (e.g. Health Strategy and Growth Strategy) • Community-led stewardship and connectivity • Influencing our District Plan to drive better environmental health outcomes 	<ul style="list-style-type: none"> • Education • Acquiring land in need of environmental protection (if we can afford it) • Establish a dashboard on the health of our environment • Leading by example • Advocacy and calling on government to provide funding and support • Role of other government departments and key partners (e.g. GWRC, Kainga Ora, etc) • Talk to our communities about what they want/need to ensure environmental health and our resilience to natural disasters • Planning how our District is spatially set out through our policy settings including District Plan rules and bylaws to manage for natural hazards and risks, and to maintain the health of our environment

Climate Change and Resilience Strategy'

Scope, Principles, and Priorities



Scope



Principles

Strategic/corporate principles

- [Climate Action Emergency Framework Principles](#)
- People, Place, Partnership
- Promoting the four well-beings
- Applying the Outcomes framework (also in development)
- Lead by example – demonstrate how we thread climate action through everything we do

Other principles

- Vision-led values based – everyone deserves a warm, dry, safe home
- Affordably committing funding and support
- Thriving in balance (good growth)
- Just transition – no one gets left behind (not just for the well off), but there is choice.
- Right activity in the right place

Principles

Strategic/corporate principles

- [Climate Action Emergency Framework Principles](#)
- People, Place, Partnership
- Promoting the four well-beings
- Applying the Outcomes framework (also in development)
- Lead by example – demonstrate how we thread climate action through everything we do

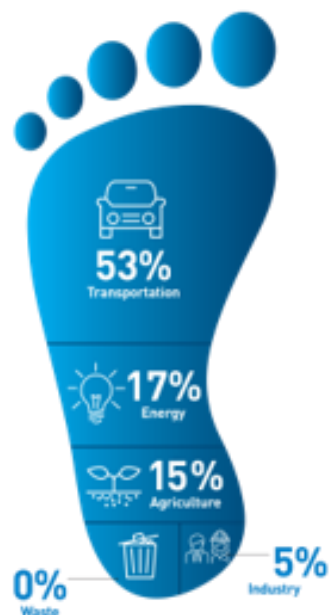


Principles

The summarised principles of the framework are:

1. Support Toitū Kāpiti and climate change emergency, and take action using available science.
2. Honour Te Tiriti o Waitangi and our partnership with Mana Whenua,.
3. Meet our climate change-related statutory obligations.
4. Inclusive and transparent decision-making based on ongoing collaboration and consultation.
5. Decisions underpinned by best practice and lessons from others.
6. Sustainability, resilience, and climate change-related work is integrated and coordinated across Council.
7. Participate in government reforms of national policy and legislation – particularly around climate change mitigation, adaptation and the Resource Management Act 1991 (RMA).
8. Advocate for policies and programmes that support the Toitū Kāpiti vision, and actively look for funding opportunities.
9. Take opportunities to lead, facilitate and empower community projects and initiatives that will build sustainability, resilience, and green innovation.

Priorities



Now 2022-2024
Acting now.
Delivering what's
underway

Build capacity –
embedding climate
change thinking into
everything we do

Set ambition -
Corporate and DW
targets. Emissions
reduction
pathways roadmap

Ramp up – activity on
our emission reduction
and infrastructure
projects

Planning – our recovery
with the community from
major climate events

Next 2025-2032
Accelerating Action

Scale up – public and active
transport modes, encourage
wide use

Phasing out – fossil fuels.
Retrofitting & constructing low
carbon buildings

Building
resilient infrastructure and
connected communities. Right
activity right place.

Widespread – change in
mindsets, systems and
behaviour to low carbon living

Prepare – set up the
framework for recovery from
major events now, including
relationship and funding
options

Later 2033-2050
Delivering for the
future

Living well locally –
dense developments
connecting with
multiple transport
modes and amenities

Thriving in balance –
high growth low carbon
living and industry

Strengthening -
infrastructure and
community resilience

Building back better –
after major climate
events


Kāpiti Coast

Example: target sectors & pathways

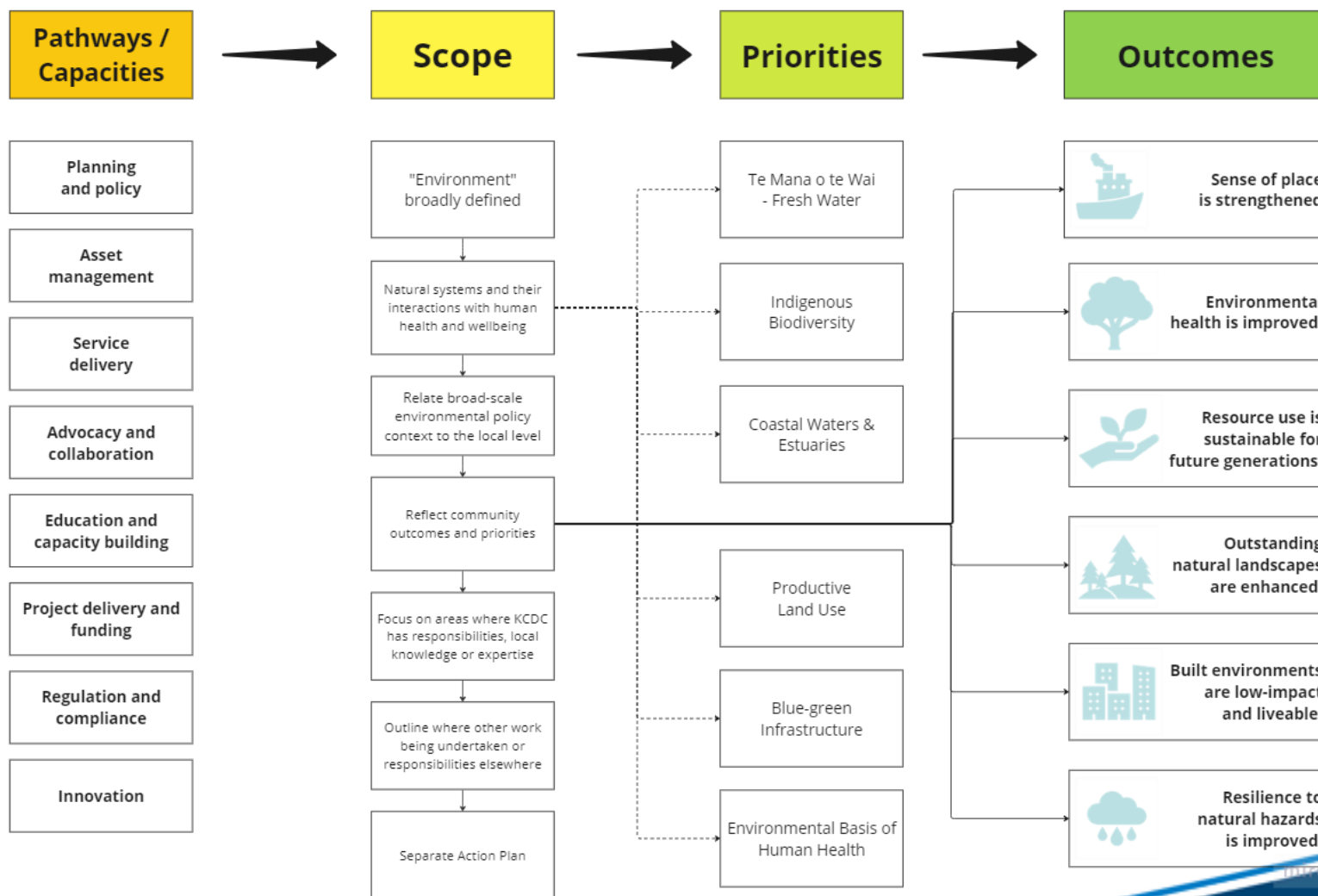
Leading by example	Target sectors	Pathways	Education. Advocacy. Holistic view.
	Transport	More walking, cycling and public transport. Electric Vehicles. Reduce private vehicle use	
	Energy and Buildings	Improving energy efficiency. Renewable energy. Low carbon construction.	
	Consumption and Waste	Reducing consumption and waste. High recycling. Transition to circular economy.	
	Landuse and future planning	Low carbon neighbourhoods. Right activity in the right place. Planning for heatwaves, flooding and sea-level rise. Sequestration. Low carbon farming.	
	Industry	Supporting low carbon industry. Thriving in balance.	
	Recovery (post major climate events)	Community resilience. Business continuity. Self-sufficiency and self-reliance – food, water, energy.	
	Natural assets	Connecting with our natural world. Planting forests. Restoring and protecting natural areas and biodiversity	

Environment Strategy

Scope, Principles, and Priorities



Scope



Principles

Protect and restore	Protect and restore natural systems and ecosystem services.
Lead	Provide leadership, that is positive, pragmatic and proactive.
Support	Support participation and collaboration, to build capacity and enhance community connections.
Resilience	Build resilience to natural hazards and environmental challenges - prepare now (don't wait until an issue emerges), implement options to support communities to thrive, and explore opportunities for innovation which help to not only improve environmental outcomes but health, employment and wellbeing outcomes as well..

Priority Themes

Te Mana o te Wai –
Fresh Water

Indigenous
biodiversity

Coastal waters and
estuaries

Productive land use

Blue-green
infrastructure

Environmental basis
of human health

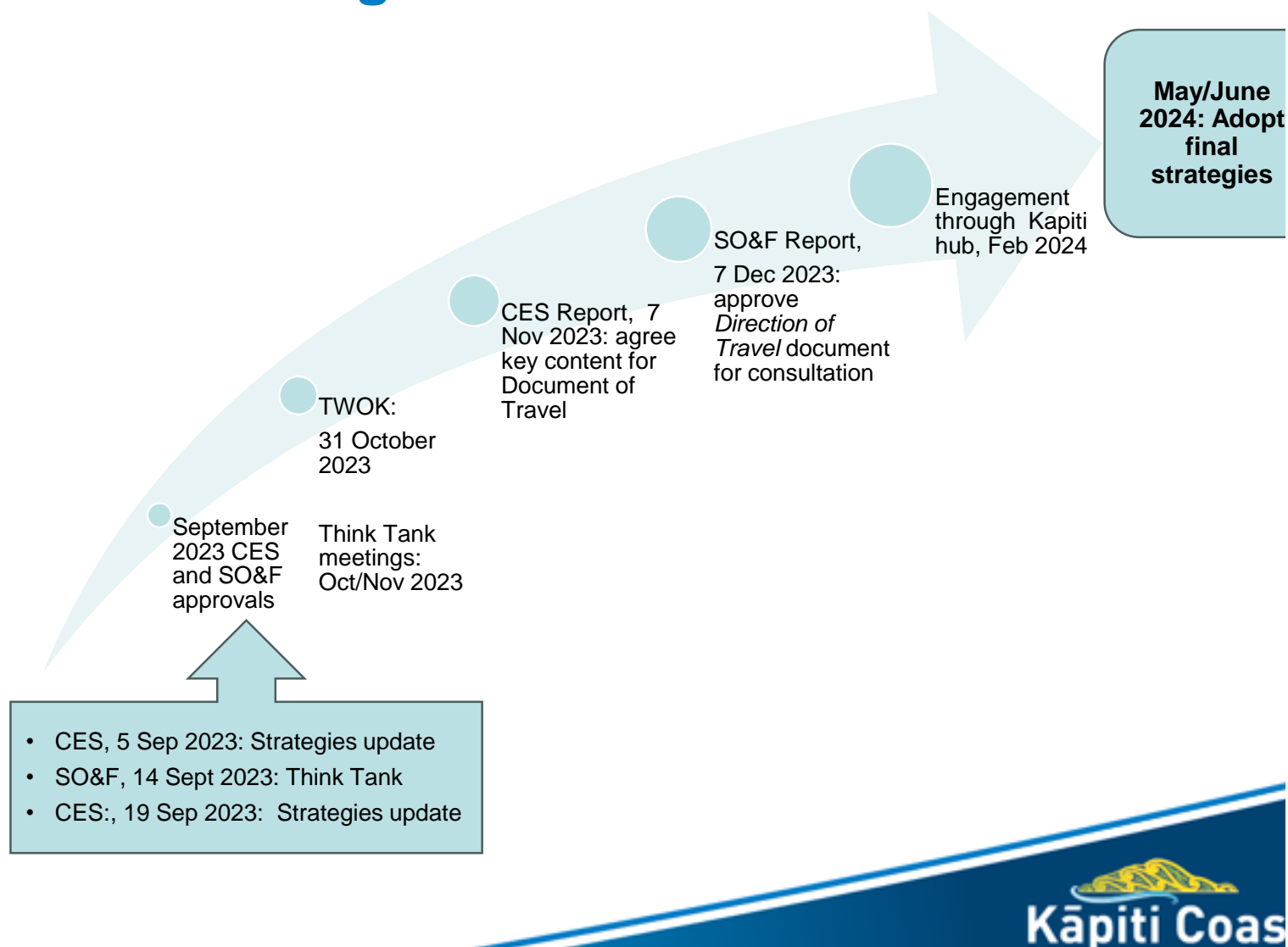


Example - target outcomes & pathways

Target Outcome	Pathways
Mana Whenua is strengthened.	Advocacy and collaboration, education and capacity building.
Environmental health is improved.	Regulation and compliance, asset management, innovation.
Resource use is sustainable for future generations.	Planning and policy, education and capacity building, regulation and compliance, innovation.
Outstanding natural landscapes are enhanced.	Asset management, advocacy and collaboration, project delivery and funding.
Built environments are low-impact and liveable.	Planning and policy, asset management, advocacy and collaboration, innovation.
Resilience to natural hazards is improved.	Planning and policy, advocacy and collaboration, education and capacity building, regulation and compliance.



High-level timeline



**Additional slides
(not for discussion)**

Ngā whenu whakapuāwai

The flourishing strands



- *Mō tātou, mā tatou* – For everyone everywhere
- *Ko te taiao ko au* – Te taiao at the heart
- *Tūranga* – Our place in te taiao
- *Hononga* – Our connection to each other
- *Māramatanga* – What we know to be true
- *Te pātaka* - Te taiao is the storehouse
- *Te manawaroa* - Te taiao endures



Separate but linked documents

Climate Strategy (10+ years)

- Focus: strategic direction
- Context: Where we are now, where are we going, how can we get there?
- Vision, objectives and clear outcomes
- Pathways to success
- Evidence (appendices)

Inspirational, ambitious, inclusive

Sets clear direction and priorities

Embraces co-design with mana whenua

Something to be proud of

Environment strategy (10+ years)

- Focus: Sets principles for improving our **natural environment** (mountains to the sea - biodiversity, coastline, rivers, forests)?
- State of play?: Factual doc reporting the state of our environment

Action Plans (Update 1-2 years)

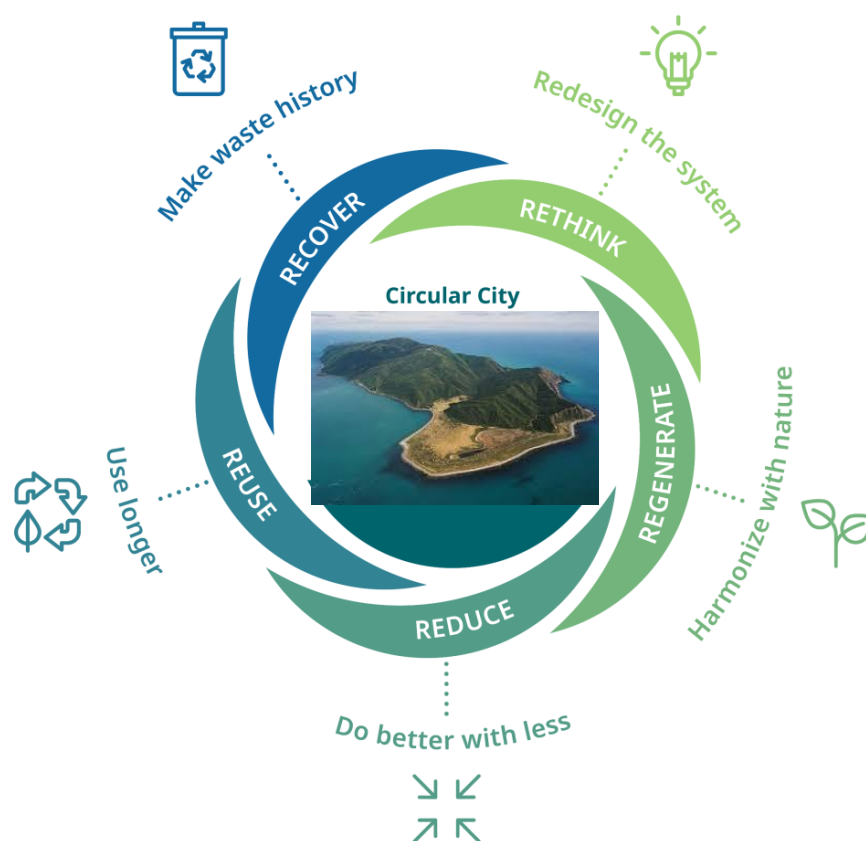
- Focus: High impact actions – now, next, later
- Council and community led actions
- KPIs/Success measures

Short punchy doc with timetabled high impact actions achieving clear outcomes

Facilitates Council and community-led action to tackle climate change



Roadmap to a low carbon circular Kapiti



Low carbon, flexible, and resilient homes, buildings and infrastructure.



Zero waste. Reuse, repair, share is commonplace.



Highly active transport population - infrastructure



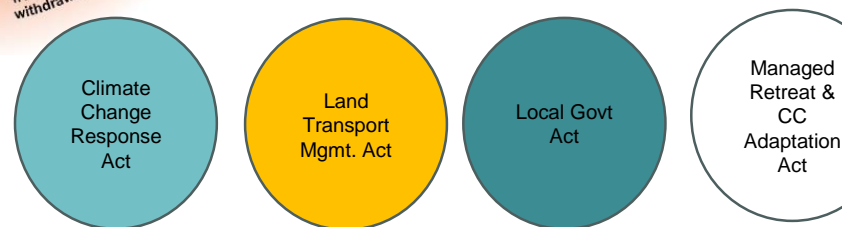
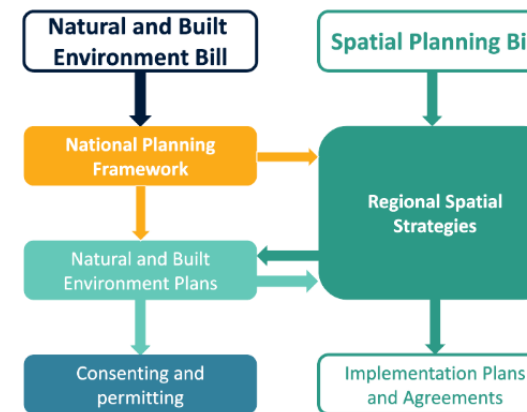
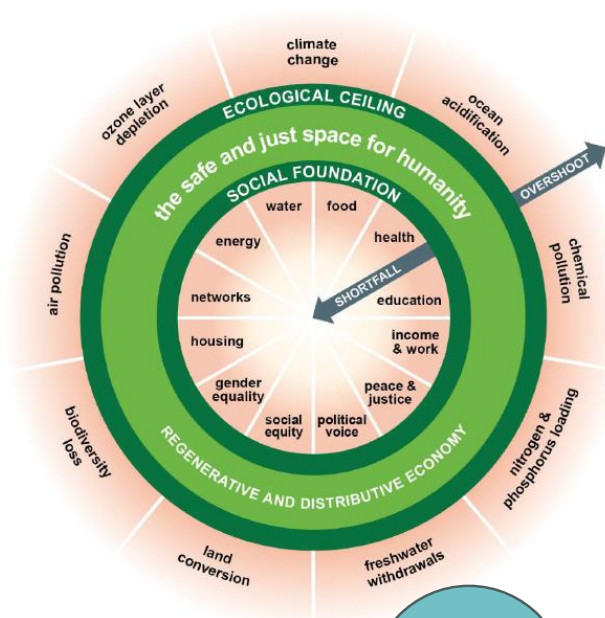
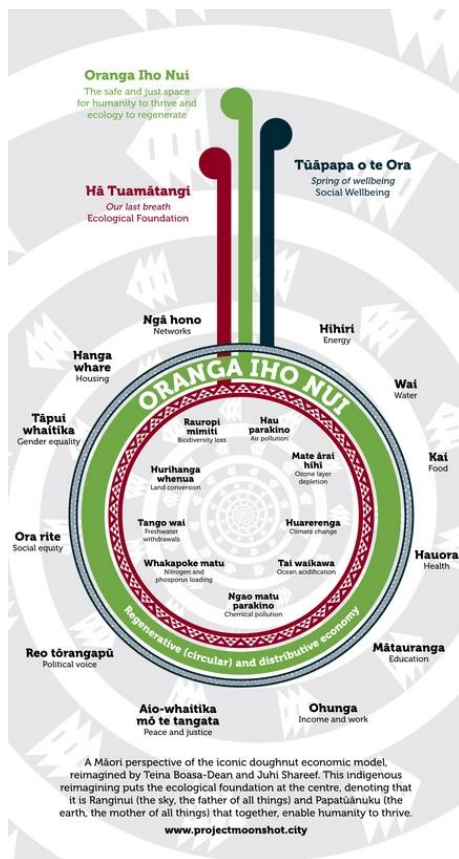
Self-sufficiency: Local food supply. Local renewable energy generation (waste, wind, solar)



Source: ICI FI


Kāpiti Coast

Frameworks



7.2 UPDATE ON LEGISLATION - NEW RMA LEGISLATION

Author: Angela Bell, Chief Advisor Strategy and Growth

Authoriser: Kris Pervan, Group Manager Strategy & Growth

TE PŪTAKE | PURPOSE

An overview of the changes brought in by the recently enacted Natural and Built Environment Act and the Spatial Planning Act, including what it will mean for Council.

NGĀ ĀPITI HANGA | ATTACHMENTS

Nil

7.3 WASTE MANAGEMENT AND MINIMISATION PLAN (2023-2029) - CONSULTATION SUMMARY

Author: Robbie Stillwell, Waste Projects Manager

Authoriser: Sean Mallon, Group Manager Infrastructure Services

TE PŪTAKE | PURPOSE

Public Consultation on the Regional Waste Minimisation and Management plan closed on Friday September 1st. This update will summarise the key themes and notable feedback for the Region and Kapiti-specific submissions and outline the next steps towards incorporating this feedback into the plan.

NGĀ ĀPITI HANGA | ATTACHMENTS

Nil

7.4 IMPLEMENTATION OF PLAN CHANGE 2

Author: Jason Holland, District Planning Manager

Authoriser: Kris Pervan, Group Manager Strategy & Growth

TE PŪTAKE | PURPOSE

The presentation will cover the steps being taken to implement PC2, including some hypothetical examples of proposals and how they would be processed under the District Plan now that PC2 is operative.

NGĀ ĀPITI HANGA | ATTACHMENTS

Nil

7.5 DESTINATION PARKS - ASSET MANAGEMENT PLAN

Kaituhi | Author: **Gareth Eloff, Parks, Open Space and Environment Manager**

Kaiwhakamana | Authoriser: **Mike Mendonça, Acting Group Manager Place and Space**

TE PŪTAKE | PURPOSE

- 1 To update the Subcommittee on asset management planning for Destination Parks.

TAUNAKITANGA | RECOMMENDATIONS

- A. That the Subcommittee note the update.
- B. That the Subcommittee note that a formal Asset Management Plan will be presented for approval to the October Strategy, Operations and Finance Committee.

TŪĀPAPA | BACKGROUND

- 2 The vision for the community is a Kāpiti with a thriving environment, vibrant economy, and strong communities. Toitū te whenua, toitū te wai, toitū te tāngata – toitū Kāpiti: the lifestyle choice. Public parks contribute directly to the vision for a strong community and thriving environment which in turn leads to a vibrant economy.
- 3 Destination and districtwide parks are the crown jewels in leisure and recreation provisions. Their purpose is to provide premier, high-quality spaces to support cultural vibrancy, visitor attraction, sporting opportunities and events. To achieve this status, the pinnacle of park categories, a destination park should include a range of experiences such as active recreation or novel attractions, provide places of relaxation, contemplation and appreciation, educational aspects, sports, events, functions or be valued for their amenity or intrinsic value.
- 4 The provision of quality parks and open spaces is integral to the ten strategic priorities developed through Vision Kapiti, across all three of the streams; “Place”, “People” and “Partnership”.
- 5 Kāpiti Coast District Council’s Districtwide and Destination parks provide facilities such as playgrounds, sports fields, gardens, and fitness equipment, encouraging people of all ages to engage in play and exercise. Our overarching management support tool in this regard is our Asset Management Plan (AMP).
- 6 The Parks, Open Space and Environment team manage, operate and maintain all six of the District’s destination parks, along with a growing number of parks and reserves (more than 100) throughout the District, and an extensive tracks and trails network.

HE TAKE | ISSUESAsset Management

- 7 Asset management entails a continual cycle of condition assessment informing component asset lifecycle. The useful life of an asset is impacted by several factors such as:
 - Physical properties – what it is made of, how it was built, different components that make up the asset, operational and maintenance needs.
 - The environment in which the asset resides – climate, socio-economic influencers.
 - Customer requirements – expectations, demands, level of use.
- 8 These collectively inform operational maintenance needs, as well as renewal and upgrade requirements as per the AMP, and identify any asset shortfalls requiring new acquisitions.

Demand Management and Levels of Service

- 9 Asset management planning utilises various sources of intelligence to identify community aspirations and expectations. These in turn inform, and are informed by, budget availability.
- 10 Changes to any one component (budget, levels of service, demand management) has an effect on the remaining two, and the AMP helps to understand this relationship and associated implications. Pre-empting potential changes and likely effects on asset management is covered under a high-level improvement plan within the AMP.

NGĀ MAHI PANUKU | NEXT STEPS

- 11 The formal AMP will be presented to the October Strategy, Operations and Finance Committee for approval.

NGĀ ĀPITI HANGA | ATTACHMENTS

Nil

8 TE WHAKAŪ I NGĀ ĀMIKI | CONFIRMATION OF MINUTES

8.1 CONFIRMATION OF MINUTES

Author: Anna Smith, Senior Democracy Services Advisor

Authoriser: James Jefferson, Group Manager Regulatory Services

Taunakitanga | Recommendations

That the minutes of the Climate and Environment Subcommittee meeting of 8 August 2023 be accepted as a true and correct record.

NGĀ ĀPITI HANGA | ATTACHMENTS

1. Climate and Environment Subcommittee Meeting Minutes - 8 August 2023 [↓](#)

CLIMATE AND ENVIRONMENT SUBCOMMITTEE MEETING MINUTES

8 AUGUST 2023

**MINUTES OF THE KĀPITI COAST DISTRICT COUNCIL
CLIMATE AND ENVIRONMENT SUBCOMMITTEE MEETING
HELD IN THE COUNCIL CHAMBER, GROUND FLOOR, 175 RIMU ROAD, PARAPARAUMU
ON TUESDAY, 8 AUGUST 2023 AT 9.34AM**

PRESENT: Cr Jocelyn Prvanov (Chair), Cr Sophie Handford, Cr Glen Cooper (via Zoom), Cr Liz Koh, Cr Shelly Warwick, Simon Black, Christian Judge, Glen Olsen, Tim Sutton

IN ATTENDANCE: Deputy Mayor Lawrence Kirby, Hara Adams, Sean Mallon, Kris Pervan, Steffi Haefeli, Evan Dubisky, Jessica Mackman, Jo Bryan, Rob Dunn, Monique Engelen, Nienke Itjeshorst, Doug Smith, Simon Scott

WHAKAPĀHA | APOLOGIES: Mayor Janet Holborow, Michael Moore, Kim Tahiwī

LEAVE OF ABSENCE: There were none.

1 NAU MAI | WELCOME

The Chair, Cr Jocelyn Prvanov, welcomed everyone to the meeting.

2 KARAKIA A TE KAUNIHERA | COUNCIL BLESSING

At the invitation of the Chair, Cr Shelly Warwick read karakia a te Kaunihera (the Council blessing).

3 WHAKAPĀHA | APOLOGIES

APOLOGY

COMMITTEE RESOLUTION CAES2023/15

Moved: Cr Jocelyn Prvanov

Seconder: Cr Shelly Warwick

That the apologies received from Mayor Janet Holborow, Waikanae Community Board Member Michael Moore and Kim Tahiwī (Ngā Hapū o Ōtaki) be accepted.

CARRIED

4 TE TAUĀKĪ O TE WHAITAKE KI NGĀ MEA O TE RĀRANGI TAKE | DECLARATIONS OF INTEREST RELATING TO ITEMS ON THE AGENDA

Cr Sophie Handford declared an interest in item 8.1 Climate Change Grants Summary of Applications and Recommendations as a member of Kāpiti Cycling Action.

CLIMATE AND ENVIRONMENT SUBCOMMITTEE MEETING MINUTES

8 AUGUST 2023

Item 6 Members' Business was moved to an earlier point in the agenda.

6 NGĀ TAKE A NGĀ MEMA | MEMBERS' BUSINESS

- (a) Leave of Absence
There were none.
- (b) Matters of an Urgent Nature.
There were none.

5 HE WĀ KŌRERO KI TE MAREA MŌ NGĀ MEA E HĀNGAI ANA KI TE RĀRANGI TAKE | PUBLIC SPEAKING TIME FOR ITEMS RELATING TO THE AGENDA

Lynn Sleath, Secretary of Kāpiti Cycling Action and Richard Young, member of Kāpiti Cycling Action spoke in support of Kāpiti Cycling Action's grant application under item 8.1 Climate Change Grants Summary of Applications and Recommendations and answered members' questions.

John Whitelaw, member of the Waikanae Estuary Care Group spoke in support of the Group's grant application under item 8.1 Climate Change Grants Summary of Applications and Recommendations and answered members' questions.

The Chair, Cr Jocelyn Prvanov, thanked all for attending.

Item 7.2 Corporate Emissions - Recommendations from Climate and Environment Subcommittee (15 June) and Feedback for Discussion was moved to an earlier point in the agenda.

5 HE KŌRERO HOU | UPDATES

7.2 CORPORATE EMISSIONS - RECOMMENDATIONS FROM CLIMATE AND ENVIRONMENT SUBCOMMITTEE (15 JUNE) AND FEEDBACK FOR DISCUSSION

Nienke Itjeshorst, Sustainability & Resilience Manager provided an update and answered members' questions alongside James Jefferson, Group Manager Regulatory Services and Sean Mallon, Group Manager Infrastructure Services.

Item 8.1 Climate Action Grants Summary of Applications and Recommendations was moved to an earlier point in the agenda.

6 PŪRONGO | REPORTS

8.1 CLIMATE ACTION GRANTS SUMMARY OF APPLICATIONS AND RECOMMENDATIONS

Rob Dunn, Sustainability Advisor Communities, briefly introduced the report then took the report as read. Rob Dunn and Nienke Itjeshorst, Sustainability & Resilience Manager answered members' questions. Members' discussed the report.

COMMITTEE RESOLUTION CAES2023/16

Moved: Mr Christian Judge
Seconder: Mr Simon Black

That the Climate and Environment Subcommittee considers the Climate Action Grants funding recommendations as outlined in this report, with the following amendments to be recommended

CLIMATE AND ENVIRONMENT SUBCOMMITTEE MEETING MINUTES

8 AUGUST 2023

to the Strategy, Operations and Finance Committee as follows:

That the funding be allocated in full and that the Kāpiti Cycling Action grant be funded in full and the balance to be allocated to the Waikanae Estuary Care Group.

CARRIED

Cr Sophie Handford did not take part in the discussion and abstained from voting, having declared a conflict of interest.

The meeting adjourned at 11.02am and reconvened at 11.17am.

7 HE KŌRERO HOU | UPDATES**7.1 CLIMATE AND RESILIENCE STRATEGY – STANDING UP A THINK-TANK**

Kris Pervan, Group Manager Strategy & Growth, introduced the item and spoke to the presentation alongside Doug Simpson, Principal Advisor Strategy.

Kris Pervan and Doug Simpson answered members' questions and members' discussed the item.

Mayor Janet Holborow joined the meeting at 12.24pm

8 TE WHAKAŪ I NGĀ ĀMIKI | CONFIRMATION OF MINUTES**9.1 CONFIRMATION OF MINUTES****COMMITTEE RESOLUTION CAES2023/17**

Moved: Cr Jocelyn Prvanov

Seconder: Mr Glen Olsen

That the minutes of the Climate and Environment Subcommittee meeting of 15 June 2023 be accepted as a true and correct record.

CARRIED**9 TE WHAKAŪNGA O NGĀ ĀMIKI KĀORE E WĀTEA KI TE MAREA | CONFIRMATION OF PUBLIC EXCLUDED MINUTES**

There were no public excluded minutes.

Cr Sophie Handford left the meeting at 12.27pm and did not return.

Tim Sutton left the meeting at 12.28pm and did not return.

10 CLOSING KARAKIA

Mayor Janet Holborow closed the meeting with karakia.

The Te Komiti Whāiti Āhuarangi me te Taiao | Climate and Environment Subcommittee meeting closed at 12.29pm.

.....
HEAMANA | CHAIRPERSON

Unconfirmed

9 CLOSING KARAKIA