



APPENDICES MINUTES

Ōtaki Community Board Meeting

Tuesday, 11 March 2025

Table of Contents

7.1	Ōtaki Town Centre Planning	
	Appendix 1	Ōtaki Town Centre Presentation - Updated 4
	Appendix 1	Activity Report - Community Board Deputy Chair Simon Black..... 20
	Appendix 2	Ōtaki Network Forum Minutes - Community Board Member Jackie Elliott. 22

KĀPITI TOWN CENTRE PLANS

Kāpiti Coast District Council



VISION KĀPITI

Vision Kāpiti is a three-year project aimed at shaping a clear, districtwide vision to help guide Council planning, decision making, programmes, services, and advocacy for decades to come.

Stage 1 was about engaging with our community to find out what aspirations they have for the future.

Stage 2, is about how we turn those aspirations into actions.

Stage 3 will focus on developing the “Blueprint for Change”. This will also include a reporting and monitoring component to make sure we are measuring progress in a meaningful way.

DRAFT!
We're shaping our districtwide Vision for Kāpiti

Vision Kāpiti will capture our local identity and reflect the needs and aspirations of our community to 2060 and beyond.

What's important to you? What's missing? Find out more and tell us what you think:

ŌTAKI | WAIKANAE | PARADARAUMU | RAUMATI | PĀEKĀKĀRIKI

Here's some of what we've heard so far...

PLACE
We value the environment and want to protect it
Address climate change
renewable energy
improving & promoting sustainable transport options

GROW WELL
Balance growth with preserving character
ensuring people have what they NEED

PEOPLE
Opportunities for all LOCALLY
Education
Employment
Improved facilities... especially for youth & families
Activities and facilities to SUPPORT Connecting WITH Others
Young people
disabled people
older people
families
Promote healing living
Accessible health services with local options
Affordable & accessible housing options

PARTNERSHIP
He Waka eke noa
Council and community working well TOGETHER
Lots of opportunities for making decisions together
Strengthening partnerships represented with IWI

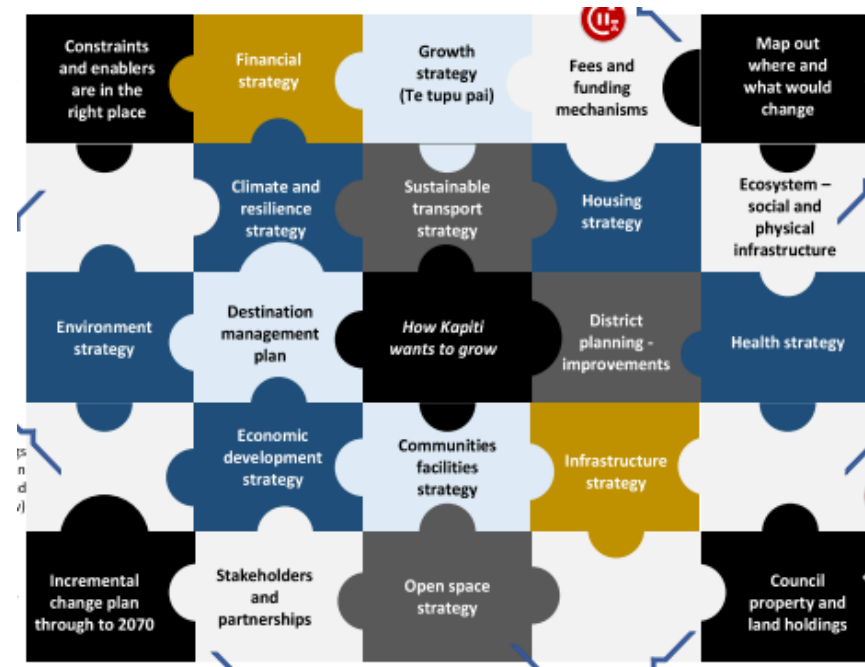
VISION KĀPITI – TOWN CENTRES

Stage Two looks at the development of plans for the district, including for the town centres.

The project will focus on the Paraparaumu, Waikanae and Ōtaki Town Centres initially, with plans for the other town centres to be developed at a later stage.

The Town Centres work is just one piece of the puzzle in the wider masterplanning work being completed for the district.

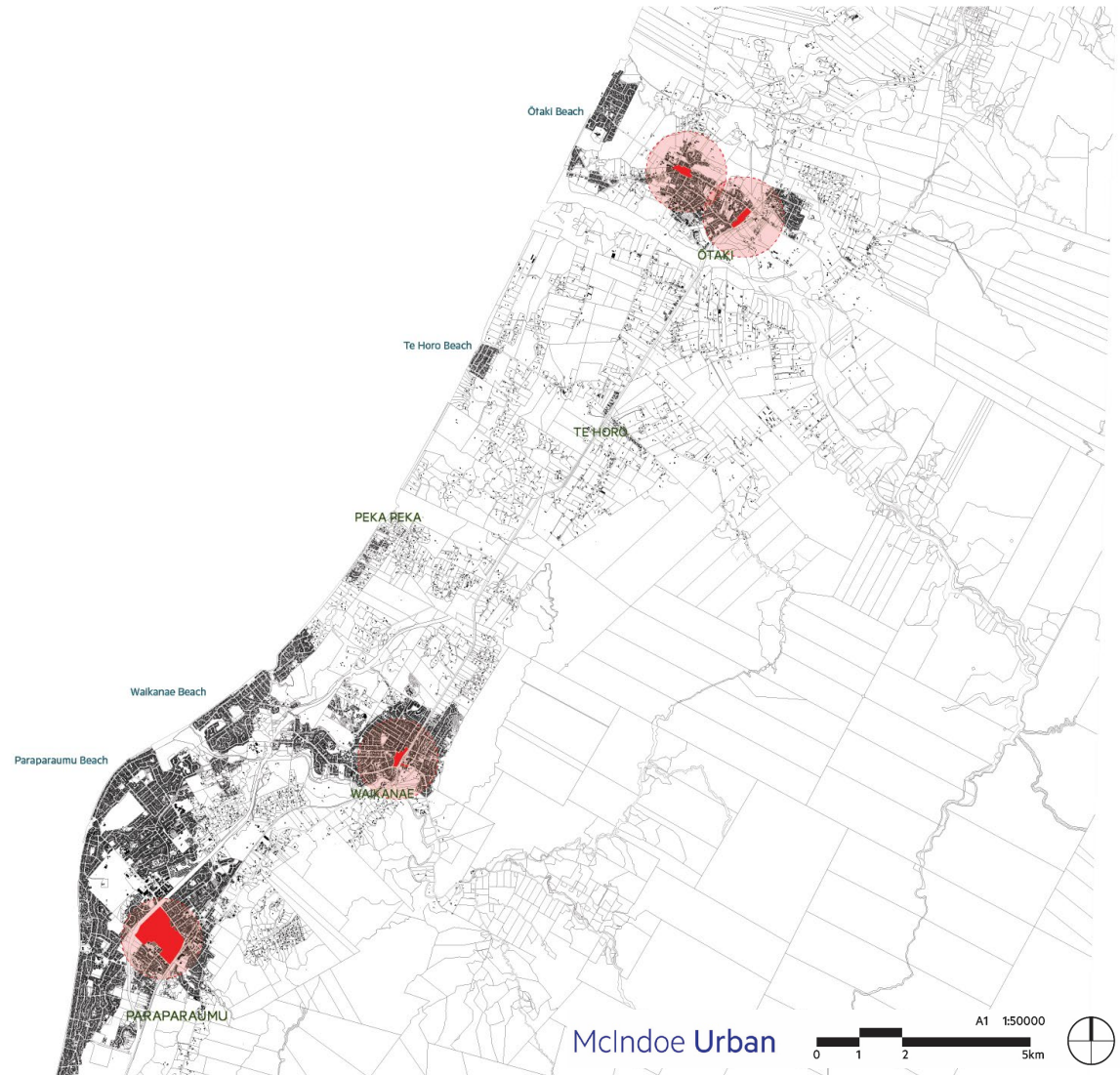
Activity underway in our Town Centres by property owners, investors and government departments has assisted this work in being first off the line.



FOUR CENTRES

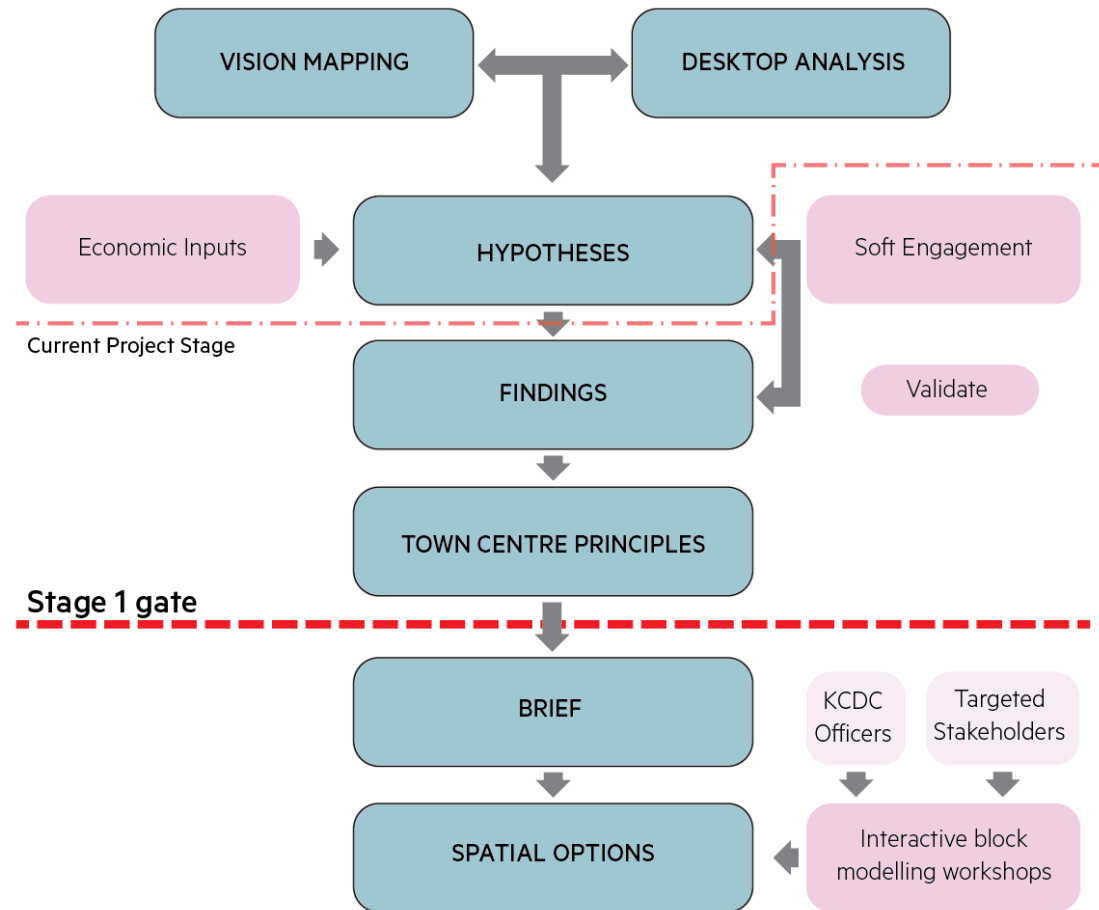
Defined by the current District Plan:

- Paraparaumu Metropolitan Centre
- Waikanae Town Centre
- Ōtaki Main Street Town Centre
- Ōtaki Railway Town Centre



PROJECT SCOPE

- Focused on Town Centre Zones as described in the District Plan
 - *Wider area consideration*
- 2 Stages of work
 - *1) Baseline & Issues, Engagement*
 - *2) Options & Town Centre Plans*
- Stage 1 parallel workstreams
 - *Vision/ Baseline studies/ Economic profile*
- KCDC validate findings
- Information sources
 - *KCDC GIS and Plans / Strategies*
 - *Vision Kāpiti*
 - *Desktop analysis*
 - *Site visits*
 - *Economic study*



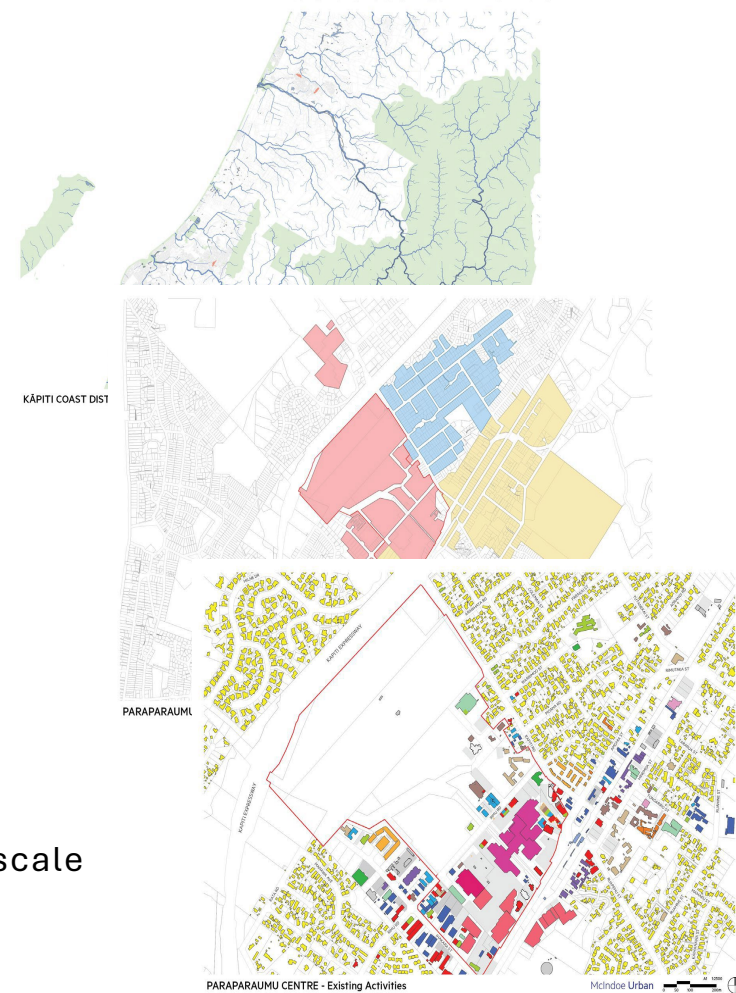
SCALES OF INVESTIGATION

- District-Wide
 - Encompassing all four centres
 - Wider interconnectivity issues

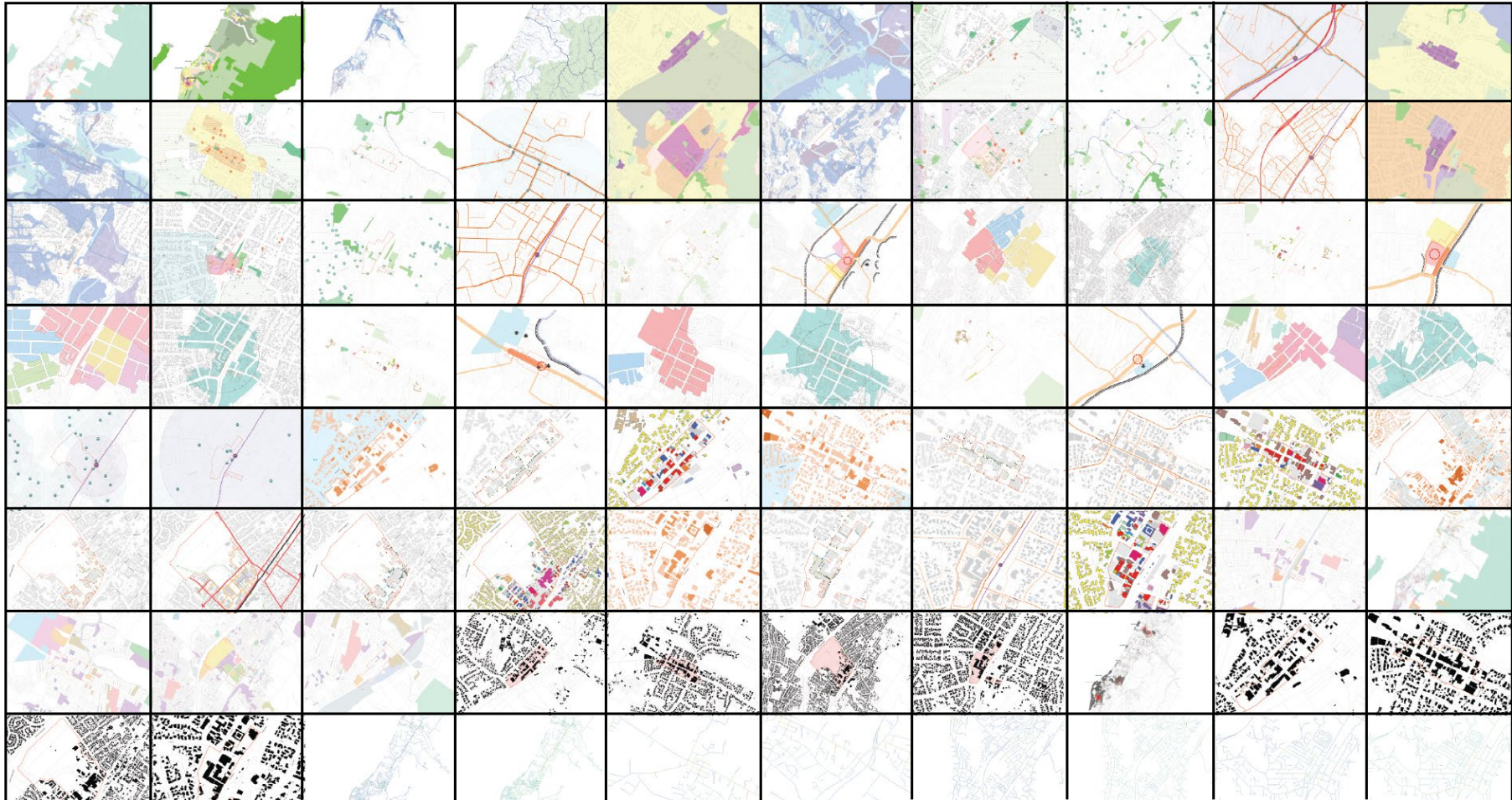
- Neighbourhood Scale
 - Town centre zone extents + wider neighbourhood catchment
 - Covers catchment, network and influence issues

- Local Scale
 - Town centre zone extents and immediate surroundings
 - Covers physical environmental and built form issues

- Types of analyses vary across the scales, with the appropriate scale selected to cover each information type.



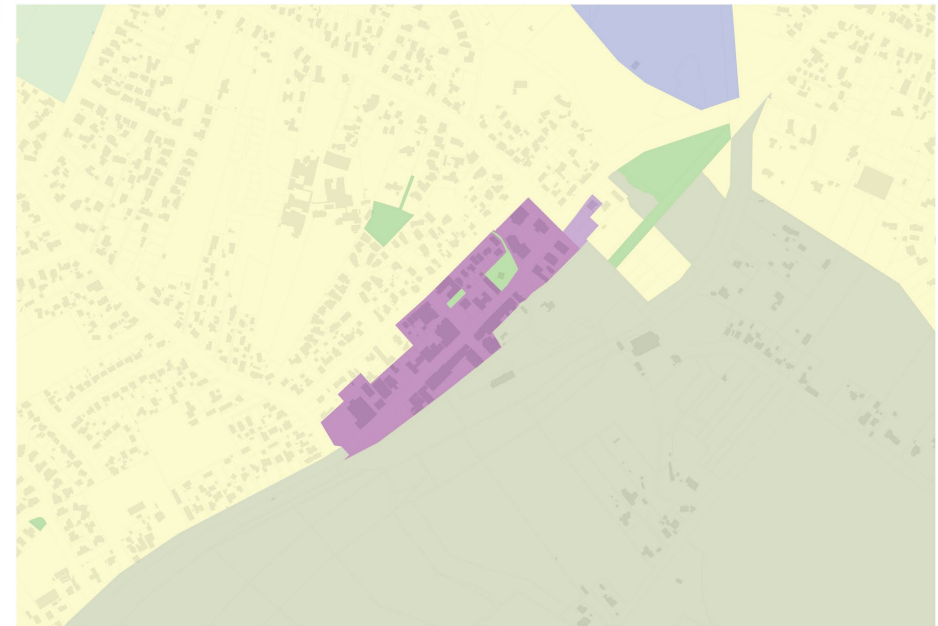
EXTENSIVE ANALYSIS



ŌTAKI – DISTRICT PLAN PRECINCTS



- Site
- Airport Zone
- Beach Residential
- Civic & Community
- District Centre
- Future Urban Development
- General Residential Zone
- High Density Residential Zone
- Industrial
- Open Space - Conservation
- Open Space - Local Park
- Open Space - Recreation & Leisure
- Outer Business Centre Zone
- Private Recreation & Leisure
- Rural - Dunes
- Rural - Hills
- Rural - Plains
- Rural - Residential
- Town Centre Zone



McIndoe Urban 0 50 100 200m A1 12000

ŌTAKI – EXISTING ACTIVITIES



