



# **RĀRANGI TAKE AGENDA**

## **Te Komiti Āhuarangi me te Taiao | Climate and Environment Committee Meeting**

**I hereby give notice that a Meeting of the Te Komiti Āhuarangi me te Taiao | Climate and Environment Committee will be held on:**

**Te Rā | Date: Thursday, 20 February 2025**

**Te Wā | Time: 9.30am**

**Te Wāhi | Location: Council Chamber  
Ground Floor, 175 Rimu Road  
Paraparaumu**

**Rach Wells  
Group Manager People and Capability**

**Kāpiti Coast District Council**

**Notice is hereby given that a meeting of the Te Komiti Āhuarangi me te Taiao | Climate and Environment Committee will be held in the Council Chamber, Ground Floor, 175 Rimu Road, Paraparaumu, on Thursday 20 February 2025, 9.30am.**

**Te Komiti Āhuarangi me te Taiao | Climate and Environment Committee Members**

Cr Jocelyn Prvanov	Chair
Cr Sophie Handford	Deputy
Mayor Janet Holborow	Member
Cr Glen Cooper	Member
Cr Liz Koh	Member
Cr Shelly Warwick	Member
Ms Kim Tahiwī	Member
Mr Huriwai Paki	Member
Ātiawa ki Whakarongotai Representative	Member
Mr Christian Judge	Member
Mr Michael Moore	Member
Mr Glen Olsen	Member
Mr Tim Sutton	Member
Mr Simon Black	Member

## Te Raupapa Take | Order Of Business

1	<b>Nau Mai   Welcome</b> .....	5
2	<b>Karakia a te Kaunihera   Council Blessing</b> .....	5
3	<b>Whakapāha   Apologies</b> .....	5
4	<b>Te Tauākī o Te Whaitake ki ngā Mea o te Rārangi Take   Declarations of Interest Relating to Items on the Agenda</b> .....	5
5	<b>He Wā Kōrero ki te Marea mō ngā Mea e Hāngai ana ki te Rārangi Take   Public Speaking Time for Items Relating to the Agenda</b> .....	5
6	<b>Ngā Teputeihana   Deputations</b> .....	5
	Nil	
7	<b>Ngā Take a Ngā Mema   Members' Business</b> .....	5
8	<b>He Kōrero Hou   Updates</b> .....	6
8.1	Potential Implications of RMA Amendments for Special Character Areas in the District Plan.....	6
8.2	Update on the Omnibus Reserve Management Plan.....	11
8.3	Interim Results from 23/24FY Carbon Inventory Audit.....	14
8.4	Climate Emergency Action Framework Progress Update 2024 .....	26
8.5	Community Sustainability Outreach 2025 - Greener Neighbourhood Programme Update.....	49
9	<b>Te Whakaū i ngā Āmiki   Confirmation of Minutes</b> .....	53
9.1	Confirmation of Minutes .....	53
10	<b>Karakia Whakamutunga   Closing Karakia</b> .....	59



**1 NAU MAI | WELCOME****2 KARAKIA A TE KAUNIHERA | COUNCIL BLESSING**

I a mātou e whiriwhiri ana i ngā take kei mua i ō mātou aroaro *As we deliberate on the issues before us,*

E pono ana mātou ka kaha tonu ki te whakapau mahara huapai mō ngā hapori e mahi nei mātou. *We trust that we will reflect positively on the communities we serve.*

Me kaha hoki mātou katoa kia whaihua, kia tōtika tā mātou mahi, *Let us all seek to be effective and just,*

Ā, mā te māia, te tiro whakamua me te hihiri *So that with courage, vision and energy,*

Ka taea te arahi i roto i te kotahitanga me te aroha. *We provide positive leadership in a spirit of harmony and compassion.*

**3 WHAKAPĀHA | APOLOGIES****4 TE TAUĀKĪ O TE WHAITAKE KI NGĀ MEA O TE RĀRANGI TAKE | DECLARATIONS OF INTEREST RELATING TO ITEMS ON THE AGENDA**

Notification from Elected Members of:

4.1 – any interests that may create a conflict with their role as an elected member relating to the items of business for this meeting, and

4.2 – any interests in items in which they have a direct or indirect pecuniary interest as provided for in the Local Authorities (Members' Interests) Act 1968

**5 HE WĀ KŌRERO KI TE MAREA MŌ NGĀ MEA E HĀNGAI ANA KI TE RĀRANGI TAKE | PUBLIC SPEAKING TIME FOR ITEMS RELATING TO THE AGENDA****6 NGĀ TEPUTEIHANA | DEPUTATIONS**

Nil

**7 NGĀ TAKE A NGĀ MEMA | MEMBERS' BUSINESS**

- (a) Leave of Absence
- (b) Matters of an Urgent Nature (advice to be provided to the Chair prior to the commencement of the meeting)
- (c) Members' Business

## 8 HE KŌRERO HOU | UPDATES

### 8.1 POTENTIAL IMPLICATIONS OF RMA AMENDMENTS FOR SPECIAL CHARACTER AREAS IN THE DISTRICT PLAN

Kaituhi | Author: **Dr Fazilat Tooranian, Senior Policy Planner**

Kaiwhakamana | Authoriser: **Kris Pervan, Group Manager Strategy & Growth**

#### TE PŪTAKE | PURPOSE

- 1 This paper seeks to raise awareness of second RMA Amendment Bill, the [Resource Management \(Consenting and Other System Changes\) Amendment Bill](#), which once passed into law will require Council to ratify its use of the Medium Density Residential Standards (MDRS) in the Operative Kāpiti Coast District Plan 2021 (District Plan), including in special character areas.

#### TAUNAKITANGA | RECOMMENDATIONS

- A. That the Climate and Environment Committee:
- A.1 Notes that the second RMA Amendment Bill, the Resource Management (Consenting and Other System Changes) Amendment Bill (“the Bill”), aims to make it quicker and simpler to consent renewable energy, boost housing supply, and reduce red tape for the primary sector.
  - A.2 Notes that the Bill will require councils (within a year of the relevant clause of the Bill coming into law) to make a ratification decision whether to retain, alter or remove the Medium Density Residential Standards from the District Plan.
  - A.3 Notes that Council lodged a submission on the Bill, in February 2025, supporting the requirement for councils to make the ratification decision referred to in Recommendation B of this paper.
  - A.4 Endorse, particularly in recognition of community interest in protection of special character areas, that staff develop advice to inform Council’s future decision whether to retain, alter or remove the Medium Density Residential Standards from the District Plan.
  - A.5 Note that further approvals will be sought from Council after the Bill comes into force in the second half of 2025.

#### TŪĀPAPA | BACKGROUND

##### Special character areas

- 2 The inclusion of special character areas in the District Plan reflects an intention by previous councils to preserve the environmental, cultural, and built-form characteristics of specific urban areas across the district.
- 3 Special character areas in the District Plan collectively cover approximately 390 hectares of residential zoned land, which is about 13% of residential zoned land in the district. The following table describes the key characteristics of each of the special character areas (precincts) recognised in the District Plan.

Special character area	Summary of primary character attributes
Beach Residential Precinct – Paekākāriki	Steep dune landforms and intact topography Mature vegetation creating continuous green canopies
Beach Residential Precinct – Raumati	
Beach Residential Precinct – Ōtaki	

Special character area	Summary of primary character attributes
	Low-density built form
Beach Residential Precinct – Waikanae Beach	Existing topography incorporates prominent elevated dune landforms  Distinctive and largely intact subdivision pattern associated with the historic development of the settlement  Low-density built form
Waikanae Garden Precinct	Extensive and contiguous vegetation cover, especially that related to tall native and exotic trees.

- 4 Prior to Plan Change 2 (PC2 – Intensification), the special character areas were subject to a range of additional District Plan provisions that were more restrictive on development in order to maintain the existing character within these areas. These provisions varied depending on the character area, but included:
- 4.1 A more restrictive height standard;
  - 4.2 More restrictive yard setbacks;
  - 4.3 Reduced building coverage;
  - 4.4 Higher minimum allotment sizes.
- 5 Additionally, development within the Beach Residential Precincts was assessed against a Design Guide.
- 6 These additional provisions were on top of protective district-wide requirements in the District Plan relating to notable trees, key indigenous trees, and ecological sites.

### Plan Change 2's impact on District Plan protections for special character areas

- 7 A primary purpose of PC2 was to incorporate Government's mandatory Medium Density Residential Standards ('MDRS') into the District Plan and give effect to the intensification policies (Policies 3 and 4) of the National Policy Statement on Urban Development 2020 (NPS-UD).
- 8 The implications of Government's directives for special character areas were carefully considered by Council in the process of preparing PC2.<sup>1</sup> Council initially considered designating these areas as "other qualifying matters" to exempt them from intensification under the MDRS.<sup>2</sup> Ultimately Council concluded special character areas did not meet the stringent criteria that needed to be satisfied,<sup>3</sup> and as a result, special character areas generally became subject to the MDRS.<sup>4</sup>
- 9 While the special character areas themselves were not removed by PC2 and consideration must still be given to the special characteristics of those areas in certain circumstances,<sup>5</sup> the plan change has significantly reduced the protective nature of the District Plan towards those

<sup>1</sup> See pp.170-172 of the [section 32 report for PC2](#).

<sup>2</sup> See section [77L\(j\)](#) of the RMA.

<sup>3</sup> See section [77L\(b\)](#) of the RMA.

<sup>4</sup> The MDRS is precluded from applying to significant parts of many special character areas as a result of other qualifying matters, particularly the coastal qualifying matter precinct, district-wide requirements relating to trees, and flood hazard areas.

<sup>5</sup> Being when a development would breach the density standards required by the MDRS and Policy 3. For instance Policy GRZ-P6 states "Subdivision, use and development in the Waikanae Garden Precinct will give consideration to: (1) Retaining, where practicable, existing mature trees and areas of extensive vegetation; and (2) The relationship between built form and the landscape and streetscape setting, having regard to (1)."

areas. Most notably, the application of the MDRS removed the restrictive development provisions relating to height, setback, building coverage and allotment size in those areas.

- 10 Some parts of special character areas are also affected by Government requirements to give effect to Policy 3 of the NPS-UD. Most notably this policy, which requires greater building heights to be enabled around centres and rapid transit stops, led to a High-Density Residential Zone encroaching into part of the Waikanae Garden Precinct whose provisions are enabling of higher buildings than the MDRS.
- 11 PC2 was initially publicly notified for submissions on 18 August 2022 and the application of the MDRS had immediate legal effect from that date. The plan change became operative on 1 September 2023.<sup>6</sup>

**The Resource Management (Consenting and Other System Changes) Amendment Bill**

- 12 Since late 2023 the Coalition Government introduced a phased approach reform to the Resource Management system in a three-stage process:
  - 12.1 Phase One repealed the Natural and Built Environment Act and the Spatial Planning Act.
  - 12.2 Phase Two introduced a fast-track consenting regime, proposing targeted legislative changes to the RMA and seeks to implement the Going for Housing Growth package.
  - 12.3 Phase Three involves replacing the RMA with new resource management legislation based on the enjoyment of property rights.
- 13 The Resource Management (Consenting and Other System Changes) Amendment Bill is part of Phase Two reforms<sup>7</sup>. The Bill has a wide scope which includes:

RESOURCE MANAGEMENT (CONSENTING AND OTHER SYSTEM CHANGES) AMENDMENT BILL – KEY PROPOSALS				
Resource Management (Consenting and Other System Changes) Amendment Bill will progress targeted amendments to deliver objectives for Electrify NZ, Infrastructure for the Future, Going for Housing Growth, and the Primary Sector Growth Plan.				
Infrastructure (including energy)	Housing	Farming & primary sector	Emergencies and natural hazards	System improvements
<ul style="list-style-type: none"> <li>• Requires renewable energy generation consents to be decided within one year of application</li> <li>• Requires default 35-year consent duration for renewable energy generation and long-lived infrastructure consents</li> <li>• Extends the duration of port permits under section 384A of the RMA and extends requiring authority status to ports</li> <li>• Increases the default lapse period for renewable energy consents from 5 to 10 years</li> <li>• Increases the lapse period for designations from 5 to 10 years to allow more time to progress infrastructure projects</li> <li>• Removes the requirement for designating authorities to consider alternatives where they are the sole land holder</li> <li>• Amends the scope of discharge rules under section 70 to provide certainty and align with changes to section 107 delivered through the RM (Freshwater and Other Matters) Amendment Act 2024</li> </ul>	<ul style="list-style-type: none"> <li>• Introduces a ratification vote to allow relevant councils to opt-out of the Medium Density Residential Standards (MDRS), provided they demonstrate 30 years' worth of housing growth</li> <li>• Provides an efficient, flexible pathway for councils to progress a plan change to remove or alter the MDRS and deal with consequential matters. This includes:                             <ul style="list-style-type: none"> <li>◦ requiring councils to use the Streamlined Planning Process (SPP) to progress plan changes to remove or alter the MDRS</li> <li>◦ removing the requirement to apply to the Minister for the Environment to use the SPP when removing or altering the MDRS</li> <li>◦ amending decision-making arrangements for any plan change using the SPP – noting this will include plan changes removing or altering the MDRS</li> </ul> </li> <li>• Provides the Minister for the Environment with new intervention powers to ensure compliance with national direction, including housing and business development capacity assessments</li> </ul>	<ul style="list-style-type: none"> <li>• Reduces regulatory overlap between the RMA and Fisheries Act 1996 by clarifying and constraining the extent to which councils can control fishing for biodiversity and related values protection purposes under the RMA</li> <li>• Provides more flexibility and certainty for marine farms by enabling changes to consent conditions for aquaculture</li> <li>• Amends Part 9A of the RMA to make farm plan certification and audit services more cost effective and practical by better enabling industry organisations to deliver these services</li> <li>• Requires resource consents for wood processing facilities to be decided within one year of application</li> </ul>	<ul style="list-style-type: none"> <li>• Improves emergency provisions, including introducing a new regulation-making power for emergency responses to assist with recovery</li> <li>• Clarifies and strengthens councils' ability to decline land use consents, or apply appropriate conditions, where there are significant risks of natural hazards</li> <li>• Clarifies and strengthens councils' ability to decline land use consents, or apply appropriate conditions, where there are significant risks of natural hazards</li> </ul>	<ul style="list-style-type: none"> <li>• Amends the compliance regime to deter offences, including by:                             <ul style="list-style-type: none"> <li>◦ increasing penalties</li> <li>◦ removing the ability to insure against penalties for non-compliance</li> <li>◦ allowing electronic service of documents</li> <li>◦ better enabling cost recovery for councils</li> <li>◦ enabling consideration of a person's compliance history in consent decisions</li> <li>◦ increasing the term of excessive noise directions</li> <li>◦ aligning the scope of abatement notices</li> <li>◦ fixing a minor drafting error on MPI enforcement officers</li> <li>◦ other consenting improvements</li> </ul> </li> <li>• Makes technical amendments to DOC functions to improve their ability to manage discharges and ensure compliance and enforcement</li> <li>• Provides clarity on the scope of further information requests and requirements for consents to ensure these are not overly onerous on applicants</li> <li>• Enables applicants to request to review consent conditions prior to a decision being issued</li> <li>• Enables councils to recover costs for reviewing consents when the review is the result of national direction</li> <li>• Enables councils to access the Streamlined Planning Process for listing and de-listing heritage buildings</li> <li>• Aligning terminology with the Takutai Moana Act, and validating the payment of past royalties</li> </ul>

- 14 The Bill was introduced to Parliament on 9 December 2024 for its first reading, and will progress through usual Select Committee process over the next few months. In relation to MDRS, it:

<sup>6</sup> Except the part of the plan change relating to the rezoning of an 18 hectare site in Otaihangā, which became operative on 1 November 2023. For more background on PC2 visit: <https://www.kapiticoast.govt.nz/council/forms-documents/district-plan/operative-plan-changes/plan-change-2-intensification/about-pc2/>

<sup>7</sup> The Bill can be viewed at: <https://www.legislation.govt.nz/bill/government/2024/0105/latest/whole.html>

- 14.1 Enables councils to opt out of the MDRS if they demonstrate “30 years of housing growth capacity” (the meaning of this phrase will be defined in a revised NPS-UD which has yet to be released for submissions).
- 14.2 Requires councils to make a “ratification decision” no later than a year after commencement of this section<sup>8</sup> whether to retain the MDRS, alter it, or remove it.
- 14.3 Requires councils to use the Streamlined Planning Process (SPP) for removing or altering the MDRS.
- 15 Council has lodged a submission on the Bill:<sup>9</sup>
  - 15.1 Supporting the greater flexibility being offered to councils regarding the application of the MDRS; and
  - 15.2 Seeking to ensure that the plan change has sufficient scope to consider any other matters of concern it may wish to address regarding Plan Change 2 (such as how Policy 3 of the NPS-UD was applied around town and other centres).

## HE TAKE | ISSUES

- 16 Staff are aware that:
  - 16.1 Some developments have occurred (or have been proposed to occur) in special character areas that have caused concern amongst local residents, including in the Waikanae Garden Precinct.
  - 16.2 It follows there is likely to be considerable community interest in the new sense of flexibility this Bill provides for Council in relation to where, how and if the MDRS is applied in the district.

## NGĀ KŌWHIRINGA | OPTIONS

- 17 The Amendment Bill is not anticipated come into force, assuming it makes it through the usual Select Committee process, until the second half of 2025. On this basis, staff recommend that:
  - 17.1 The Committee does not pass any resolutions relating to the future use of the MDRS in the District Plan at this time, for the reasons that:
    - 17.1.1 Council will need to consider what the “revised NPS-UD” which has yet to be released for submissions means by “30 years housing growth” before it considers its position.
    - 17.1.2 Council will need to understand the final form of the RMA amendments before it considers its position.
    - 17.1.3 Analysis to inform Council decisions about its options has yet to be commenced and there are limits to how far this analysis can proceed ahead of the Bill coming into law, and the revised NPS-UD process being completed.
    - 17.1.4 Given central government timeframes, it will not be possible to progress a ratification decision prior to the upcoming election in October 2025.
  - 17.2 That in recognition of community interest on this matter, the Committee **endorse** that staff initiate work to develop advice for Council’s future decision whether to retain, alter or remove the MDRS from the District Plan, so that a ratification decision can be considered by Council in 2026 in line with timeframes expected to be set by the Bill.

---

<sup>8</sup> The Bill states that this section will come into force “on the earlier of a date set by Order Council and 1 year after Royal assent.”

<sup>9</sup> Council’s submission on the Bill is available at: <https://www.kapiticoast.govt.nz/media/we5iidna/250210-rma-amendment-bill-submission-signed.pdf>

**NGĀ MAHI PANUKU | NEXT STEPS**

- 18 Council will continue to engage with the Bill process, and will seek further decisions, as appropriate, with Strategy Operations and Finance Committee or Council in coming months.

**NGĀ ĀPITI HANGA | ATTACHMENTS**

Nil

## 8.2 UPDATE ON THE OMNIBUS RESERVE MANAGEMENT PLAN

Kaituhi | Author: **Yolanda Morgan, Team Leader Open Space Planning**

Kaiwhakamana | Authoriser: **Brendan Owens, Group Manager Customer and Community**

### TE PŪTAKE | PURPOSE

- 1 This report provides an update on the preparation of the Omnibus Reserve Management Plan (RMP), including the reserve classification process.

### TAUNAKITANGA | RECOMMENDATIONS

- A. That the Climate and Environment Committee notes the update and the next steps for the development of the omnibus Reserve Management Plan.

### TŪĀPAPA | BACKGROUND

- 2 Council manages 125 parks and reserves, totalling 438 ha of open space. This includes our destination parks, sports fields, esplanade reserves, neighbourhood parks and playgrounds, heritage, scenic and local purpose reserves.
- 3 The Open Space Planning team has been preparing to develop an omnibus RMP, covering all 125 parks and reserves that are managed by the Council.
- 4 Hui with our iwi partners have been held to co-design our approach to the development of the RMP and we continue to work together to understand and document the special values of the whenua which make up our parks and reserves. The next hui is scheduled to take place on the 21<sup>st</sup> February.
- 5 Following that hui, a recommendation will be put to Council to publicly notify our intention to prepare the RMP. This will start the process (stipulated in the Reserves Act) that must be followed to prepare an RMP.

### HE TAKE | ISSUES

- 6 Council is required by legislation to prepare, and keep under continuous review, a management plan for the reserves that it manages. Council currently has management plans for only 19 reserves (out of 125), and many of these plans are more than 30 years old.
- 7 Reserve management plans provide for the use, enjoyment, maintenance, protection and preservation of reserves. Management plans provide guidance around what uses and activities are acceptable (or not acceptable) on individual or group of reserves and ensures transparent and consistent decision making.
- 8 The legal status of an RMP varies according to the legal status of the land it covers:
  - 9.1 For land that is held subject to the Reserves Act, and classified according to its primary purpose, it will be a statutory Reserve Management Plan under the Act.
  - 9.2 For Council land that is managed for open space purposes, that has not yet been classified, it will be a non-statutory guiding document.
- 9 As part of the RMP process, Council is also undertaking a staged process to classify the unclassified parks and reserves, where that is appropriate. The RMP will then become a statutory management plan under the Act for these sites.
- 10 Many of our unclassified reserves can be classified without public notification. These are reserves that are currently used and managed for the purpose for which they were acquired by Council and are zoned Open Space in the District Plan.

- 11 At our February hui we will continue to discuss and confirm those sites to be classified, along with the proposed classifications. A recommendation to classify those reserves will be taken to Council, along with the recommendation to notify Council's intention to prepare an RMP.
- 12 Any unclassified reserves that need further research or additional consultation with stakeholders, and those that need to be publicly notified due to their current use or legal status, will continue to be discussed and will be included in a future recommendation.

## NGĀ KŌWHIRINGA | OPTIONS

- 13 **Do nothing** - Council could continue to operate without a management plan for its parks and reserves, or with outdated plans for those reserves where they do exist. However, this is a breach of Council's requirements under the Act. Without up to date, fit for purpose management plans, decision making around the management, use and development of Council managed parks and reserves risks being inconsistent, not transparent and not in line with the views and aspirations of the community.
- 14 **Prepare an RMP for each Reserve** – Council could prepare individual management plans for each reserve, or groups of reserves. As we currently have very few management plans in place and 125 reserves, it is efficient to prepare one management plan providing a consistent set of policies. Individual reserves, or groups of reserves (e.g. neighbourhood playgrounds), will still be able to have specific policies on their management where relevant.
- 15 **Prepare an Omnibus RMP** – An omnibus RMP is the most efficient option to meet the Council's legislative requirements and enable both general provisions, as well as reserve specific provisions, to be provided in one document. The omnibus RMP will be made up of two sections:
  - A. General Policy Section
  - B. Reserve Specific Management Plans

While the document will be larger than an individual RMP, we aim to publish the plan using the E-plan platform to enable easy navigation. For example, users will be able to search by reserve name or address and be provided with links to all the relevant policies for that reserve.

## MANA WHENUA

- 16 The development of the RMP to date has followed a co-design approach with the involvement of representatives from our three iwi partners.
- 17 The RMP will acknowledge the cultural values of the whenua which make up our parks and reserves and will recognise the intrinsic relationship of iwi with the land through enabling appropriate practices, management provisions and storytelling.
- 18 We will continue to work with our iwi partners to refine the scope of the RMP and in drafting the provisions of the RMP.

## NGĀ MAHI PANUKU | NEXT STEPS

- 19 The preparation of an RMP must follow the process set out in the Reserves Act 1977. The includes two phases of public notification and engagement.
- 20 Following the February hui, a recommendation will be taken to Council to pass the following resolutions:
  - To notify the intention to prepare an omnibus RMP for all Council managed reserves and invite feedback from stakeholders and the wider community.
  - To classify a number of reserves (the final list of reserves to be classified will be confirmed following the February hui).

- 21 If the Council passes the resolution to notify the intent to prepare an RMP, the next steps will be:
- a. Publication of the notice of intent
  - b. Stakeholder and community engagement phase including:
    - i. Have your say platform
    - ii. Social media
    - iii. Staff “pop-ups” at community markets, coastlands and play events
    - iv. Community board meetings
    - v. Targeted stakeholder engagement
  - c. Feedback period closes
  - d. Analysis of public feedback and drafting of the RMP
  - e. Draft RMP document publicly notified and call for submissions
  - f. Submission period
  - g. Hearings
  - h. Recommendation and decision following hearings
  - i. Final RMP published
- 22 If the Council passes the resolution to classify any reserves, then a notice will be placed in the gazette formalising those classifications.

### NGĀ ĀPITI HANGA | ATTACHMENTS

Nil

### 8.3 INTERIM RESULTS FROM 23/24FY CARBON INVENTORY AUDIT

Kaituhi | Author: **Matthew Nabney, Advisor Sustainability**

Kaiwhakamana | Authoriser: **Brendan Owens, Group Manager Customer and Community**

#### TE PŪTAKE | PURPOSE

- 1 The purpose of this report is to provide you with the interim results from Council's annual greenhouse gas (GHG) inventory audit, for the 23/24FY.

#### TAUNAKITANGA | RECOMMENDATIONS

That the Climate and Environment Committee:

- A. Note this report.
- B. Note that these are interim results, and final verification is expected by the end of February/ early March.

#### TŪĀPAPA | BACKGROUND

- 2 Council officers submitted Council's annual GHG inventory audit report (audit report) to Toitū for verification in December 2024. The audit report has not received verification yet but has been through the initial audit process.
- 3 In 2023, Council set two new emission reduction targets:
  - 3.1 An aspirational target to be net zero emissions by 2040, and
  - 3.2 A target to reduce our category 1 and 2 emissions a 'further' 15.5% by 2032, measured against a baseline year of 2022.

#### HE TAKE | ISSUES

- 4 Council's corporate carbon emissions for the 23/24FY were 3,489tCO<sub>2</sub>-e which is a reduction of 11.3% compared to the 22/23FY primarily due to:
  - 4.1 improvements to the Ōtaki and Paraparaumu Wastewater Treatment Plants,
  - 4.2 an improvement to the way Council calculates emissions from sludge,
  - 4.3 a reduction in sludge production, and
  - 4.4 a reduction in calculated emissions from wastewater processing.
- 5 Interim results indicate that Council's category 1 and 2 emissions have reduced 24.7% compared to the 2022 baseline. This means that Council has met the 15.5% 'further' emissions reduction target, demonstrating that Council's renewal and maintenance programme can achieve multiple co-benefits.
- 6 Although we have met our 2032 target ahead of schedule it is important to note that:
  - 6.1 emissions from electricity consumption vary between years due to the level of renewables in the main grid. These fluctuations could impact Council's ability to meet future emissions reductions targets. For example, emissions from electricity in the 22/23FY halved compared to the 21/22FY, then increased by 23% in the 23/24FY
  - 6.2 future significant emissions reductions from wastewater processing are unlikely given the improvements and maintenance of these facilities.
- 7 The five key projects Council agreed to progress in June 2023 to meet the medium-term emissions reduction target, will support Council to 'lock-in' future emissions reductions.

- 8 Several sources of emissions increased Council's GHG footprint. Emissions from electricity, natural gas, diesel and fertiliser increased Council's footprint by 246tCO<sub>2</sub>-e.

### NGĀ KŌWHIRINGA | OPTIONS

- 9 There are no options for you to consider in this report.

### NGĀ MAHI PANUKU | NEXT STEPS

- 10 Council officers will notify you if the verified results differ to the interim emissions results.
- 11 Council officers will work with Toitū to determine whether Council is required to reset its medium-term emissions reduction target. If a new target is required, officers will provide you with an update in due course.
- 12 Any targets considered would be developed to align with Council's climate strategy to ensure a cohesive approach to emissions reductions, with approval from Council before implementation.

### NGĀ ĀPITI HANGA | ATTACHMENTS

1. Interim Results from 23/24FY Greenhouse Gas (GHG) Inventory Audit [↓](#)

# Council's GHG emissions

Interim results from 23/24FY  
greenhouse gas (GHG) inventory audit

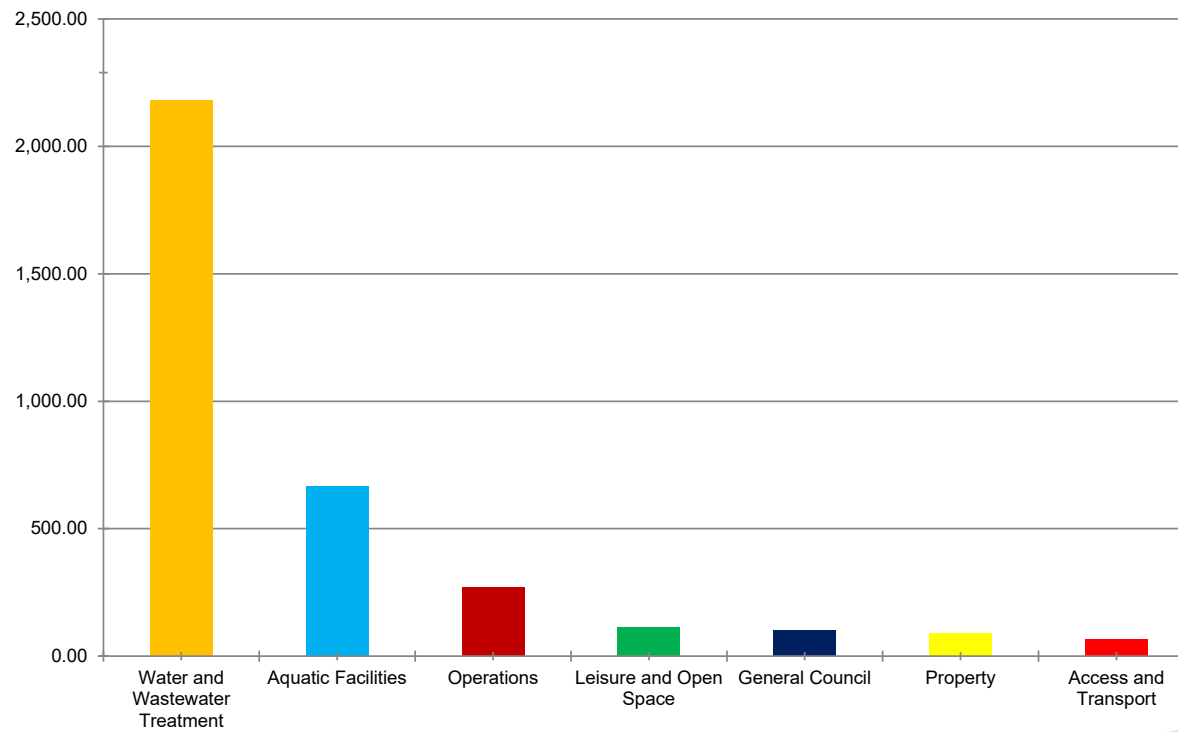


## Key results

- For the 23/24FY Councils emissions were 3,489tCO<sub>2</sub>-e (excluding staff commuting).
- This is a **reduction of -11.3%** (-446tCO<sub>2</sub>-e) compared to the 22/23FY.
- The reduction is primarily due to improvements to wastewater processing and sustained lower emissions from electricity.
- The latest GHG inventory report included two new sources of emissions:
  1. 43tCO<sub>2</sub>-e produced by wood pellet cartage, and
  2. 371tCO<sub>2</sub>-e from staff commuting.\*

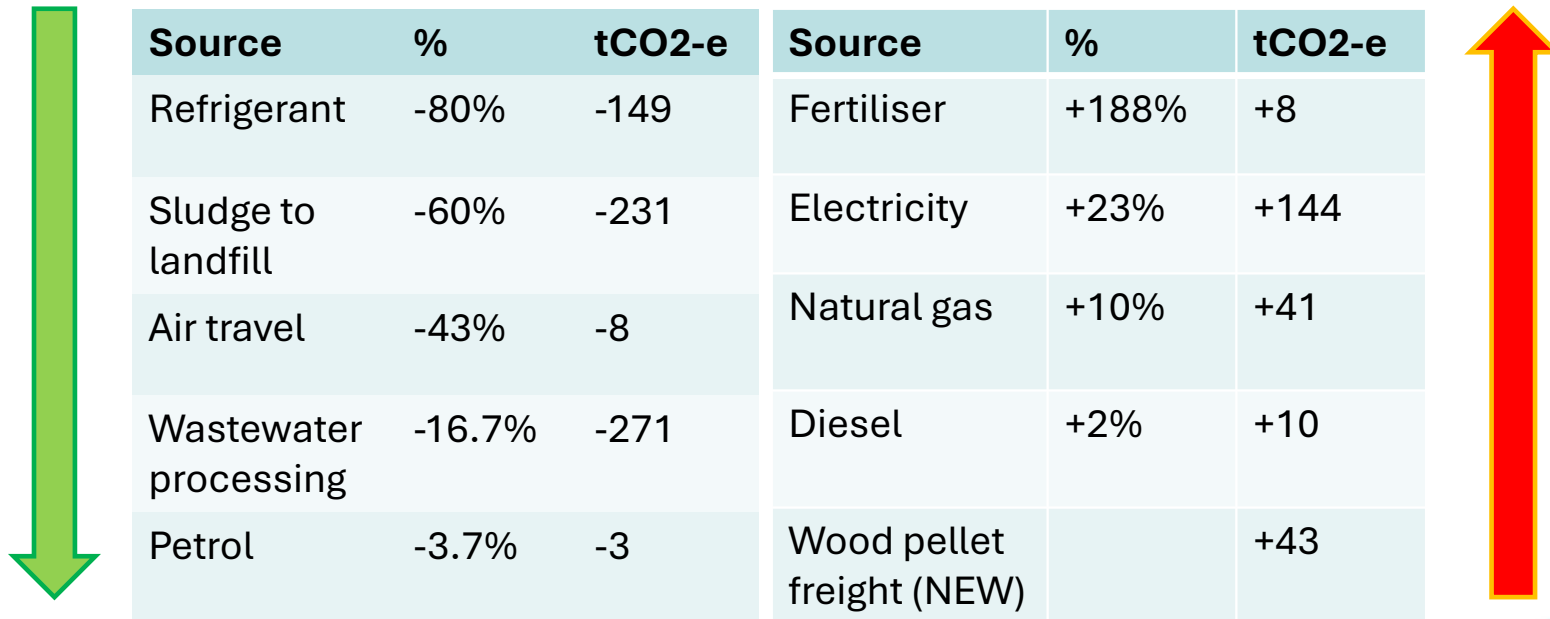
# Emissions by BU

Total emissions (tCO<sub>2</sub>e) by business unit



# Emissions reductions/ increases

**Total gross emissions reduced by 11.3%**



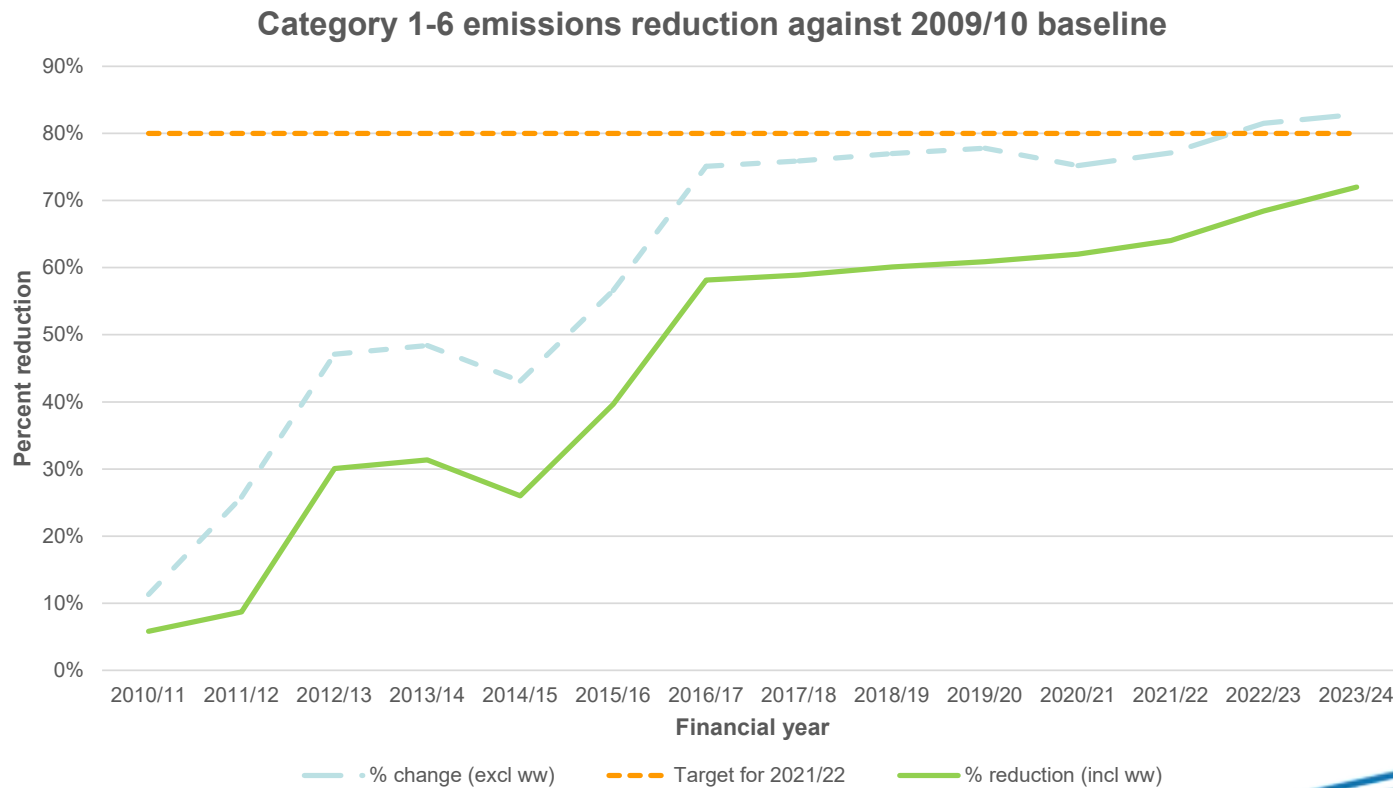
Source	%	tCO2-e	Source	%	tCO2-e
Refrigerant	-80%	-149	Fertiliser	+188%	+8
Sludge to landfill	-60%	-231	Electricity	+23%	+144
Air travel	-43%	-8	Natural gas	+10%	+41
Wastewater processing	-16.7%	-271	Diesel	+2%	+10
Petrol	-3.7%	-3	Wood pellet freight (NEW)		+43

# Targets

Target	23/4FY Performance
Reduce emissions by 80% compared to 2009/10, by 2022	82.8% (excluding wastewater) 72% (including wastewater)
Further reduce Category 1 and 2 emissions by 15.5% (compared to 2022) by 2032	24.7%*  Council officers will work with Toitū to determine whether we must update this target.

\*This is highly dependent on emissions reductions from wastewater treatment and electricity compared to the 2022 baseline.

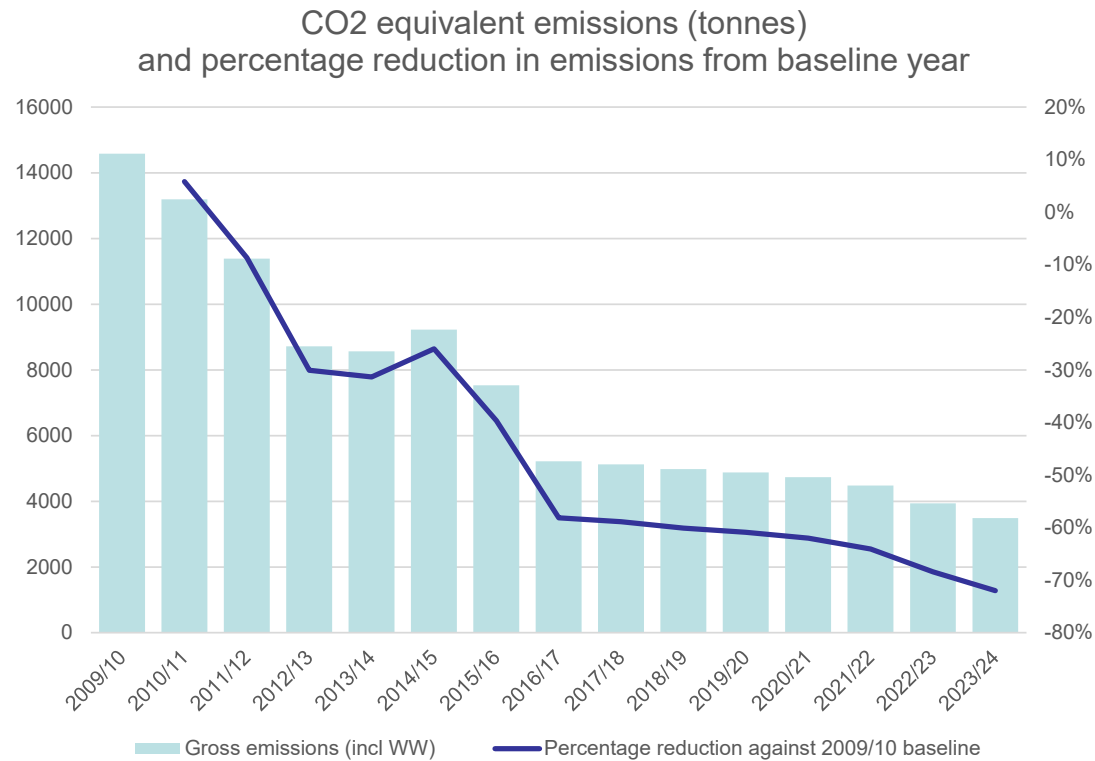
# Progress against target



— % change (excl ww)    
 - - - Target for 2021/22    
 — % reduction (incl ww)

**Kāpiti Coast**  
DISTRICT COUNCIL  
Ma Huri Whakamuri, Ka Tiro Whakamua

# Progress over time



## Update on Category 3-6 emissions

- Staff commuting and wood pellet freight are new sources of Category 3-6 emissions.
- Based on value, Council's supplier based emissions for 23/24FY are 11,851tCO<sub>2</sub>-e which is more than double the 22/23FY.
- Expanding monitoring and reporting of these emissions is a key work programme for the Climate Action team.

## Improving how we use energy

- A cross-Council group has been working with an energy specialist to identify opportunities to improve energy efficiency.
- For example, there is an opportunity to reduce electricity consumption by ~18% saving \$10,000 in electricity used by the Civic Building.
- We are exploring other opportunities across Council assets and services.

## Next steps

- We will notify you if the interim results are different to the final verified results.
- We will continue to work with asset managers to pursue opportunities to reduce emissions.
- We will continue to develop targets for category 3 to 6 emissions for introduction by the end of 2025.

## 8.4 CLIMATE EMERGENCY ACTION FRAMEWORK PROGRESS UPDATE 2024

Kaituhi | Author: **Jamie Young-Drew, Principal Policy Advisor Climate Change**

Kaiwhakamana | Authoriser: **Brendan Owens, Group Manager Customer and Community**

### TE PŪTAKE | PURPOSE

- 1 To provide you with the draft Climate Emergency Action progress update for the period January – December 2024.

### TAUNAKITANGA | RECOMMENDATIONS

- A. That the Climate and Environment Committee note that the Climate Emergency Action progress update 2024 will be finalised and published alongside the verified results from Council's greenhouse gas inventory audit for 23/24FY, which are expected by early-March.

### TŪĀPAPA | BACKGROUND

- 2 Council adopted a Climate Emergency Action Framework in 2021 and is committed to providing regular progress updates on its work to reduce emissions and prepare Kāpiti for climate change.

### HE TAKE | ISSUES

- 3 The 2024 Climate Emergency Action progress update is a 'stocktake' of Council's activities to deliver on its climate commitments. It uses the same format as progress updates from 2022 and 2023.
- 4 Notable updates from the 2024 stocktake include:
  - 4.1 Continuing to reduce Council's corporate emissions through operational improvements to wastewater processing plants, swimming pools and community halls which have also helped to improve energy efficiency and cut costs.
  - 4.2 Becoming the fourth council in New Zealand to be approved for a Climate Action Loan through the Local Government Funding Agency, resulting in reduced lending costs.
  - 4.3 Improving resilience to climate change, such as upgrading transport and stormwater infrastructure to deal with increased surface water.
  - 4.4 Supporting community transition by supporting local businesses on their sustainability journey, allocating Climate Action Grants, facilitating community workshops, and rolling out a waste minimisation education programme across the district.
- 5 In future, these annual Climate Emergency Action updates could also be used to monitor progress against Council's climate change strategy.

### NGĀ KŌWHIRINGA | OPTIONS

- 6 There are no options to consider.

### NGĀ MAHI PANUKU | NEXT STEPS

- 7 Council officers will finalise and publish the Climate Emergency Action progress update 2024 alongside the verified results from Council's greenhouse gas inventory audit 23/24FY.

### NGĀ ĀPITI HANGA | ATTACHMENTS

1. Climate Emergency Action Progress Update 2024

## Climate Emergency Action - progress update 2024

### Council is committed to reporting on climate action

This 2024 progress update is a ‘stocktake’ of the work that Kāpiti Coast District Council is doing to reduce carbon emissions and prepare Kāpiti for climate change. Climate mitigation and adaptation are increasingly part of Council activities, but there is much more for all of us to do.

Kāpiti Coast District Council declared a climate change emergency in 2019 and adopted a Climate Emergency Action Framework in 2021. Council is committed to providing regular updates about the climate action it is taking. For more information, including our progress updates from 2022 and 2023, see: [What we're doing - Kāpiti Coast District Council](#).

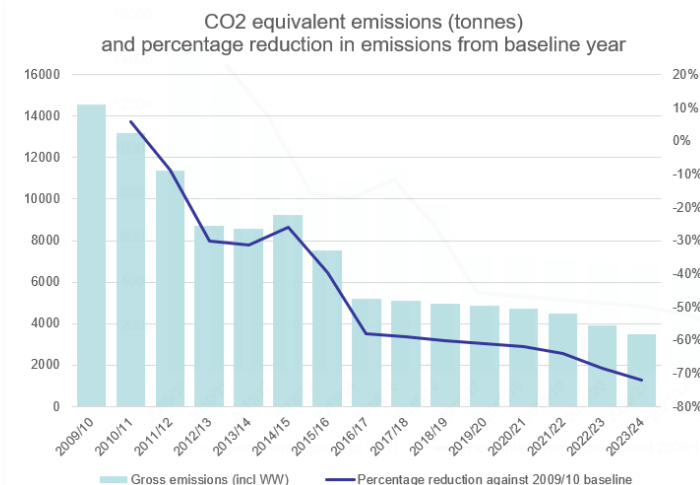
### Key updates from 2024

Climate Emergency Actions undertaken by Council in 2024 include:

- Continuing to **reduce Council’s corporate emissions** (see Fig 1). Operational improvements to wastewater processing plants, swimming pools and community halls have helped to improve energy efficiency and cut costs, in addition to reducing emissions.
- Becoming the fourth council in New Zealand to be approved for a **Climate Action Loan** through the Local Government Funding Agency. Climate Action Loans reward councils for acting on climate change by offering a margin discount to reduce their lending costs.
- Improving **resilience to climate change**, such as upgrading transport and stormwater infrastructure to deal with increased surface water.
- Enabling **community transition** by supporting local businesses on their sustainability journey, allocating Climate Action Grants, facilitating community workshops and continuing our waste minimisation education programme across the district.

For more information, see the full stocktake of actions below.

**Fig 1. Kāpiti Coast District Council corporate emissions 2010-2024**  
[Awaiting final verification]



Climate Emergency Actions, 1 January to 31 December 2024

**Table 1: Corporate emissions reductions**

Action	Council's role	Comment	Status
Undertake annual carbon emission inventories with independent audits by Toitū Envirocare	Asset owner	The annual Toitū Envirocare audit has been completed for 2023/24 [awaiting final verification]. All reports can be found at: <a href="#">GHG emissions reports - Kāpiti Coast District Council</a> .	Ongoing
Utilise Climate Action Loans to reduce council lending costs by receiving a discounted loan margin	Asset owner	In 2024, the Kāpiti Coast District Council became the fourth council in New Zealand to be approved for a Climate Action Loan through the NZ Local Government Funding Agency (LGFA). Climate Action Loans reward borrowers for acting on climate change by offering a margin discount that reduces lending costs. To be eligible for a Climate Action Loan, councils must have a verified corporate emissions reduction target and plan. Each year, Council must update LGFA with its audited emissions inventory and progress against this target.	Underway
Internal Council Green Team	Facilitator	The cross-council team meets monthly to discuss opportunities, share information and encourage coordination across the climate and environment space.	Ongoing
<b>Business operations</b>			
Seek to achieve further reductions in business operations (for example, procurement, water conservation, waste minimisation and energy efficiency), including category 3-6 emissions	Asset owner	Promoting ongoing reductions through procurement will become increasingly important to council's corporate emissions reduction plan. The Sustainability Advisor is working with the procurement team to review procurement policy and promote broader outcomes such as reducing emissions.	Underway
		A stocktake of supplier emissions, investigation into how value chain emissions should be measured for audit, and setting a target for category 3-6 emissions is planned for 2025.	Planned
Convert our fleet to electric vehicles (EVs) and hybrids	Asset owner	During the 2023-24 financial year, we purchased 3 EV pool vehicles (MGs) and a new library van (E-Sprinter) and 2 hybrid (Suzuki) vehicles.	Underway
Purchase electric rubbish truck for civic area litter	Asset owner	The introduction of an electric refuse truck for public litter collection has been approved by Council resolution as one of the five projects to further reduce Council's corporate carbon emissions. A business case will be developed to progress this project.	Planned
Review and consider recommendations provided by Council vehicle audit	Asset owner	At the end of 2024, Council commissioned an audit of its vehicular fleet. The audit focused on type, age, fuel type (car, ute, diesel, petrol, EV) and vehicle utilisation rates. The audit will be used to inform an emissions reduction pathway.	Planned
Reduce emissions from LED streetlights	Asset owner	Nearly 95% of all existing streetlights have been converted to LED. 274 streetlights conversions will take place on the old SH1 now that revocation from NZTA is complete.	Ongoing

Climate Emergency Actions, 1 January to 31 December 2024

Action	Council's role	Comment	Status
Reduce emissions from power usage in halls by using LEDs in any renewal or new works	Asset owner	The Property team has a policy to replace all lights with energy saving LEDs whenever there is a project or renewal that involves lighting. The same applies to the installation of insulation in halls where roof replacements or ceiling renewals are planned. These actions will reduce energy consumption for the halls.  In 2024, Property installed LED lighting in Raumati South, Paraparaumu Memorial, Waikanae Memorial, Waikanae Community and Reikorangi Halls. Remaining halls requiring LED lighting to be installed are Paekākāriki, Mazengarb, Waikanae Beach and Ōtaki Halls.	Ongoing
Seek to achieve further reductions in business operations (for example, procurement, water conservation, waste minimisation and energy efficiency)	Asset owner	The Property team has converted the heat pump at the Paraparaumu Memorial Hall from gas to electricity. They have a policy to upgrade lighting to LED, and to provide insulation as renewal of properties occur. Repurposing or recycling material from projects where possible continues to be a priority for the Property team, for example: <ul style="list-style-type: none"> <li>The commercial kitchen units from the old Paraparaumu Community Centre will be repurposed in the Paekākāriki and Ōtaki Hall kitchens.</li> <li>The Poppy Room in Waikanae Memorial Hall was all done with recycled or repurposed equipment.</li> </ul>	Ongoing
Move to lowering power consumption through IT tools	Asset owner	<ul style="list-style-type: none"> <li>The move from desktops to laptops that have enabled hibernation modes has reduced the number of computer devices.</li> <li>Encouragement to reduce printing where possible.</li> <li>Old equipment goes to an organisation that refurbishes old desktops, laptops, etc and redistributes those to non-profits.</li> <li>Installation of motion sensors and timers to control power consumption.</li> </ul>	Ongoing
Use Waste Minimisation Plans to reduce and repurpose waste	Asset Owner	As part of project planning, the Property team works to implement Waste Minimisation Plans and repurpose any materials that are removed or demolished. Waste Minimisation Plans are required for larger projects, for example Ōtaki Civic Theatre Seismic Strengthening.	Ongoing
The Project Management Office are trialling the use of 'Save Board'	Asset owner	'Save Board', a product made of recycled tetrapacks, was installed on site as hoardings for the demolition of the Te Newhanga Kāpiti Community Centre for just under 12 months. While the material lasted well, there were signs of minor degeneration, especially on the edges, with the product generally performing well. With the hoardings removed, the sheets are to be recycled into other projects.	Complete
Install solar hub on the Council's civic buildings in Paraparaumu	Asset owner	The solar hub project at the Civic Centre was included in the Long Term Plan 2024-27. Council is currently exploring options and timings to align with other upgrades to the civic buildings.	Underway

Climate Emergency Actions, 1 January to 31 December 2024

Action	Council's role	Comment	Status
Ōtaki Pool – Gas boiler to heatpump conversion	Asset owner	This action is part of the Ōtaki Pool Upgrades that are in Developed Design stage. Next stage is Resource Consent with construction planned for 2027/28.	Underway
Waikanae Pool – Gas boiler to heatpump conversion	Asset owner	This action cannot be undertaken in isolation as it requires a significant upgrade of premises and plant, accordingly the conversion will be considered as part of long-term asset renewal planning.	Planned
Waikanae Pool – Plant upgrades, the installation of variable speed drives to reduce energy consumption	Asset Owner	Three variable speed drives (VSDs) have been installed to control the pool services pumps. By adjusting the motor speed to the actual load requirements, VSDs can significantly cut down on energy usage helping reduce carbon footprints.	Complete
Coastlands Aquatic Centre – Investigating several opportunities to monitor energy consumption to inform target savings initiatives	Asset Owner	The Aquatics team is investigating: <ul style="list-style-type: none"> <li>• appropriate energy monitoring via upgrades to the Building Management System</li> <li>• changes in pool water management systems that will deliver efficiencies with no negative impact on water quality.</li> </ul>	Ongoing
Investigate options to reduce emissions from wastewater treatment	Asset owner	Council is investigating options, such as pyrolysis, to manage the sludge from the wastewater plant alongside the solid waste team.	Underway
Upgrade the aeration blowers at the Paraparaumu Wastewater Treatment Plant for increased energy efficiency	Asset owner	This has been undertaken.	Complete
Low mow trials at Raumati Road and Pharazyn Reserve	Asset owner	Trials are underway at high profile park sites, whereby the grass will be mown only a few times a year to monitor community buy in and check any issues. This will reduce mowing and therefore carbon emissions through fuel. Council is exploring options to expand to further sites.	Ongoing
<b>Carbon sequestration</b>			
Plant 11 more hectares of trees at the Waikanae Dam	Asset owner	Planting in the farm area was completed in mid-2024, with native bush now emerging in the old harvested pine block. Planting trees at the Waikanae Dam reduces net emissions through sequestration, while also protecting land, water quality and improving biodiversity. The next phase is ongoing weed and pest control.	Complete
Investigate opportunities for further sequestration through tree planting on Council-owned land	Asset owner	A desktop exercise was undertaken in 2023 to identify Council-owned land that could be used for further carbon sequestration. Council will now conduct a detailed analysis to refine identified land based on site-specific suitability.	Underway

Climate Emergency Actions, 1 January to 31 December 2024

**Table 2: Districtwide emissions reduction**

Action	Council's role	Comment	Status
Participate in the development of the Wellington Regional Leadership Committee's Regional Emissions Reduction Plan	Advocate	The Regional Emissions Reduction Plan 2024-30 was delivered in March 2024 and formally approved by the Wellington Regional Leadership Committee for action. Actions are now being implemented. For more information: <a href="#">Regional Emissions Reduction Plan 2024-2030 - WRLC</a>	Complete
Develop a climate mitigation strategy to provide overall coherence and direction to meeting the aspirational districtwide 2040 net zero emissions goal	Facilitator	Following discussions on the best approach to climate strategy, we are proceeding with the development of a mitigation (emissions reduction) sub strategy in 2025, informed by previous work developing an initial direction of travel document.	Underway
Develop a district emissions model for setting a target through the Climate and Resilience Strategy and to develop pathways to reduce district emissions	Researcher	The model has been completed and is informing the Climate and Resilience Strategy. The climate mitigation sub strategy (see above) will include the development of pathways towards the aspirational districtwide 2040 net zero emissions target.	Complete
Participate in the Local Emissions Data Platform Initiative to develop a standardised approach to community greenhouse gas emissions reporting and modelling	Advocate	In 2024, Kāpiti Coast District Council was one of 19 councils that joined the Local Emissions Data Platform Initiative to develop a more cost-effective approach to modelling emissions across different towns, districts, and regions. The initiative will reduce costs for individual councils, increase consistency across regions, and improve local government climate-related decision-making. Initial outputs are expected in 2025.	Underway
Work with local business under the Economic Development Strategy to support sustainable practice	Facilitator	Supporting a sustainable economy is also a proposed action in the refreshed Economic Development Strategy. Established in 2023, Pakihi Toitū o Kāpiti (PTOK) is a sustainable business network with around 80 members and growing. The PTOK network action plan is currently being rescoped in response to economic conditions, ensuring businesses can implement ecological goals that align with their financial objectives.	Ongoing
Work with communities to develop town centre intensification plans that include a low-carbon focus	Facilitator	Work is underway to develop town centre plans for Paraparaumu, Waikanae and Ōtaki, with plans for remaining town centres in the district to be developed over time. The plans will be informed by community input, including aspirations identified through Vision Kāpiti, and will incorporate environmental, low carbon and climate resilient outcomes.	Underway
Develop a monitoring framework to measure how we are delivering on the principles of the growth strategy <i>Te tupu pai</i>	Facilitator	The first stage of Vision Kāpiti was completed in late 2024 identifying community needs and aspirations across the themes of People, Place and Partnership. An outcomes framework is being developed over the next 12 months to help track and report progress against Vision Kāpiti and community outcomes. The design of the framework is intended to integrate monitoring against council's key strategies, including <i>Te tupu pai: Growing Well</i> .	Planned

Climate Emergency Actions, 1 January to 31 December 2024

Action	Council's role	Comment	Status
Develop an accessibility strategy	Asset Owner	Feedback from Council's upcoming series of 'Vision 2060' workshop is required to progress this project further.	Planned
The Intensification Plan change (Plan Change 2) will enable greater density closer to services and rapid transport hubs in urban areas	Facilitator	The plan became operative from 1 September 2023.	Complete
Update urban design guidelines and Land Development Minimum Requirements (LDMR)	Facilitator	Plan Change 2 introduces new guidelines for medium density buildings in residential zones, and taller buildings in centre zones. The LDMR is also included in Plan Change 2.	Complete
<b>Access and transport</b>			
Develop a transport emissions model to refine opportunities to reduce related emissions	Researcher	The model has been completed and will be used to inform the development of Council's climate mitigation sub strategy in 2025.	Complete
Encourage active transport (eg bike riding or walking) through footpaths, shared paths, on-road cycle lanes, and off-road cycleways that are safe and connected	Asset owner	Council is reviewing the commuter walking and cycling network to produce a 10-year programme of works. Projects will include safety improvements and new connections. A draft plan is complete and feedback is being sought from stakeholders.	Underway
		On-road cycle lane renewals (green surfacing and demarcation) are complete, and Council officers continue to provide and promote active transport facilities on the old SH1 now that revocation is complete.	Complete
		Council has developed and adopted a Speed Management Plan that slows traffic near schools and other civic areas. The purpose is to increase safety of cycling and pedestrians, and this improves opportunities for modal shift. Implementation and consultation for the sites is ongoing.	Underway
		Renewed the Wharemauku Pathway connecting Raumati to Coastlands, resurfaced the Waikanae River trail, and led an upgrade of the Te Ara o Whareroa shared path between Paekākāriki and Raumati South with funding from Waka Kotahi.	Complete
		Council has developed a cycling map for the Kāpiti Coast.	Complete
		New cycle stand installations were delivered at Paekākāriki Township, the Paraparaumu Transport Hub, Waikanae township and locky docks outside Council on Rimu Road.	Complete
Continue to deliver our transport safety education programme so network users are confident and safe	Educator	Council delivers a wide range of transport safety programmes. Recent initiatives have included: <ul style="list-style-type: none"> <li>• Pedal Ready at Kapakapanui, Kena Kena, and Raumati South schools</li> </ul>	Underway

Climate Emergency Actions, 1 January to 31 December 2024

Action	Council's role	Comment	Status
		<ul style="list-style-type: none"> <li>Be Safe Be Seen, which included the distribution of over 1000 reflective backpack covers</li> <li>the annual School Patrol Parade.</li> </ul>	
We take every opportunity to advocate to NZTA, the Ministry of Transport and KiwiRail, and participate in advisory groups to encourage and support the development of a low-carbon transport system	Advocate	Council officers are regularly in attendance at the Wellington regional meetings for NZTA's Te Ringa Maimoa Transport Excellence Partnership (formerly known as the Road Efficiency Group). These meetings are two-monthly.	Ongoing
		The Wellington Transport Alliance (WTA) was established in July 2022. The aim of the WTA is to deliver a safer, more efficient transport system for the region. Council officers attended the first meeting of the WTA late last year. These meetings will continue each quarter.	Ongoing
We take every opportunity to advocate to GWRC and participate in regional groups for the development of an improved public transport system	Advocate	Mayor Janet Holborow is the Council representative to the Regional Transport Committee (RTC), which meet quarterly to discuss regional transport issues.	Ongoing
		Council officers are regularly in attendance at the quarterly GWRC Technical Advisory Group (TAG) meetings.	Ongoing
Encourage and enable uptake of lower emissions electric vehicles (EVs) in the district by supporting a growing network of charging stations	Facilitator	Council is exploring the development of a district EV Charging Policy that aligns with the Destination Management Plan.	Planned
<b>Waste minimisation</b>			
Waste Education is continuously delivered for schools, communities, and businesses	Educator	In 2024, 109 Love Your Compost vouchers valued at \$40 were issued to households who completed a home food scraps/composting survey. The Love Your Compost (LYC) campaign is a home composting behaviour change programme targeting residential food scraps and garden waste. LYC workshops in spring 2024 were contracted to an external third party who has been heavily involved in delivering prior year's workshops. 77 attendees attended two days of workshops.	Ongoing
		Workshops on reducing waste, recycling and reducing food waste were delivered for/to different community groups, reaching 559 residents in Jan-June 2024, and a further 361 residents in July-December 2024. Total interactions for the 2024 calendar year are 920.	Ongoing
		Zero Waste Education Programme delivery has been contracted to EERST.	Ongoing
		A waste free period session was delivered to 200 Kāpiti College students to support young wāhine to use more reusable menstrual products now and throughout their lives.	Ongoing

Climate Emergency Actions, 1 January to 31 December 2024

Action	Council's role	Comment	Status
		In early 2024, Council officers, in conjunction with officers from Porirua City Council, initiated the formation of a Wellington region Build Cluster inspired by SBN 'build out waste' resources and similar groups in existence elsewhere in Aotearoa. The Build Cluster brings together businesses, councils and other industry professionals to tackle the approx 50% of all Kāpiti region waste that originates from construction and demolition activities and projects. Three meetings were held in 2024 calendar year, and bi-monthly meets are scheduled for 2025.	Ongoing
		A cloth nappy trial session was delivered to Kāpiti Children's Centre, and a cloth nappy kit was provided to the centre to be used for 3 months.	Complete
Support community-led waste minimisation projects and seed funding for business waste reduction	Funder	2024-2025 FY Waste Levy Grants totalling \$50k have been awarded to 15 waste reduction projects by the Council Grants Subcommittee. More information can be found at: <a href="#">Waste levy grants - Kāpiti Coast District Council</a> . Early planning is underway for 2025-2026 FY waste levy grants, which will open earlier in 2025 to ensure the approval process can complete prior to local government elections.	Underway
Support effective waste management and minimisation at large events through implementation of the solid waste bylaw, and provide support with resource bookings, advice, planning meetings etc. Investigate options to increase number of post-event waste audits being submitted.	Facilitator/Funder	Mary Potter Hospice's key annual fundraiser – Strawberry Fair – raised over \$100k for the charity, while striving towards being a zero-waste event. Event organisers have agreed to contribute to a case study showing how they are making large community events towards zero-waste.	Underway
	Facilitator/Regulator	19 events were supported with bookable waste resources, advice on event management and the development of waste minimisation plans, and post-event waste analyses.	Ongoing
The Otaihanga and the Ōtaki Transfer Stations provide recovery, recycling, and disposal services through lease to operate agreements	Asset owner	The number of visitors to the recycling area at Otaihanga averages 110 people per day. On average, each visitor disposes of around 23kg of recyclables. This will be revised in a couple of years.	Ongoing
		Both Transfer Stations have registered to the regulated product stewardship 'Tyrewise' national scheme. From early 2025 people will be able to dropoff up to five end of life tyres at a time for free. Terms and criteria apply. More information: <a href="#">What's new - Kāpiti Coast joins free tyre recycling scheme - Kāpiti Coast District Council</a>	Underway
A new community-focused Zero Waste Hub (resource recovery centre) has been established, with an initial focus on construction and demolition	Asset owner	Otaihanga Zero Waste soft launched in Winter 2024, with an official launch in September 2024. More information: <a href="#">Otaihanga Zero Waste   Community recycling and resource recovery centre in Kapiti - Sustainability Trust Wellington</a>	Ongoing

Climate Emergency Actions, 1 January to 31 December 2024

Action	Council's role	Comment	Status
waste as these are the region's largest waste streams		Procurement is underway for the supply of a 20 x 15m secure, covered building at Otaihanga Zero Waste for the purpose of diverting recovered material storage, processing and sale – working title 'The Shed at Otaihanga Zero Waste'.	Underway
New Bylaw requirements are in force, requiring waste minimisation plans for multi-unit developments and large events	Regulator	Early work with the Development Control and Resource Consent Teams and with the Waste Minimisation Team is occurring to apply relevant bylaws to the processing of new consent applications.	Ongoing
		Internal work is underway to consult on and subsequently set a Bylaw control threshold value, so that Building Consent applicants for developments above a certain value will be required to submit, monitor and audit waste management plans to council.	Underway
	Educator	A waste calculator tool to help Multi Unit Development applicants undertake waste management and minimisation plans has been regionally developed.	Ongoing

**Table 3: Adapting Council services and activities**

Action	Council's role	Comment	Status
Participate in the development of the Wellington Regional Growth Framework: Wellington Region Climate Change Impact Assessment (WRCCIA) - Phase 1 of the Regional Adaptation Plan	Advocate	The Wellington Regional Climate Change Impact Assessment final report was delivered in February 2024. It sets out risks and impacts associated with climate change across a range of domains: built environment, natural environment, human/social, economy. Scoping is now underway for Phase 2 of the Regional Adaption Project, which includes developing a regional adaptation framework and adaptation toolkit. More information: <a href="#">Regional Adaptation Project - WRLC</a> .	Complete
<b>Stormwater and coastal assets</b>			
Prioritised consideration of green infrastructure for stormwater, where possible	Asset owner	The Low Impact Design mandate which sits under the District Plan supports the provision of green infrastructure and treatment. Kāpiti continues to avoid piping existing open drains in association with land development.	Ongoing
Undertake regular stormwater drain inspections and maintenance (at a cost of about \$700,000 per year)	Asset owner	As part of our urban stormwater drain network is open waterways (approximately 40km), we recently completed 22.5km of open drain / stream cleaning (gravel extraction, machine and hand cleaning).	Underway
		An application for a global consent has been lodged for channel maintenance to ensure conveyance of stormwater.	Underway

Climate Emergency Actions, 1 January to 31 December 2024

Action	Council's role	Comment	Status
		Emergency works at the Ngarara Stream to mitigate risks associated with Council owned wastewater infrastructure and mains gas line has been completed.	Complete
The proposed combination of new assets and upgrades to the stormwater network will increase the network's ability to manage surface water runoff	Asset owner	Upgrades at Riwai Street (Stage 2), Matene/Matai and Rauparaha Street and Jeep Road/Clunie Ave are finished.	Complete
		The other upgrade projects about to commence include including upgrade of Kenakena pumpstation and bridge, due to be completed in June 2025.	Underway
		Amohia Catchment Stage 1 stormwater project delivering increased capacity pipes along Iver Trask Place, Kāpiti Road and Amohia Street is finished.	Complete
Advise on the maintenance of access and transport stormwater infrastructure. Roads act as secondary flow paths and are important for the stormwater network. Sump cleaning and replacement will increase the network's ability to manage surface water runoff.	Asset owner	<p>The roading and stormwater teams are jointly carrying out the following projects, and the majority are finished:</p> <ul style="list-style-type: none"> <li>• Districtwide sump inspections</li> <li>• Sump upgrades</li> <li>• Sump lead inspections and renewals, which include up-sizing as required.</li> </ul>	Ongoing
Manage stormwater inflow and infiltration through down pipes, manholes and pipe networks to ensure the district's wastewater activity continues to be resilient. Investigations to identify inflow and infiltration sources, coupled with maintenance of pipes and manholes, will minimise infiltration into the wastewater network. This includes instances of stormwater infiltration into the wastewater network on private properties.	Asset owner	<p>Visual inspections were carried out across the district's 34 stormwater catchments. From these inspections, stormwater inflow into the wastewater network was identified in nearly 400 locations. Smoke testing was then carried out in 5 of the stormwater catchments. This testing identified ~20% more direct inflow sites than the visual inspections. Smoke testing is planned for the remaining 29 catchments and a programme has been developed.</p> <p>Further work is currently on hold to allow for integrated catchment management process to guide forward prioritisation and alignment of management actions.</p>	Underway
Explore the development of a new bylaw to mandate certain practices on private properties	Regulator	Bylaw development has not yet commenced.	Planned
Advocate to GWRC for improved flood protection in the rivers and streams under their jurisdiction under the Kāpiti Coast Watercourses Agreement	Advocate	No further comment.	Ongoing
During significant rainfall events, parks and open spaces provide storage for stormwater until the stormwater network can manage the runoff	Asset owner	No further comment.	Ongoing
Raumati seawall	Asset owner	The 3.1 km Raumati seawall has exceeded its design life. This project has a completed detailed design and a staged renewal programme is being developed.	Underway

Climate Emergency Actions, 1 January to 31 December 2024

Action	Council's role	Comment	Status
Wharemauku block wall	Asset owner	A long-term solution is being investigated and discussions with affected property owners are being undertaken. Currently applying for consent to continue occupation of coastal marine area.	Underway
Paekākāriki seawall	Asset owner	Designs are being further developed.	Underway
<b>Parks and property</b>			
A global consent for beach access maintenance has been obtained in late 2023	Asset owner	The KCDC Global Consent for Beach Accessways enables work in consultation with mana whenua to orientate accessways vulnerable to sand blow out to be orientated in a southerly aspect.	Complete
		Works to orientate the beach accessways south will be programmed and staged. Accessways are reoriented during maintenance where possible, or as opportunities arise.	Planned
Alternative tracks have been developed along Waikanae River	Asset owner	Two tracks have been built in sections of the river prone to damage from flooding. A temporary track is in place at a washout and work will progress subject to a regional council resource consent to adjust gravel in the river.	Ongoing
Playgrounds are being installed with shade sails	Asset owner	In anticipation of more sunny days during summer, most playgrounds are being provided with shade sails or natural shade as they are upgraded.	Ongoing
Increased water fountains installed (3-4 per annum)	Asset owner	Fountains have been installed at Victor Weggery Reserve, Tennis Court Reserve, 2x at Mazengarb Hockey Turf. Te Atiawa Reserve is next.	Ongoing
Grass management improvements	Asset owner	Moisture monitors have been installed in the sports fields at Mazengarb and Waikanae Parks to tailor irrigation systems to reduce water use.	Ongoing
		Trial of warm season grasses including couch is to be started in early 2024 at Jim Cooke sports fields. These grasses are more drought tolerant and minimise bore water use.	Planned
		Wetting agent chemicals are being applied on sports fields to hold moisture. Growth retardants are being trialled on Awa Tapu Cemetery to reduce mowing and increase drought tolerance.	Ongoing
		Slow-release fertilisers have started to be used instead of traditional agricultural fertilizers. This reduces leaching through the soil layers, is more efficient with amount applied and reduces flow into rivers.	Ongoing

Climate Emergency Actions, 1 January to 31 December 2024

Action	Council's role	Comment	Status
<b>Access and transport</b>			
Construction and maintenance projects provide opportunities for climate change adaptation. We have planned a range of improvements to increase the transport network's resilience. Some of these, such as converting low-volume sumps and culverts to higher capacity, will help manage surface water runoff.	Asset owner	There have been over 80 sumps reconstructed since July 2021 to improve functionality of waterflow in high rainfall events.	Ongoing
		Culverts on the Akatarawa Road have been condition assessed with cameras to identify at high-risk assets and these are being programmed for replacement over the next 2-3 years. There have been 13 culverts replaced on this route so far.	Ongoing
Research the durability of construction methods and materials, particularly in relation to more extreme rainfall events and rising groundwater.	Researcher	Council commissioned a preliminary paper on material durability from external technical experts. Council officers are now considering how the findings will be incorporated into future project builds.	Complete
Look for opportunities to build resilience. As the expressways are built through the district, we are working alongside NZTA to increase resilience, for example by strengthening bridges and building secondary access routes.	Advocate	<p>The Mackays to Peka Peka Revocation project has been completed. Handover to Council occurred mid-2024.</p> <p>Council is continuing discussions with NZTA on the Peka Peka to Ōtaki Revocation project, which is to prepare the old SH to be handed over to Council for local road use. This includes the Te Horo straights and Ōtaki township. Detailed design will be completed in early 2025, with construction programmed once the detailed design has been confirmed.</p> <p>These two revocation projects provide a key second north to south route through the majority of our district and increased resilience ahead of any natural disaster.</p> <p>It is expected that the Environment Court will issue a final decision on the Ōtaki to North of Levin Highway shortly. Council officers are in regular discussions with NZTA with regards to the project which also includes investigating an alternate design for the Taylors Road arrangement to ensure a better resilience, safety and efficiency outcome.</p>	Ongoing
Geohazard Register development. Aim to develop a list of sites with high risk of landslide, dropout, river scour and similar geological hazards. These would be inspected on a regular frequency. Project opportunities would be generated from the register to mitigate the risk and make our network more resilience to high rainfall events.	Asset owner	Council included the development of the geohazard register in the 2024-27 Activity Management Plan – with the aim that understanding our risk area and implementing projects to reduce the risk will increase network resilience. Council is underway with procurement of from Geological specialists to develop the register and populate the known hazard sites.	Ongoing
When assessing development applications look for opportunities to provide improved connections and infrastructure to facilitate mode shift.	Asset owner/ Regulatory	The Kāpiti Coast District Plan has a permitted activity standard that all new roads provide walking and cycling infrastructure. Council Sustainable Transport Strategy has outcomes to improve access and connectivity, address climate change and ensure a resilient transport network.	Ongoing

Climate Emergency Actions, 1 January to 31 December 2024

Action	Council's role	Comment	Status
<b>Water supply</b>			
Several major projects are planned to improve water supply capacity, reliability and resilience. Examples include the new clarifier at the Waikanae Water Treatment Plant, searching for new water sources (bores) in Ōtaki, and developing new reservoir sites in Ōtaki	Asset owner	With co-funding from Kainga Ora (Infrastructure Acceleration Fund), funds have been allocated for a 5.5 million litre reservoir in Ōtaki (Te Manuao Rd) to serve Ōtaki Central and Ōtaki Beach. Construction is underway and the new pipework is nearly complete. Site investigation/valuation is underway for a new Waikanae North and Waitohu Valley Reservoir.	Underway
		Construction is underway for the new clarifier at the Waikanae Water Treatment Plant (WTP). Soak test expected March 2025. Installation of the static mixer and raw water pipework is complete. Chlorine building completed and fitout is underway.	Underway
		Additional work is planned this year at the Tasman Road WTP. Cultural Impact Assessment and consent support have been received from mana whenua. Bore drilling scheduled to start March/April 2025. At the Rangiuuru WTP, a new precast chlorine building and on-site emergency generator fully enclosed against weather have been completed. A resource consent for water extraction has been submitted.	Underway
Support water conservation and storage	Asset owner	The Water Conservation and Tradewaste Officer investigates reduction of water use through metering. Smart meters are being rolled out for difficult-to-read sites (due to dogs, locked gates etc). Installing smart meters on industrial sites provides more accurate information for water demand and tradewaste purposes.	Ongoing
Undertake an ongoing water supply leak detection programme, targeting areas with trends of increasing water usage	Asset owner	Leak detection has been carried out across Waikanae, Ōtaki Central, Ōtaki Beach and the Waitohu Plain. Work continues to progress across all water supplies. The information collected is used to instigate repairs and inform renewals.	Ongoing
		Updating the sustainable water use strategy and conservation plans. A review of existing plans is underway.	Ongoing
		The targeted rate for rainwater tank purchases for private properties built before 2007 is currently on hold.	On hold
Assess the condition and performance of water supply networks and specific sites and procure expert planning advice	Asset owner	Condition assessments of water supply pump stations and above ground bridge crossings have been completed and an improvement schedule is being costed.	Complete
Implement a range of planned actions at each water supply site to improve water treatment, storage, and structural integrity	Asset owner	Inspections and safety checks have been undertaken on the roof sealing at the Waitohu, Waikanae, and Otaihanga water reservoirs.	Complete

Climate Emergency Actions, 1 January to 31 December 2024

Action	Council's role	Comment	Status
Undertake a range of planned water supply renewals across the district, mainly to pipes, pump stations and storage facilities	Asset owner	Replacement of existing water pipes on Te Moana Road, Waikanae and in Paekākāriki has been undertaken.	Complete
Installation of a new fire main in Ōtaki	Asset owner	Stage 1 of a fire main has been installed in Ōtaki	Complete
		Stage 2 of the fire main installation in Ōtaki is near completion.	Ongoing
Plant 11 more hectares of trees at the Waikanae Dam to protect land and water quality	Asset owner	See Table 1 for this action update. Tree planting also helps to sequester carbon.	Complete
Remove gravel at the Waikanae water supply intake	Asset owner	Gravel removal will reduce blockages in the network, particularly during large storm events. Work has been approved by mana whenua and will be completed pending suitable weather.	Underway
At the consenting stage, advise on new developments to ensure new water supply infrastructure aligns with national, regional, and local standards	Asset owner	Reviewing the sustainable water use strategy will review the water and wastewater requirements. All new applications are assessed to meet this target.	Ongoing
<b>Wastewater</b>			
Capacity studies, condition assessments and performance assessments identify urgent issues and inform activity plans for the wastewater activity	Asset owner	CCTV studies have been undertaken to identify weak points in the network that could be susceptible to leakage. Approximately 30% of the Ōtaki wastewater network has been assessed. Paraparaumu/Raumati wastewater and stormwater networks have also been delivered, with 40kms tested via the smoke and CCTV to look for defects. The programme of repairs has been submitted through the long term plan, with a focus on design and small fixes in 2024/25 and larger renewals in 2025/26.	Underway
Educate people on wastewater conservation to minimise demands on the wastewater network, making it easier to accommodate new demands from climate change and growth	Education	A new campaign is coming to highlight what flushes down the network.	Planned
We have planned a range of wastewater network renewals and builds across the district. For example, we have allocated \$6.5 million for upgrades at both of our wastewater treatment plants and \$3.6 million for other upgrades to the network. The range of projects will improve storage and treatment processes in wet weather and	Asset owner	The Ōtaki Wastewater Treatment Plant (WWTP) oxidation pond desludging has been completed. Installation of an aeration pond inflow bypass pipe has also been completed to enable de-gritting of the aeration pond (completed Feb 2023). This work, plus the inlet screen renewal, will restore the aeration pond design capacity. These projects will help improve the wastewater treatment and effluent discharge quality.	Complete
		There are new investigations to improve land treatment processes at the Ōtaki WWTP. Upgrade of the land distribution treatment area (LDTA) is underway and a trial	Underway

Climate Emergency Actions, 1 January to 31 December 2024

Action	Council's role	Comment	Status
minimise inflows and overflows across the network.		run of the new discharge system has been completed. Consent is underway for new sprinkler-based discharge system and refurbishment of the discharge area.	
		Design completed for concreting the base of the Ōtaki WWTP's Aeration lagoon. Procurement is underway with a plan to complete the work by March 2025.	Underway
		The Paraparaumu WWTP has completed upsizing the current 25,000 m <sup>3</sup> sewer overflow pond to 40,000 m <sup>3</sup> and lining it with impervious High Density Polyethylene (HDPE) liner.	Complete
		The re-lining of the stormwater overflow pond is complete at the Waikanae terminal pump station.	Complete
		The old sludge pits at the Paraparaumu Wastewater Treatment Plan have been dug out, sludge removed, and the pits are being replaced with clean fill. Completion is subject to availability to suitable fill material. The lab is continuing to monitor water quality.	Underway
<b>Waste minimisation</b>			
Maintain and renew existing infrastructure for waste minimisation and disposal services	Asset owner	Asset management planning considers projected climate change impacts, particularly high winds and site flooding. Stormwater capital works were undertaken in February at the Otaihangā Resource Recovery Facility pond to prevent (further) future flooding of the site during severe rain events.	Complete

**Table 4: Supporting community adaptation**

Action	Council's role	Comment	Status
We are working with our iwi partners and technical experts to develop a new Stormwater Management Framework	Facilitator	<p>Council adopted the Stormwater Management Framework (SMF) vision, values, and outcomes on 28 July 2022. Council sought submissions from the community before it was adopted by Council. Council is now:</p> <ul style="list-style-type: none"> <li>working with our iwi partners and technical experts to develop a Schedule N Stormwater Management Strategy as a requirement of the GWRC proposed Natural Resources Plan.</li> <li>applying to GWRC for a Global Stormwater Discharge Consent. Council will be asking that this application be publicly notified to ensure the public is able to engage with this process as the application seeks to set community stormwater discharge quality requirements for the next 35 years.</li> </ul> <p><a href="#">More information on the SMF can be found here.</a></p>	Underway

Climate Emergency Actions, 1 January to 31 December 2024

Action	Council's role	Comment	Status
We are updating our flood hazard models, and these will include the most recent climate change predictions and rising groundwater levels	Facilitator	This work is progressing well and work is currently underway to socialise draft updated flood hazard maps with community and stakeholders to mid-2025.	Underway
The Takutai Kāpiti project team and technical advisory group, alongside the Coastal Advisory Panel (made up of iwi, community, and key stakeholders) will develop coastal adaptation recommendations to guide how we build our sustainability and resilience to rising sea levels and coastal erosion	Facilitator	Following community workshops in 2023, the Coastal Advisory Panel (CAP) hosted further feedback sessions for the Central, Raumati and Paekākāriki Adaptation Areas in early 2024, followed by a district-wide final engagement session in April 2024. The CAP final recommendations report was presented to Council in June 2024.	Complete
Coastal hazard assessment(s)	Facilitator	Coastal hazard risk assessments, determining what is projected to be at risk if adaptation is not undertaken, were completed as part of the Takutai Kāpiti project.	Complete

**Table 5: Supporting community transition**

Action	Council's role	Comment	Status
<b>Mana whenua partners</b>			
Provide mana whenua with resources and infrastructure to enable and support emissions reductions, low-carbon living and climate change adaptation	Facilitator	Council are looking to support mana whenua aspirations where opportunities present.	Ongoing
We partner with mana whenua to design and implement key projects	Facilitator	There are a number of current projects with mana whenua involvement, including but not limited to the development and implementation of cultural monitoring frameworks to measure environmental quality, and providing advice on consenting conditions for water, wastewater, stormwater, solid waste activities, and special infrastructure projects. Council is looking for future opportunities to partner.	Ongoing
We offer marae maintenance and development grants, often used to undertake sustainability and resilience initiatives	Funder	We look to support marae for emergency and resilience response.	Ongoing
<b>Communities and businesses</b>			
Supporting climate action - Climate Action Grants	Funder	The Climate Action Grants allocated \$100,000 of central government funding in 2023, and a further \$100,000 in 2024, towards community and business projects across active transport, food waste collection, nature restoration, community circular	Complete

Climate Emergency Actions, 1 January to 31 December 2024

Action	Council's role	Comment	Status
		economy initiatives, local biochar projects, and more. Full list of recipients: <a href="#">Climate action grants - Kāpiti Coast District Council (kapiticoast.govt.nz)</a>	
Sustainable Economic Development	Facilitator/Educator	<p>Council, in partnership with the Economic Development Kotahitanga Board and other key stakeholders, continues to look for opportunities to promote sustainability. This includes:</p> <ul style="list-style-type: none"> <li>Supporting hapū and landholders in their aspirations for regenerative food production and kaitiakitanga</li> <li>Researching and piloting regenerative horticulture on appropriate land blocks</li> <li>Ensuring the food and beverage sector is well engaged and represented in Pakihi Toitū o Kāpiti.</li> </ul>	Ongoing
Educating businesses about emissions reductions and the projected impacts of climate change. Pakihi Toitū o Kāpiti, the Sustainable Business Network, is a local network and online resource to support businesses on their sustainability journey.	Facilitator/Educator	<p>Pakihi Toitū o Kāpiti started in July 2022 and continues to support the business community with their sustainability goals. Around 80 businesses have enrolled in the network to date, many of which have since drafted and published sustainability policies and plans.</p> <p>A new Business Kāpiti website was released in December 2024, with updated resources, case studies and articles. It includes:</p> <ul style="list-style-type: none"> <li>Regular articles discussing sustainability issues and opportunities from a local business perspective</li> <li>Case studies showcasing local businesses undertaking amazing work to decrease their footprints</li> <li>Guidance and resources for businesses that are just starting their sustainability journey</li> <li>Opportunities to participate in sustainability related workshops</li> </ul>	Ongoing
We are working with the Wairarapa councils to provide a Healthy Homes Kit through our local libraries	Educator	Developing the Healthy Homes kit included approval by the Accessibility Advisory Committee. We now have 9 kits available through our libraries, with high uptake and great feedback through 2024.	Ongoing
We promote climate change sustainability and resilience to Council staff and are now starting a wider public campaign	Educator	Council completed a staff travel and climate survey in 2024, following an inaugural survey in 2023, and initiatives are being planned to support staff to take sustainable commuting options. Other internal initiatives include the development of climate education resources for staff, including a "Climate 101" workshop series. We are working on a range of public climate education initiatives for 2025, including aligning/working with other education campaigns and providers in the region.	Ongoing

Climate Emergency Actions, 1 January to 31 December 2024

Action	Council's role	Comment	Status
Our Sustainable September (previously No 8 Wire) programme offers free and affordable events to encourage community resilience, DIY resourcefulness and environmental responsibility through fun, hands-on events and workshops.	Educator	In 2024, Council's Sustainable September (previously No 8 Wire) programme supported over 30 community-led sustainability events and workshops that attracted more than 850 participants. Planning will soon commence for the 2025 programme.	Ongoing
We support Neighbours Day, an annual event designed to strengthen our communities and make them healthier, safer, and more resilient.	Facilitator	Neighbours Day is held in March every year. The Connected Communities Team is currently preparing for the March 2025 Neighbours Day events.	Ongoing
To design programmes that meet the needs of our communities, we regularly meet with a range of advisory groups (for example, the Youth Council, Older Persons' Council and Accessibility Advisory Committee)	Facilitator	In 2024, Council sought Youth Council feedback on climate change priorities for young people, supported the Enviro Youth Summit 2024, and ran workshops on climate education and waste minimisation.	Ongoing
We offer a range of grants to support initiatives aimed at building local community and not-for-profit social service agencies	Funder	Nine Kāpiti initiatives were selected as recipients of the 2022-25 Social Investment Fund, aimed at building safe and connected Kāpiti communities and lifting social sector capability.	Ongoing
		In 2024, Council provided funding to expand the provision of Enviroschools in additional Kāpiti schools, enabling more students to engage with climate and sustainability education.	Ongoing
Educating people in our district about emissions reductions and the projected impacts of climate change	Educator	Climate change is a high priority issue given considerable profile by our communications team. Council uses a range of channels (eg media releases, local newspapers and radio, Everything Kāpiti newsletter, social media, Antenna, our website) to communicate information about climate change issues. In 2025, Council is exploring further options to provide climate education, including through Enviroschools (see above) and/or other providers to reach wider audiences.	Ongoing
Understanding changes to our coastlines through citizen science	Facilitator/Educator	In 2023, funding was approved to install CoastSnap stations along the Kāpiti Coast. These create a "citizen science" approach to recording changes to our coastal environments, and also provide education opportunities. Three sites are proposed to be installed in 2025, with scope for more in future.	Planned
Reducing transport related emissions	Facilitator/Educator	In 2024, Council again partnered with Love2Ride to promote the Aotearoa Bike Challenge within Kāpiti. Over 3,000 trips were recorded in Kāpiti in 2024; promotion is underway for the Aotearoa Bike Challenge in 2025.	Ongoing
We facilitate the delivery of an extensive waste minimisation education programme in-region	Educator	See Table 2 for this update as waste minimisation is also important for emissions reduction.	Ongoing

Climate Emergency Actions, 1 January to 31 December 2024

**Table 6: Submissions**

Action	Council's role	Comment	Status
Submission to Ministry of Transport on the Draft Government Policy Statement on Land Transport 2024-34 (2 April 2024)	Advocate	<a href="#">Submission to Ministry of Transport on Draft Government Policy Statement on Land Transport 2024-34</a>	Complete
Submission to Environment Select Committee on the Fast-track Approvals Bill (22 April 2024)	Advocate	<a href="#">Submission to Environment Select Committee on Fast-track Approvals Bill</a>	Complete
Submission to Greater Wellington Regional Council on the GWRC Long-term Plan 2024-34 (22 April 2024)	Advocate	<a href="#">Submission to Greater Wellington Regional Council on the GWRC Long-term Plan 2024-34</a>	Complete
Submission to the Climate Change Commission on the Review of the 2050 emissions target, and Draft advice of the fourth emission budget period (2036-2040) (29 May 2024)	Advocate	<a href="#">Submission to the Climate Change Commission on the Review of the 2050 emissions target, and Draft advice of the fourth emission budget period (2036-2040)</a>	Complete
Submission to NZTA Waka Kotahi on Emergency Works Investment Policies (19 June 2024)	Advocate	<a href="#">Submission to NZTA Waka Kotahi on Emergency Works Investment Policies</a>	Complete
Submission to Greater Wellington Regional Council on the Regional Land Transport Plan 2021: 2024 Mid-Term Review (24 June 2024)	Advocate	<a href="#">Submission to Greater Wellington Regional Council on the Regional Land Transport Plan 2021: 2024 Mid-Term Review</a>	Complete
Submission to Ministry of Business, Innovation and Employment on Removing Barriers to Overseas Building Products (27 June 2024)	Advocate	<a href="#">Submission to Ministry of Business, Innovation and Employment on Removing Barriers to Overseas Building Products</a>	Complete
Submission to Ministry of Transport on the Land Transport Rule – Setting of Speed Limits 2024 (11 July 2024)	Advocate	<a href="#">Submission to Ministry of Transport on the Land Transport Rule – Setting of Speed Limits 2024</a>	Complete
Submission to Ministry of Business, Innovation and Employment on the “Making it easier to build granny flats” discussion document (12 August 2024)	Advocate	<a href="#">Submission to Ministry of Business, Innovation and Employment on the “Making it easier to build granny flats” discussion document</a>	Complete
Submission to Ministry for the Environment on the Second Emissions Reduction Plan (21 August 2024)	Advocate	<a href="#">Submission to the Ministry for the Environment on the Second Emissions Reduction Plan</a>	Complete

19

Climate Emergency Actions, 1 January to 31 December 2024

Action	Council's role	Comment	Status
Submission to Ministry of Transport on the Travel Demand in New Zealand 2050 Long-term Insights briefing topic (11 September 2024)	Advocate	<a href="#">Submission to Ministry of Transport on the Travel Demand in New Zealand 2050 Long-term Insights briefing topic</a>	Complete
Submission to NZTA on Ōtaki to North of Levin tolling (7 October 2024)	Advocate	<a href="#">Submission to NZTA on Ōtaki to North of Levin tolling</a>	Complete
Submission to Department of Internal Affairs on the Proposed Regulations for Natural Hazard Information in LIMs (28 October 2024)	Advocate	<a href="#">Submission to Department of Internal Affairs on the Proposed Regulations for Natural Hazard Information in LIMs (and attached table with further detail)</a>	Complete

**Table 7: Supporting climate resilience and recovery**

Action	Council's role	Comment	Status
Purchase of water tanks for community resilience	Asset owner	A business case has been submitted for water tanks to be purchased and installed across the district for emergency response.  Funding has been approved and developing project plan to install tanks at strategic locations within the district. These will serve as Community Emergency Water Stations. Awaiting quotes to determine exact number of tanks.	Underway
Roll out 'All-In' approach	Facilitator	In July 2024, Council adopted an 'all in' approach to emergency management to place greater focus and priority on our civil defence and emergency management responsibilities, and to ensure we are able to deliver our responsibilities in line with community and political expectations.  All Council staff (permanent and FTC with a minimum of 24-months left on their employment agreement) will be required to complete either an Emergency Management Foundation Course or Working in an Emergency Assistance Centre Course by Dec 2025 to build our organisational resilience and surge capacity in the event of an emergency event.	Underway
Develop a Kāpiti Recovery Plan	Facilitator	Planning will commence in 2024/25 for the development of a districtwide recovery plan that will provide guidance following significant disruptive events. This is outside the emergency response function.	Planned

Climate Emergency Actions, 1 January to 31 December 2024

**Table 8: Supporting the environment**

Action	Council's role	Comment	Status
<b>Environmental protection</b>			
Battery recycling trial	Facilitator	The battery recycling pilot at Paraparaumu Library has been extended and expanded to Ōtaki and Waikanae libraries. More information about the pilot and types of batteries accepted: <a href="#">Battery recycling trial - Kāpiti Coast District Council</a>	Ongoing
Tyrewise regulated product stewardship scheme	Facilitator	See Table 2 above.	Ongoing
Participate in the development of Integrated Catchment Management Plans through Greater Wellington Regional Council's Whaitua process	Facilitator	Councillor Jocelyn Prvanov is the Council representative to the Whaitua Kāpiti Committee. The GWRC have accepted the Whaitua Implementation Plan and are currently considering implementation priorities. Initial conversations with Greater Wellington for the development of an integrated catchment management plan, with initial focus on Ōtaki catchments.	Underway
We have ongoing mitigation plans guiding the delivery of the River Recharge Scheme until 2030	Asset owner	Wetland condition monitoring will commence in early-2025 as part of ongoing monitoring.	Ongoing
We are currently renewing some of our water supply consents, such as the one for water abstraction	Asset owner	The resource consent application for the bores and operational discharge is combined and has been submitted to GWRC. This application is being processed following mana whenua and landowner approvals (WGN240089). A Cultural Impact Assessment (CIA) has been provided by Nga Hapu o Ōtaki for these activities.	Underway
We are renewing our discharge consents for the Paraparaumu Wastewater Treatment Plant as they expired in March 2022. The application is accompanied by an assessment of environmental effects and improvement plans	Asset owner	The resource consent application was submitted to GWRC in December 2021 for a 15-year consent. GWRC has notified for the public hearing and Council is now working towards the hearing process. The 15-year consent is exploring a BPO (best practical option) sustainable solution for the Paraparaumu WWTP, in partnership with mana whenua.	Underway
The new 20-year resource consent for the Ōtaki Wastewater Treatment Plant was issued by GWRC in October 2016. In accordance with the consent, we worked with iwi to prepare and implement an environmental protection and restoration plan	Asset owner	To meet iwi aspirations, the first stage of manuka tree planting along the downstream of the Land Disposal Treatment Area (LDTA) areas has been completed. Planting in and around the LDTA will commence after the upgrade of the laterals and discharge systems, and discharge treatment area which is subject to the grant of resource consent.	Underway
The 2019 Trade Waste Bylaw is the main instrument to manage commercial and industrial wastewater discharges to minimise risks to humans and the environment	Regulator	Tradewaste bylaw is being planned to integrate with Wastewater bylaw in 2025-26.	Planned
Our environmental monitoring programme (which includes a large cultural monitoring component)	Asset owner	We recently submitted a leachate management plan to GWRC for the old landfill site in Otaihanga, which includes a wetland restoration project. Part of the wetland restoration project may be achieved by capping the old-decommissioned-sludge-	Ongoing

Climate Emergency Actions, 1 January to 31 December 2024

Action	Council's role	Comment	Status
designed with our iwi partners) measures environmental health and informs activity plans		beds at the north and north-eastern corner of the site, using the excavated material from the Paraparaumu Wastewater Treatment Plant (WWTP) pond upgrade work. Flow monitoring of the downstream channel of the leachate discharge point is being worked out. Treatment of leachate before pumping to Paraparaumu WWTP is underway.  Investigation and monitoring of the dissolved reactive phosphorus (DRP) hike in the downstream of the Land Discharge Treatment Area (LDTA) at Ōtaki WWTP is complete. Lining of the aeration pond, renewal of LDTA laterals and upgrade of discharge through sprinkler system in addition to the replenishment of the discharge bed is underway to manage the DRP and achieve environmental outcomes.	
<b>Environmental restoration</b>			
Our Parks and Open Spaces team has an extensive programme working with Greater Wellington Regional Council and volunteer groups to carry out planting across the district	Asset owner	Approx 19,000 native plants were planted by Council staff and volunteers in the last 6 months. Additional planting takes place with most of our stormwater projects as it is usually required as part of the resource consents, as well as supporting private landowner initiatives through the Riparian Fund and the Heritage Fund.	Complete
The Parks and Open Spaces team provides advice to promote biodiversity, environmental protection, and environmental restoration in the district	Educator	Council provides ongoing labour and technical support for ~30 community conservation groups.	Ongoing
The Parks and Open Spaces team works with Greater Wellington Regional Council to support pest control in the district	Asset owner	GWRC is contracted to provide animal pest and ecological weed control services throughout Council owned Key Native Ecosystem sites. We also contract GWRC for additional rabbit control through the other parks and reserves that are not covered by this programme.	Ongoing
Material use for ecological restoration plantings are sustainable	Asset owner	Use of cardboard surrounds and wool/coconut weed suppressors are being used along with bamboo stakes (except in areas where this is unfeasible). This reduces the need to come back to site as well as reduces plastic in the environment.	Ongoing
There are a range of planting projects in the Three Waters activities. These projects benefit carbon sequestration and environmental restoration.	Asset owner	In addition to the tree planting at the Waikanae Dam (see Table 1), Council is undertaking pest and weed control on 18 hectares of recently harvested pine trees at the site where there is now strong native plant regrowth. Council is also undertaking pest and weed control at the 8 hectares of recently harvested pine and gum trees at the Waikanae WTP, where there is also strong native plant regrowth.  To meet iwi aspirations, some manuka planting has already occurred downstream of the Ōtaki WWTP's Land Disposal Treatment Area (LDTA), and more is planned for later this year. Additional riparian planting is scheduled, pending guidance and approval from mana whenua partners.	Ongoing

## 8.5 COMMUNITY SUSTAINABILITY OUTREACH 2025 - GREENER NEIGHBOURHOOD PROGRAMME UPDATE

Kaituhi | Author: **Rob Dunn, Sustainability Advisor Communities**

Kaiwhakamana | Authoriser: **Brendan Owens, Group Manager Customer and Community**

### TE PŪTAKE | PURPOSE

- 1 In November 2024 the Climate Action and Connected Communities team presented a draft of proposed climate change education and outreach programmes for both Kāpiti communities and Council staff to the Climate and Environment Committee for comment.
- 2 The purpose of this report is to provide an update on the progress of these education and outreach programmes, and in particular the new Greener Neighbourhoods programme.
- 3 Climate and Environment Committee members may have questions or comments about the Greener Neighbourhoods programme, or about some of the other education and outreach programmes.

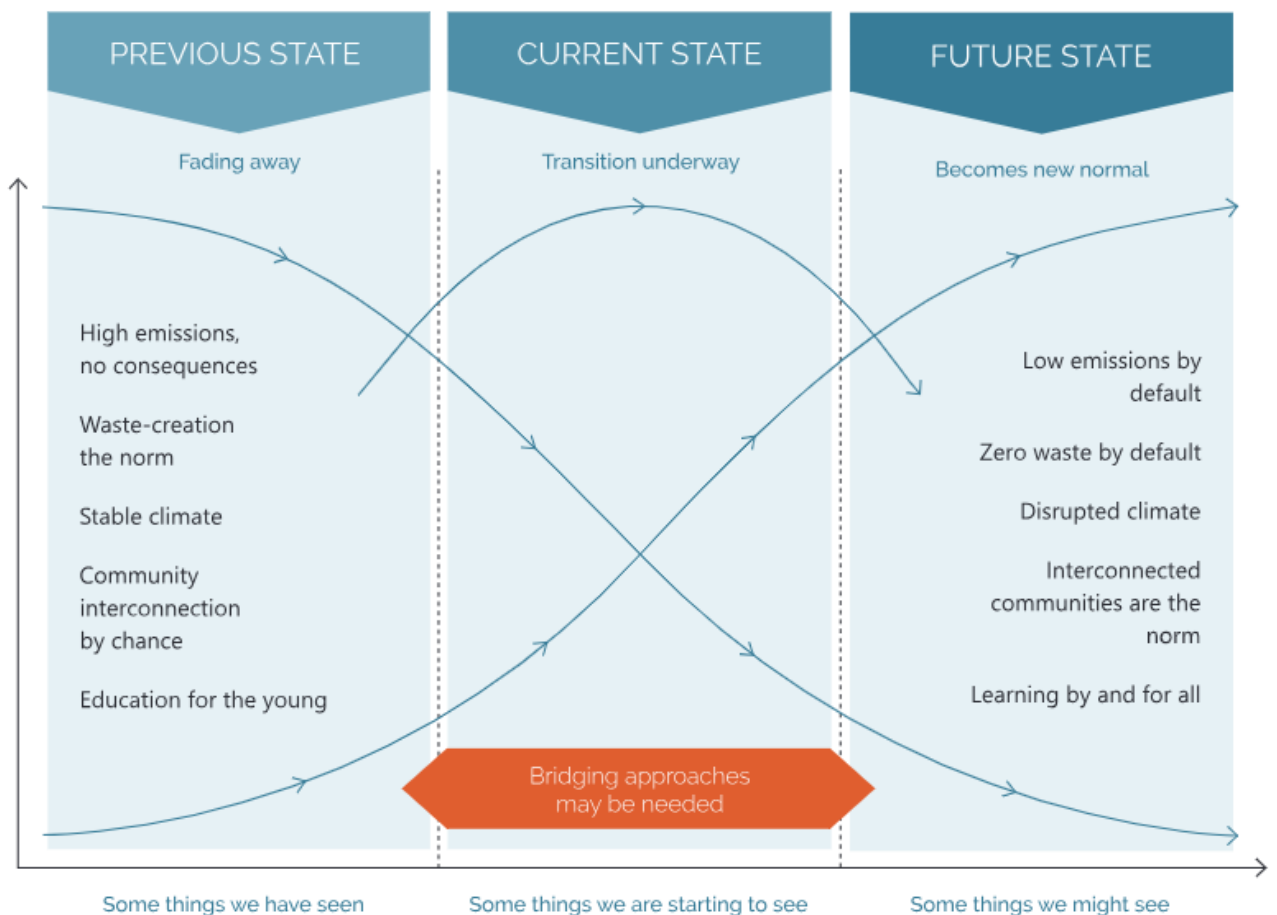
### TAUNAKITANGA | RECOMMENDATIONS

- A. That the Climate and Environment Committee note this report.
- B. That the Climate and Environment Committee provide further direction towards the development and delivery of the Greener Neighbourhoods programme, or other education and outreach programmes, as appropriate.

### TŪĀPAPA | BACKGROUND

- 4 The need to rapidly reduce carbon emissions and overall resource consumption, protect and restore natural ecosystems, and ensure a just transition to a low carbon future has been well established over the last decade by multiple scientific bodies and authors.
- 5 Local government has a key role to play in this transition. One example of the role local government might play in this process is provided by the Taituara report *Navigating Critical 21<sup>st</sup> Century transitions* (2021). The key concepts from this report are summarised in the graphic below.

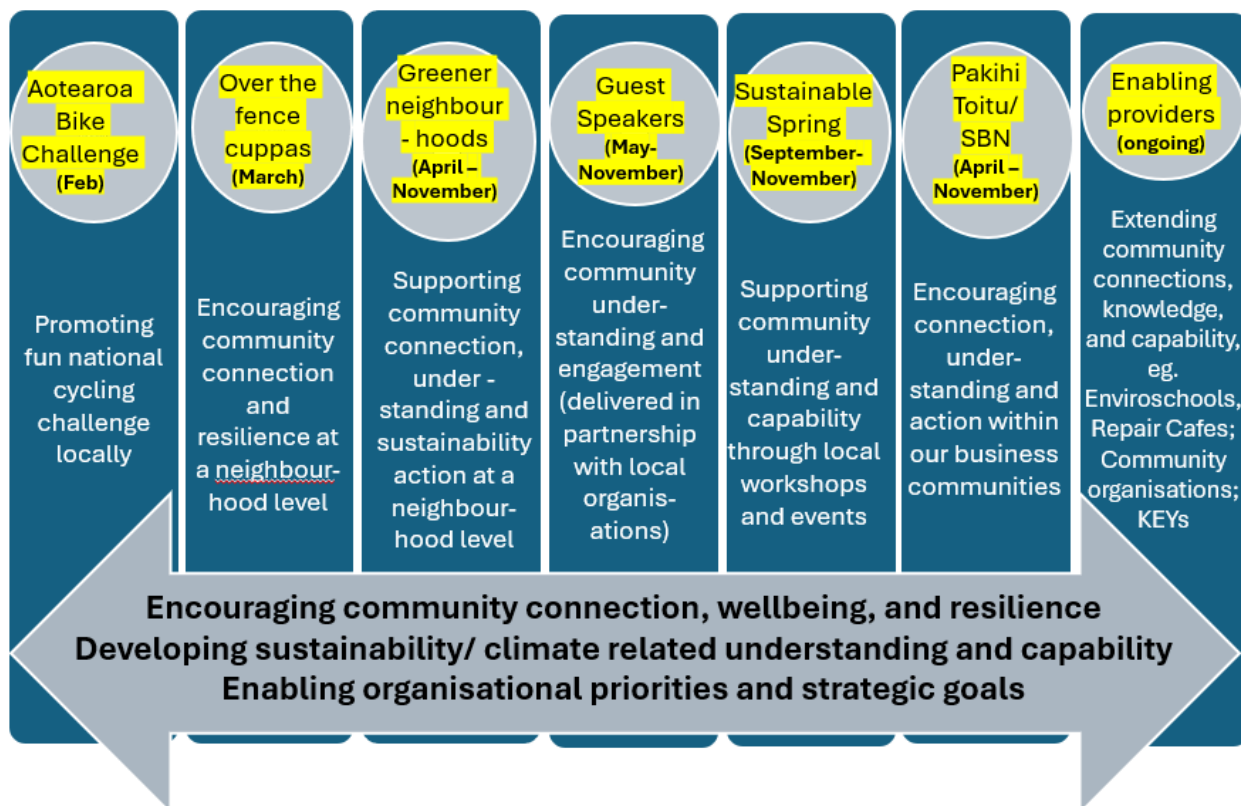
Fig 3 Using the Three Horizons framework for navigating 'era-scale' change



*Taituarā – Navigating Critical 21<sup>st</sup> Century Transitions (2021)*

- 7 Council and Kāpiti communities place significant priority on community connection and wellbeing, local environment, and climate action, as reflected through Toitū Kāpiti, Councils' top 10 priorities, and important strategic approaches such as the Climate Emergency Action Framework and the draft Climate Mitigation Sub-Strategy.
- 8 In 2023, Council set an aspirational, district wide net-zero emissions target for 2040. Achieving this goal is in part dependent on cooperation and collaboration with our communities.
- 9 To help enable community and Council priorities, and in response to feedback from the Climate and Environment Committee in November 2024, the Climate Action and Connected Communities team have further developed the 2025 climate change education and outreach plan. A summary of this updated plan is presented below.

## 2025 Kāpiti Community Sustainability and Climate Change Outreach/ Education Overview



- 10 This report provides further information on the Greener Neighbourhoods programme, which is a new programme in 2025 (although Council previously ran this programme some years ago).
- 11 The purpose of the Greener Neighbourhoods programme is to encourage community connection and resilience and empower community groups to take positive environmental and climate action through partnership, education and collaboration.
- 12 Council previously ran a Greener Neighbourhoods programme from 2010- 2019; feedback from previous participants suggests that the programme successfully enabled long-term community relationship building and a range of positive and ongoing environmental outcomes. An example of this is the Predator Free Paekākāriki programme, which grew from the “Paekākāriki Rat Pack”, a project started in 2011 as part of Councils’ Greener Neighbourhoods programme, and one of the first backyard trapping groups anywhere in New Zealand.
- 13 **How does the Greener Neighbourhoods programme work?**
- Groups of 5 or more households from a neighbourhood sign up to participate (households need to get themselves together in groups before signing up). Households within each group should be within easy walking distance of each other
  - The main focus of the programme is a group project with an environmental/ climate focus which neighbourhood groups collaborate on throughout the year. Council supports groups to select suitable projects, and provides advice/ support and some limited funding during project development and implementation.
  - Examples of previous projects from Greener Neighbourhoods participants include community gardening, water and energy conservation, local pest control and restoration work, and waste minimisation.

- In addition, groups are offered access to a range of free educational workshops and learning resources, for example WREMO neighbourhood resilience workshops and climate education opportunities.
- Greener Neighbourhood groups can also attend/ participate in Councils' Guest Speaker programme, and the Sustainable Spring programme
- Groups are also connected with relevant local organisations/ community groups working in their area
- Groups send project updates and photos to Council for an ongoing blog celebrating group progress
- All neighbourhood groups come together for an end of project celebration

#### 14 Timing and getting involved

- The Greener Neighbourhoods programme runs from late April through to November.
- Groups of 5 or more households sign up to participate.
- Council will start promoting the Greener Neighbourhoods programme once the Over the Fence Cuppas programme has started.
- Spaces are limited; the Climate Action and Connected Communities Team will work with 4-5 different Neighbourhood groups in 2025. Where possible the Greener Neighbourhoods programme will prioritise working with neighbourhood groups from across the Kāpiti district, rather than several neighbourhood groups from the same suburb or town.
- A post project review will explore opportunities for improvement and any larger scale roll out.

### HE TAKE | ISSUES

- 15 Climate change remains a controversial topic with some members of our communities. The approach of the 2025 education and outreach programmes is to work with our community partners to provide positive learning and engagement opportunities for our communities while minimising associated risks.

### NGĀ KŌWHIRINGA | OPTIONS

- 16 The Climate and Environment Committee may have advice regarding the Greener Neighbourhoods programme, or other programmes planned as part of the 2025 Sustainability and Climate Change Outreach/ Education overview presented above.

### NGĀ MAHI PANUKU | NEXT STEPS

- 17 Council officers will incorporate any feedback from the Climate and Environment Committee into further development of these outreach and education programmes. Progress updates can be provided to the Climate and Environment Committee as necessary.

### NGĀ ĀPITI HANGA | ATTACHMENTS

Nil

## 9 TE WHAKAŪ I NGĀ ĀMIKI | CONFIRMATION OF MINUTES

### 9.1 CONFIRMATION OF MINUTES

**Author:** Maria Cameron, Advisor Governance

**Authoriser:** Rach Wells, Group Manager People and Capability

#### TAUNAKITANGA | RECOMMENDATIONS

That the minutes of the Climate and Environment Committee meeting of 7 November 2024 be accepted as a true and correct record.

#### NGĀ ĀPITIHINGA | ATTACHMENTS

1. Unconfirmed Minutes of the Climate and Environment Committee Meeting of 7 November 2024 [↓](#)

## CLIMATE AND ENVIRONMENT COMMITTEE MEETING MINUTES

7 NOVEMBER 2024

**MINUTES OF THE KĀPITI COAST DISTRICT COUNCIL  
CLIMATE AND ENVIRONMENT COMMITTEE MEETING  
HELD IN THE COUNCIL CHAMBER, GROUND FLOOR, 175 RIMU ROAD, PARAPARAUMU  
ON THURSDAY, 7 NOVEMBER 2024 AT 9.32AM**

**PRESENT:** Cr Jocelyn Prvanov (Chair), Cr Liz Koh, Cr Shelly Warwick, Ms Kim Tahiwī, Mr Christian Judge, Mr Glen Olsen, Mr Tim Sutton, Mr Simon Black  
**Via Zoom:** Cr Glen Cooper, Cr Sophie Handford, Mr Michael Moore

**IN ATTENDANCE:** Deputy Mayor Lawrence Kirby, Cr Martin Halliday, Cr Rob Kofoed, Mr Brendan Owens, Mr Sean Mallon, Ms Steffi Haefeli, Ms Monique Engelen, Ms Anna Smith, Ms Maria Cameron, Mr Evan Dubisky

**WHAKAPĀHA | APOLOGIES:** Mayor Janet Holborow

**LEAVE OF ABSENCE:** Nil

**1 NAU MAI | WELCOME**

The Chair welcomed everyone to the meeting.

**2 KARAKIA A TE KAUNIHERA | COUNCIL BLESSING**

Kim Tahiwī read the Council blessing.

**3 WHAKAPĀHA | APOLOGIES**

**APOLOGY**

**COMMITTEE RESOLUTION CEC2024/23**

Moved: Cr Jocelyn Prvanov

Seconder: Cr Liz Koh

That the apology received from Mayor Janet Holborow be accepted.

**CARRIED**

**4 TE TAUĀKĪ O TE WHAITAKE KI NGĀ MEA O TE RĀRANGI TAKE |  
DECLARATIONS OF INTEREST RELATING TO ITEMS ON THE AGENDA**

No declarations of interest were made in relation to items on the agenda.

## CLIMATE AND ENVIRONMENT COMMITTEE MEETING MINUTES

7 NOVEMBER 2024

**5 HE WĀ KŌRERO KI TE MAREA MŌ NGĀ MEA E HĀNGAI ANA KI TE RĀRANGI TAKE | PUBLIC SPEAKING TIME FOR ITEMS RELATING TO THE AGENDA**

No members of the public were present who wished to speak.

**6 NGĀ TEPUTEIHANA | DEPUTATIONS**

No deputations were received at this meeting.

**7 NGĀ TAKE A NGĀ MEMA | MEMBERS' BUSINESS**

- (a) No leaves of absence were requested.
- (b) The Chair had not been advised of any matters of an urgent nature prior to the commencement of the meeting.

**8 HE KŌRERO HOU | UPDATES****8.1 UPDATE ON WAIKANAE KI UTA KI TAI**

Andy MacKay, Team Leader Environment & Ecological Services, introduced the report, asked that it be taken as read and answered members' questions.

**COMMITTEE RESOLUTION CEC2024/24**

Moved: Cr Jocelyn Prvanov  
Seconder: Cr Liz Koh

- A. That the Climate and Environment Committee note the update provided.

**CARRIED****8.2 WASTE UPDATES: LITTER INTELLIGENCE & THE OTAIHANGA ZERO WASTE HUB**

Robbie Stillwell, Waste Projects Manager and David Binstead, Senior Advisor Waste Minimisation, introduced the report, asked that it be taken as read and answered members' questions.

**COMMITTEE RESOLUTION CEC2024/25**

Moved: Cr Jocelyn Prvanov  
Seconder: Mr Simon Black

That the Climate and Environment Committee:

- A. **Note** the update provided.

**CARRIED**

## CLIMATE AND ENVIRONMENT COMMITTEE MEETING MINUTES

7 NOVEMBER 2024

**8.3 ESTIMATED GHG EMISSIONS FROM STAFF COMMUTING AND WORKING FROM HOME**

Matthew Nabney, Advisor Sustainability, and Jamie Young-Drew, Principal Policy Advisor Climate Change, introduced the report, asked that it be taken as read and answered members' questions.

**COMMITTEE RESOLUTION CEC2024/26**

Moved: Cr Jocelyn Prvanov

Seconder: Mr Simon Black

That the Climate and Environment Committee:

- A. **Note** that the Climate Action and Connected Communities Team undertook a staff commuting and working from home survey in June 2024.
- B. **Note** that the results from the survey are used to estimate the GHG emissions produced by staff commuting and working from home habits.
- C. **Note** that the estimated GHG emissions produced by staff commuting and working from home are 375tCO<sub>2</sub>-e which is 10% of Council's current GHG emissions footprint.
- D. **Note** that Council will be required to set a target for these emissions by the end of 2025.

**CARRIED**

**8.4 SUSTAINABLE SEPTEMBER PROGRAMME REPORT**

Rob Dunn, Sustainability Advisor Communities and Jamie Young-Drew, Principal Policy Advisor Climate Change, introduced the report, asked that it be taken as read and answered members' questions.

**COMMITTEE RESOLUTION CEC2024/27**

Moved: Cr Jocelyn Prvanov

Seconder: Cr Liz Koh

- A. That the Climate and Environment Committee **note** this report.
- B. That the Climate and Environment Committee **provide direction** towards the 2025 programme as appropriate.

**CARRIED**

**TABLED DOCUMENTS**

The following documents were tabled.

**Appendices**

- 1 CEC 2024 11 07 Update on Community Sustainability & Climate Education Outreach Initiatives - applies to Items 8.4, 8.5 & 8.6

## CLIMATE AND ENVIRONMENT COMMITTEE MEETING MINUTES

7 NOVEMBER 2024

**8.5 2025 KĀPITI CLIMATE CHANGE EDUCATION & OUTREACH OVERVIEW**

Rob Dunn, Sustainability Advisor Communities and Jamie Young-Drew, Principal Policy Advisor Climate Change, introduced the report, asked that it be taken as read and answered members' questions.

**COMMITTEE RESOLUTION CEC2024/28**

Moved: Cr Jocelyn Prvanov

Seconder: Cr Shelly Warwick

- A. That the Climate and Environment Committee **note** this report.
- B. That the Climate and Environment Committee **provide direction** towards the development and delivery of these proposed programmes as appropriate.

**CARRIED****8.6 2023 CLIMATE ACTION GRANTS: IMPACT AND ACCOUNTABILITY REPORTING**

Rob Dunn, Sustainability Advisor Communities and Jamie Young-Drew, Principal Policy Advisor Climate Change, introduced the report, asked that it be taken as read and answered members' questions.

**COMMITTEE RESOLUTION CEC2024/29**

Moved: Cr Jocelyn Prvanov

Seconder: Mr Christian Judge

- A. That the Climate and Environment Committee **note** this report.
- B. That the Climate and Environment Committee continue to **explore** any funding opportunities that may enable the Climate Action Grants to be offered in the future.

**CARRIED**

Ms Kim Tahiwī left the meeting at 1:20 pm and did not return.

**8.7 UPDATE ON THE KĀPITI COAST TRAILS TRUST**

Cat Wylde, Advisor Recreational Tracks & Trails, Janice Hill and Bruce Henderson, Founding Trustees for the Kapiti Trails Trust, introduced the report, asked that it be taken as read and answered members' questions.

**COMMITTEE RESOLUTION CEC2024/30**

Moved: Cr Jocelyn Prvanov

Seconder: Cr Shelly Warwick

- A. That the Climate and Environment Committee **notes** this report.
- B. That the Climate and Environment Committee **notes** that a Governance structure for the independent Trails Trust has been set up and has had their first meeting.
- C. That the Climate and Environment Committee **receives** the verbal update from the Trust representative Janice Hill on the Trust establishment and the progress to date on the Paekākāriki to Pāuatahanui trail.
- D. That the Climate and Environment Committee **supports** the Paekākāriki to Pāuatahanui trail concept as presented by the Kapiti Coast Trails Trust on 7 November 2024 and will

Page 4

**CLIMATE AND ENVIRONMENT COMMITTEE MEETING MINUTES****7 NOVEMBER 2024**

provide a letter of support for the trust to progress the Paekākāriki to Pāuatahanui trail.

- E. That the Climate and Environment Committee **requests** that a letter of support is provided by the Chief Executive and Mayor in order for the Trust to progress the Paekākāriki to Pāuatahanui trail.

**CARRIED**

Mr Glen Olsen left the meeting at 1:20 pm and did not return.

**9 TE WHAKAŪ I NGĀ ĀMIKI | CONFIRMATION OF MINUTES****9.1 CONFIRMATION OF MINUTES****COMMITTEE RESOLUTION CEC2024/31**

Moved: Cr Shelly Warwick

Seconder: Mr Simon Black

- A. That the minutes of the Climate and Environment Subcommittee meeting of 20 August 2024 be accepted as a true and correct record.

**CARRIED**

Mr Tim Sutton left the meeting at 1:23 pm and did not return.

**10 CLOSING KARAKIA**

The Chair closed the meeting with karakia.

**The Te Komiti Āhuarangi me te Taiao | Climate and Environment Committee meeting closed at 1.24pm**

.....  
**HEAMANA | CHAIRPERSON**

**10 KARAKIA WHAKAMUTUNGA | CLOSING KARAKIA**

Kia tau ngā manaakitanga ki runga i a  
tātou katoa,

*May blessings be upon us all,*

Kia hua ai te mākihikihi, e kī ana

*And our business be successful.*

Kia toi te kupu

*So that our words endure,*

Kia toi te reo

*And our language endures,*

Kia toi te wairua

*May the spirit be strong,*

Kia tau te mauri

*May mauri be settled and in balance,*

Ki roto i a mātou mahi katoa i tēnei rā

*Among the activities we will do today*

Haumi e! Hui e! Taiki e!

*Join, gather, and unite! Forward together!*